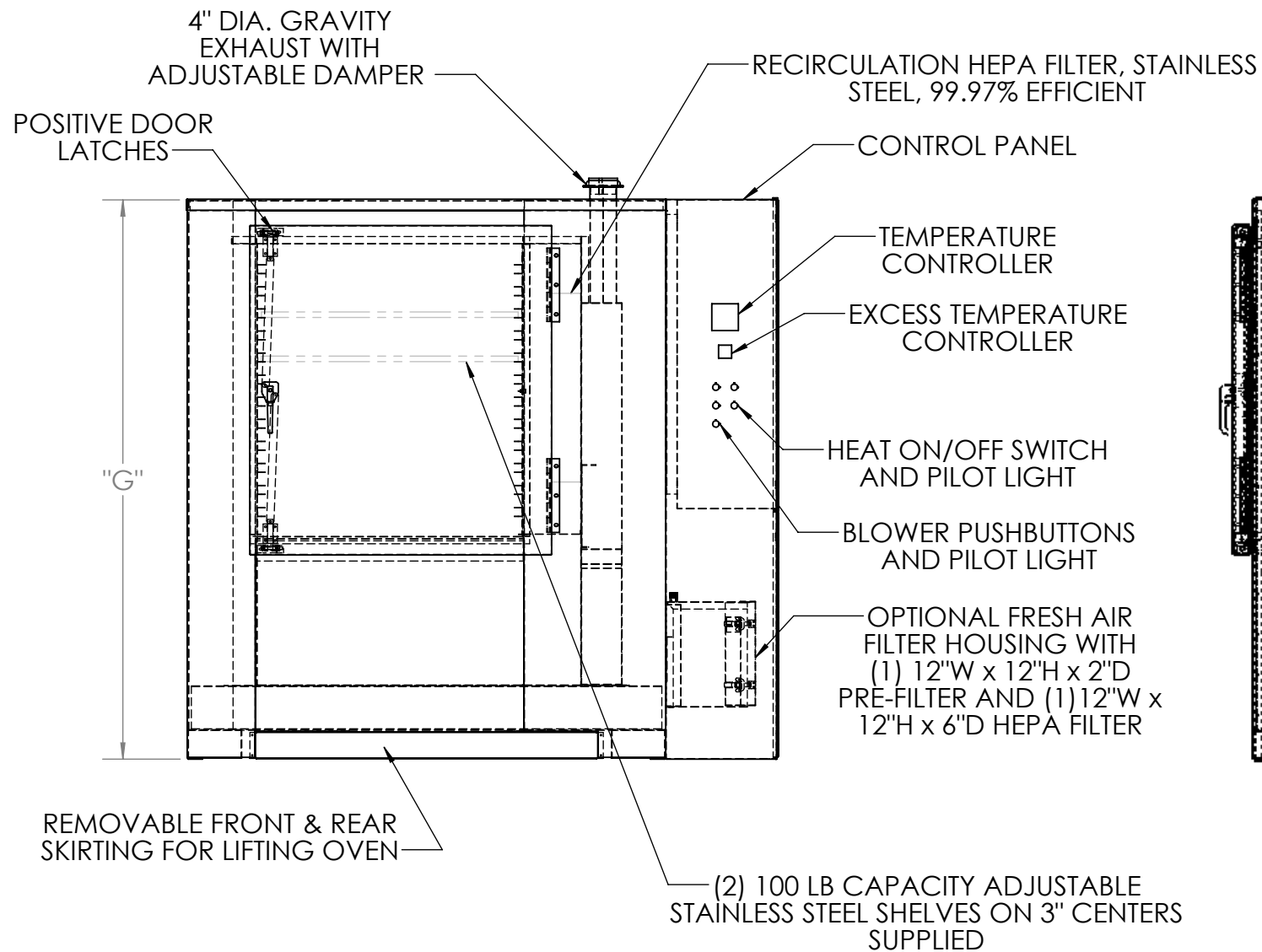


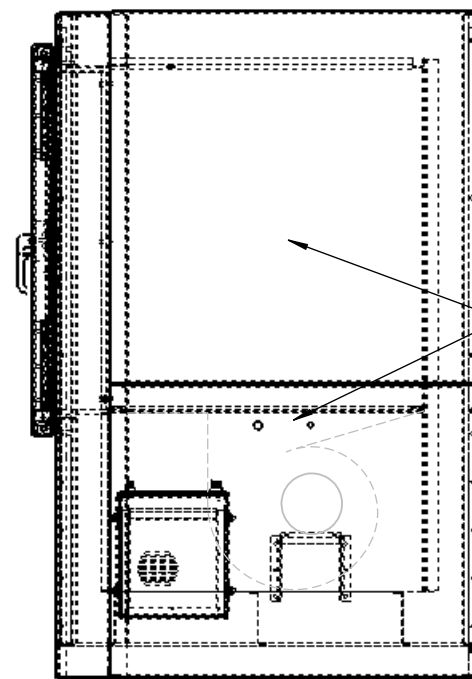
MODEL	WORK SPACE (W x D x H)	KW	VOLUME CU. FT.	CFM	MOTOR H. P.	INSULATION THICKNESS	HEPA FILTER (W x D x H)	"A"	"B"	"C"	"D"	"E"	"F"	"G"
CLA-500	24" x 24" x 15"	8	5	250	1/2	6"	12" x 6" x 12"	51"	15"	66"	36"	4"	40"	52"
CLB-500	24" x 36" x 27"	10	13.5	600	3/4	6"	24" x 6" x 24"	51"	15"	66"	48"	4"	52"	64"
CLC-500	36" x 36" x 27"	15	20.3	750	1	6"	30" x 6" x 24"	65"	15"	80"	48"	4"	52"	64"
CLD-500	36" x 36" x 39"	20	29.3	1000	1 1/2	6"	30" x 6" x 24"	65"	15"	80"	48"	4"	52"	76"
CLE-500	36" x 36" x 51"	30	38.3	1500	2	6"	30" x 6" x 24"	65"	15"	80"	48"	4"	52"	88"

3/4" NPT D.O.P. PORT



NOTES;

- 1 STANDARD ELECTRICAL SERVICE; 208/3/60, 230/3/60, 460/3/60
- 2 AIR FLOW; HORIZONTAL, RIGHT TO LEFT
- 3 INTERIOR; 304 STAINLESS STEEL, WITH CONTINUOUSLY BACK WELDED SEAMS
- 4 EXTERIOR; CONTROL PANEL FACE AND FRONT DOOR FACE, #4 BRUSHED STAINLESS STEEL, REMAINDER OF OVEN ALUMINIZED STEEL, PAINTED WITH WHITE EPOXY PAINT



REV.	DESCRIPTION	BY	DATE
DESCRIPTION			
CUSTOMER			
MODEL		CLA-500, CLB-500, CLC-500 CLD-500, CLE-500 CLEAN ROOM OVENS	
SHOP ORDER			
DRAWN BY		JC	
DATE		4/14/2014	
PRINT DATE		5/7/2014	
DWG. NO.			CLA-500 CLE-500

This drawing is the property of THE GRIEVE CORPORATION, and may not be used or reproduced without the express permission of THE GRIEVE CORPORATION