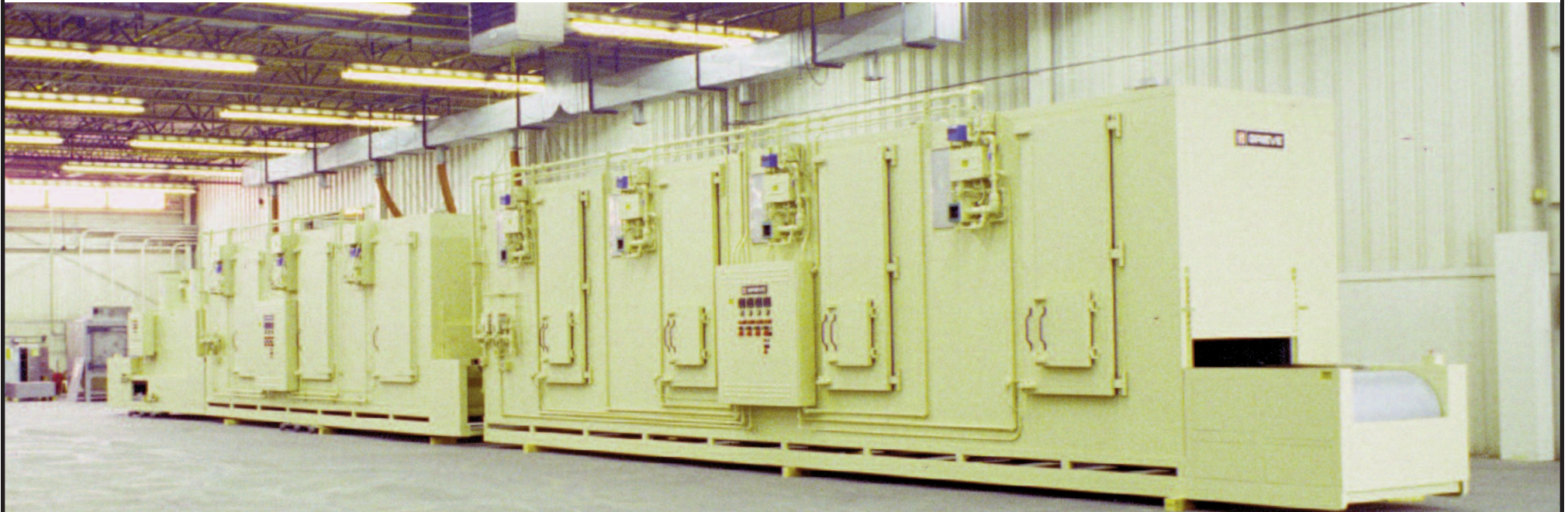


SEVEN (7) ZONE BELT CONVEYOR OVEN, Serial No. 650178

for use in curing coating on ceramic parts

- maximum operating temperature: Zones 1-4: 350°F; Zones 5-7: 1000°F
- work space dimensions: 51" wide x 56' deep x 15" high
- 30" long open belt loading zone
- four (4) 3' long insulated heat zones with independent recirculated airflow and temperature control (350°F)
- 30" long open zone
- three (3) 3' long insulated heat zones with independent recirculated airflow and temperature control (1000°F)
- 9' long cooling zone
- 3' long open unloading zone
- 400,000 BTU/HR installed in a modulating natural gas burner in each of Zones 1 to 4
- 500,000 BTU/HR installed in a modulating natural gas burner in each of Zones 5 to 7
- 1/2" wide, B36-20-12-14, 316 stainless steel balanced weave conveyor belt with 1-HP motor drive, variable from 1.5 to 30 inches per minute

- 30,000 CFM, 30-HP recirculating blower providing vertical upward airflow in Zones 1 to 4
- 25,000 CFM, 20-HP recirculating blower providing vertical upward airflow in Zone 5
- 12,500 CFM, 10-HP recirculating blower providing vertical upward airflow in Zones 6 and 7
- two (2) 36" diameter tubeaxial fans each driven by a 5-HP motor to push/pull air through cooling zone
- 4" insulated walls in Zones 1 to 4
- 8" thick insulated walls comprised of 2" of 1900°F block and 6" of 10 lb/cf density rockwool in Zones 5 to 7
- top mounted heat chambers
- split into two (2) sections for shipment
- aluminized steel exterior
- Type 316L, 2B finish stainless steel interior continuously welded seams
- doors for access to workspace and heat chamber
- safety equipment required by IRI, FM and National Fire Protection Association Standard 86 for gas-heated equipment
- digital indicating temperature controllers



THE GRIEVE CORPORATION

500 Hart Road, Round Lake, Illinois 60073-2898 USA
(847) 546-8225 Fax: (847) 546-9210

No. 919