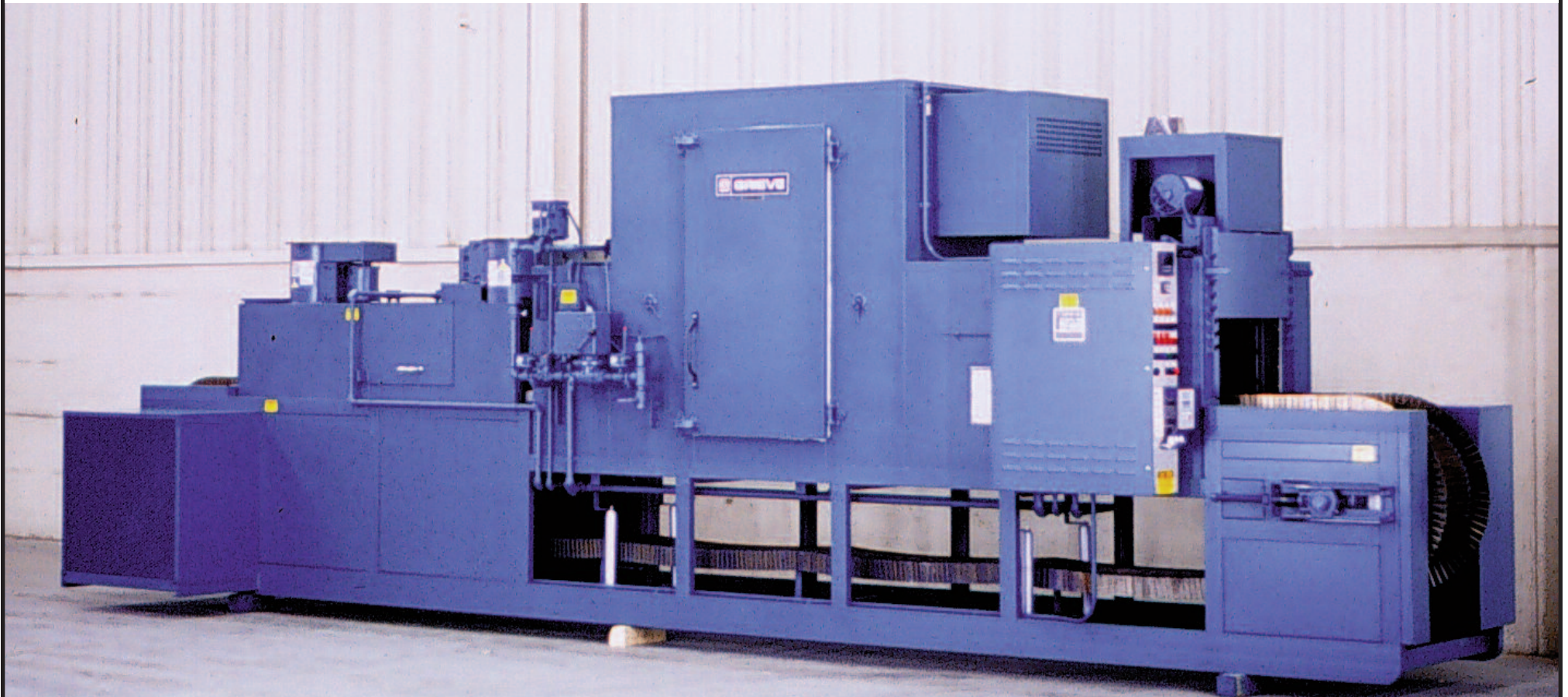


**BELT CONVEYOR OVEN, Serial No. 650156**

for drying brass and aluminum parts

- maximum operating temperature: 500°F
- workspace dimensions: 22" wide x 10' 6" deep x 15" high
- 1<sup>1</sup>/<sub>2</sub>' long open belt loading zone
- 10<sup>1</sup>/<sub>2</sub>' long insulated heat zone with recirculated airflow
- <sup>1</sup>/<sub>2</sub>' long open zone
- 6' long cooling zone
- 1' long open unloading zone
- 350,000 BTU/HR installed in a modulating natural gas burner

- 16" wide, B36-24-14 conveyor belt with 3" high flex plate edges
- <sup>1</sup>/<sub>3</sub> HP motor drive, variable from 1.3 to 26 feet per minute
- 3000 CFM, 2 HP recirculating blower providing vertical downward airflow
- 4" insulated walls
- aluminized steel interior and exterior
- safety equipment required by IRI, FM and National Fire Protection Association Standard 86 for gas-heated equipment including 325 CFM <sup>1</sup>/<sub>3</sub> HP powered forced exhauster
- two (2) 12" diameter tubeaxial fans each driven by a <sup>1</sup>/<sub>2</sub> HP motor to push/pull air through cooling zone



**THE GRIEVE CORPORATION**

500 Hart Road, Round Lake, Illinois 60073-2898 USA  
(847) 546-8225 Fax: (847) 546-9210

**No.876**