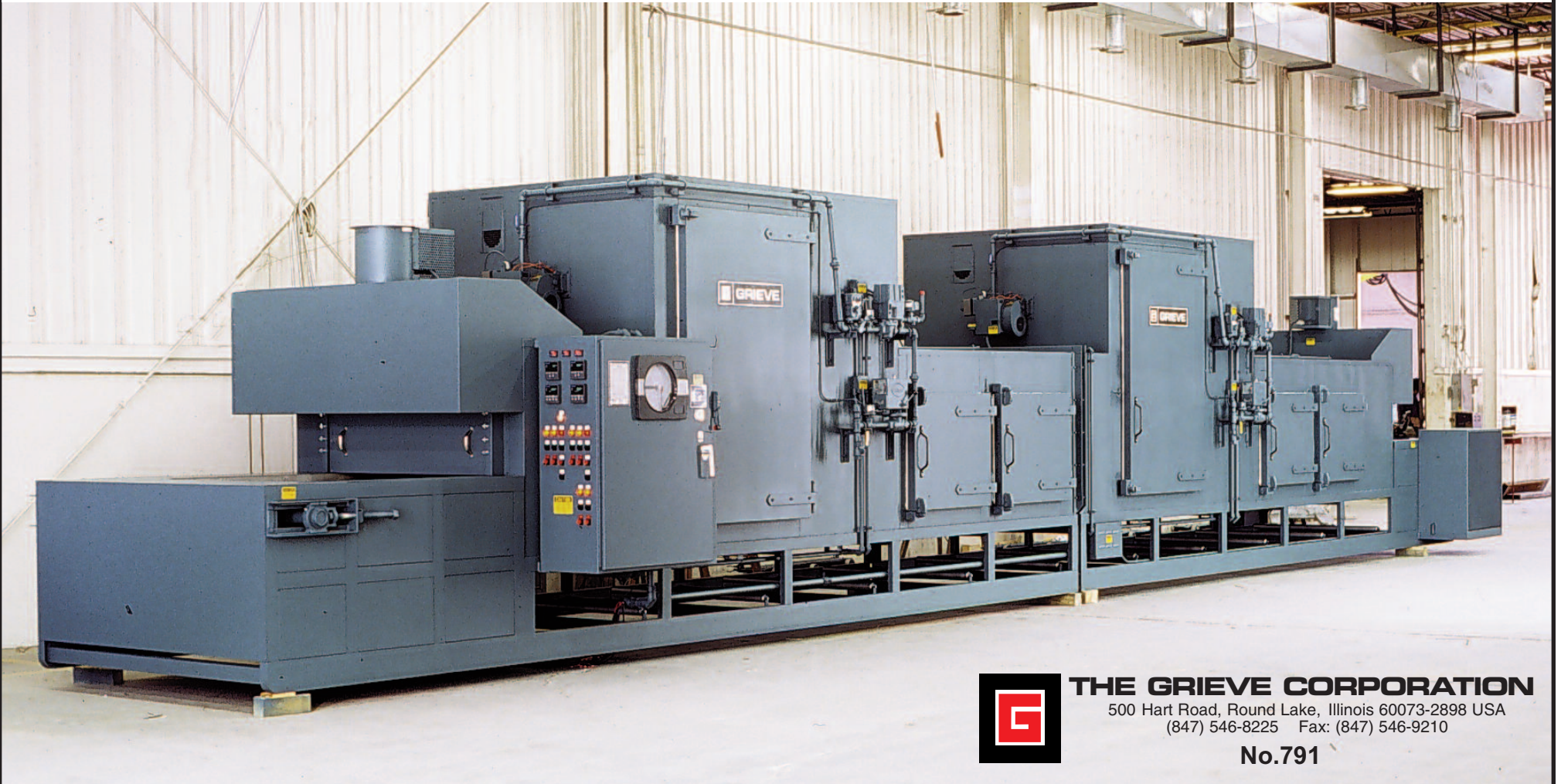


TWO (2) ZONE GAS HEATED BELT CONVEYOR OVEN, Serial No. 650112
for stress relieving springs

- maximum operating temperature: 850°F
- workspace dimensions: 48" wide x 360" long x 15" high
- 4' long open belt loading zone
- 2' long insulated, unheated entrance vestibule
- two (2) 15' long insulated heat zones with independent recirculated airflow and temperature control
- 2' long insulated, unheated exit vestibule
- 3¹/₂' long open unloading zone

- 1,600,000 BTU/HR installed in two modulating natural gas burners
- 42" wide, 1" x 1/2" flatwire conveyor belt with 1/3 HP motor, drive variable from 5.8 to 16.1 inches per minute
- two (2) 10,000 CFM, 7¹/₂ HP recirculating blowers providing vertical downward airflow
- 7" insulated walls
- Type 304, 2B finish stainless steel interior
- safety equipment required by IRI, FM and National Fire Protection Association Standard 86 for gas heated equipment
- two (2) pen, 10" diameter circular chart recorder
- exhaust hood over each end equipped with 12" dia. tubeaxial fan driven by a 1/2 HP motor



THE GRIEVE CORPORATION

500 Hart Road, Round Lake, Illinois 60073-2898 USA
(847) 546-8225 Fax: (847) 546-9210

No.791