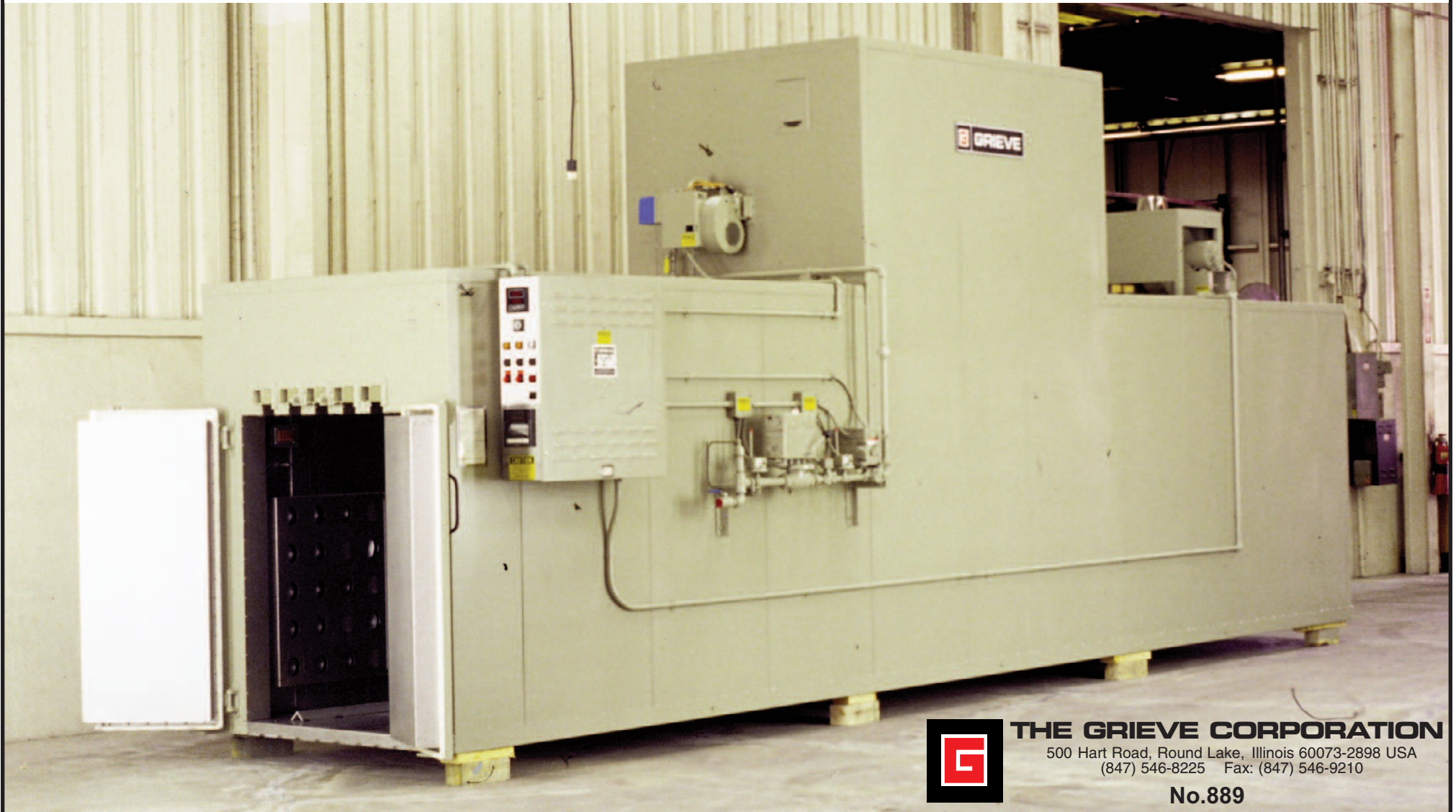


**SPECIAL GAS-HEATED WALK IN OVEN, Serial No. 660443**

for curing carbon/epoxy components hung on monorails

- maximum operating temperature: 350°F
- workspace dimensions: 36" wide x 282" deep x 48" high
- 350,000 BTU/HR installed in a modulating natural gas burner
- 10,000 CFM, 7<sup>1</sup>/<sub>2</sub>-HP recirculating blower providing combination airflow
- 4" insulated walls
- top mounted heat chamber

- aluminized steel interior and exterior
- five (5) monorail tracks mounted at the top of the workspace
- safety equipment required by IRI, FM and National Fire Protection Association Standard 86 for gas-heated equipment including 325 CFM 1/3-HP powered forced exhauster
- digital programming temperature controller
- Yokogawa 6 point strip chart recorder; 1 point air temperature, 2 points vacuum, 3 points load temperature



**THE GRIEVE CORPORATION**

500 Hart Road, Round Lake, Illinois 60073-2898 USA  
(847) 546-8225 Fax: (847) 546-9210

**No.889**