

**Models DX1002/DX1004/DX1006/DX1012/  
DX1002N/DX1004N/DX1006N/DX1012N  
Daqstation DX1000/DX1000N  
Operation Guide**

---

**vigilantplant.®**

# User Registration

Thank you for purchasing YOKOGAWA products.

We invite you to register your products in order to receive the most up to date product information. To register, visit the following URL.

***<http://www.yokogawa.com/ns/reg/>***

# Contents

---

Safety Precautions .....	4
Handling Precautions of the DX.....	5
Handling Precautions of the External Storage Medium (CF Card) .....	5
Checking the Contents of the Package .....	5
Style number, release number, and firmware version number of the DX .....	6
Protection of Environment .....	7
Conventions Used in This Manual .....	7
Opening the Electronic Manuals .....	7
Revision History .....	7
<b>Introduction to Functions .....</b>	<b>8</b>
Measured Items .....	8
Data Storage Function .....	8
Display Function .....	8
Other Functions .....	8
DAQSTANDARD.....	8
DX System Configuration .....	9
Terminology .....	9
<b>Names of Parts .....</b>	<b>10</b>
<b>DX1000/DX1000N Workflow.....</b>	<b>12</b>
<b>Turning the Power ON/OFF (DX1002, DX1004, DX1006, and DX1012 Only).....</b>	<b>13</b>
Turning the Power ON .....	13
Turning the Power OFF .....	13
<b>Basic Operation .....</b>	<b>14</b>
Panel Keys.....	14
Display .....	14
Display on the Status Display Section .....	15
Run Modes .....	16
Entering Values and Characters .....	17
Changing the Date/Time .....	18
Operation Example in the Setting Mode: Changing the Input Range .....	19
Operation Example in the Basic Setting Mode: Changing the Scan Interval .....	22
Inserting/Removing a CF Card .....	24
⚠ Saving the Setup Data .....	26
Loading the Setup Data .....	27
<b>Setting the Input Range and Alarm.....</b>	<b>28</b>
Setup Example 1: Temperature Measurement Channel .....	28
Setup Example 2: Flow Rate Measurement Channel and Alarm.....	29
<b>Setting the Display .....</b>	<b>30</b>
Setup Example 3: Assigning Channels to Groups .....	30
Setup Example 4: Setting the Time Scale .....	31
<b>Setting the Data Storage.....</b>	<b>32</b>
Setup Example 5: Continuously Record Measured Data and Automatically Save .....	32
Setup Example 6: Saving Measured Data at the Specified Time .....	35
<b>Customizing the Operation.....</b>	<b>36</b>
Setup Example 7: Assigning the Screen Image Data Storage Function to the USER Key .....	36
Setup Example 8: Registering Frequently Used Screens to the Favorite Key .....	37

## Contents

<b>Operation</b>	<b>39</b>
Starting Memory Sampling	39
Stopping Memory Sampling	39
Switching the Trend Display, Digital Display, and Bar Graph Display	40
Writing the Message "START"	41
<b>Connecting to an Ethernet Network</b>	<b>43</b>
Setup Example 9: Monitoring the DX on a PC Browser	43
Setup Example 10: Automatically Transferring the Measured Data File to an FTP Server	46
<b>Using DAQSTANDARD</b>	<b>48</b>
Displaying the Measured Data on DAQSTANDARD	48
<b>Installation and Wiring</b>	<b>49</b>
Installation Location	49
Installation Procedure	50
⚠ Input Signal Wiring	52
⚠ Optional Terminal Wiring	55
Alarm Output Terminal (/A1, /A2, and /A3), FAIL Output Terminal, and Status Output Terminal (/F1)	58
Remote Control Input Terminal (/R1)	58
Pulse Input Terminal (/PM1)	58
24 VDC Transmitter Power Supply Output Terminal (/TPS2 and /TPS4)	58
Serial Interface	58
Connecting to the USB Port (/USB1)	59
Connecting to the Ethernet Port	59
⚠ Power Supply Wiring	60
<b>Recommended Replacement Periods for Worn Parts</b>	<b>62</b>
<b>Setup Items and Default Values</b>	<b>63</b>
Setup Items in Setting Mode and Their Default Values	65
Setup Items in Basic Setting Mode and Their Default Values	77

## Daqstation DX1000/DX1000N User's Manual (Electronic Manual Provided on the Accompanying CD)

Chapter 1	Overview of Functions
Chapter 2	Common Operations
Chapter 3	Measurement Channels and Alarms
Chapter 4	Switching Operation Screens
Chapter 5	Operations for Changing the Displayed Contents
Chapter 6	Saving and Loading Data
Chapter 7	Customizing the Action Using the Event Action and Remote Control Functions (/R1 and /PM1 Options)
Chapter 8	Using the Security Function
Chapter 9	Computation and Report Functions (/M1 and /PM1 Options)
Chapter 10	Troubleshooting
Chapter 11	Maintenance
Chapter 12	Specifications

## Daqstation DX1000/DX1000N/DX2000 Communication Interface User's Manual (Electronic Manual Provided on the Accompanying CD)

Chapter 1	Using the Ethernet Interface
Chapter 2	Using the Serial Interface
Chapter 3	Commands
Chapter 4	Responses
Chapter 5	Status Reports
Chapter 6	Specifications

Thank you for purchasing the Daqstation DX1000/DX1000N (DX). This manual describes the basic operating procedures and installation and wiring procedures of the DX1000/DX1000N. To ensure correct use, please read this manual and the manuals below thoroughly before beginning operation.

#### Paper Manual

Manual Title	Manual No.
DX1000/DX1000N Operation Guide	IM 04L41B01-02E
This manual. It is also provided in the CD.	
Control of Pollution Caused by the Product	IM 04L41B01-91C
Gives a description of pollution control.	

#### Electronic Manuals Provided on the Accompanying CD

Manual Title	Manual No.
DX1000/DX1000N Operation Guide	IM 04L41B01-02E
This is the electronic version of the paper manual.	
DX1000/DX1000N User's Manual	IM 04L41B01-01E
Describes how to use the DX. The communication and network functions, custom display functions, and some of the options are excluded.	
DX1000/DX1000N/DX2000 Multi Batch (/BT2) User's Manual	IM 04L41B01-03E
Describes how to use the multi batch function (/BT2 option).	
DX1000/DX1000N/DX2000 Custom Display User's Manual	IM 04L41B01-04E
Describes how to use the custom display function.	
DX1000/DX1000N/DX2000 Advanced Security (/AS1) User's Manual	IM 04L41B01-05EN
Describes how to use the advanced security function (/AS1 option).	
DX1000/DX1000N/DX2000 Communication Interface User's Manual	IM 04L41B01-17E
Describes how to use the communication functions using the Ethernet and serial interfaces.	
DX1000/DX1000N/DX2000 EtherNet/IP Communication Interface User's Manual	IM 04L41B01-18E
Describes how to use communication functions through the EtherNet/IP interface.	
DX1000/DX1000N/DX2000 PROFIBUS-DP (/CP1) Communication Interface User's Manual	IM 04L41B01-19E
Describes how to use communication functions through the PROFIBUS-DP interface (/CP1 option).	

#### DAQSTANDARD Manuals

All manuals other than IM 04L41B01-66EN are contained in the DAQSTANDARD CD.

Manual Title	Manual No.
DAQSTANDARD Viewer User's Manual	IM 04L41B01-63EN
DAQSTANDARD Hardware Configurator User's Manual	IM 04L41B01-64EN
DAQSTANDARD DX-P Hardware Configurator User's Manual	IM 04L41B01-65EN
Installing DAQSTANDARD	IM 04L41B01-66EN

## Notes

- The contents of this manual are subject to change without prior notice as a result of continuing improvements to the instrument's performance and functions.
- Every effort has been made in the preparation of this manual to ensure the accuracy of its contents. However, should you have any questions or find any errors, please contact your nearest YOKOGAWA dealer.
- Copying or reproducing all or any part of the contents of this manual without YOKOGAWA's permission is strictly prohibited.
- The TCP/IP software of this product and the document concerning the TCP/IP software have been developed/created by YOKOGAWA based on the BSD Networking Software, Release 1 that has been licensed from the Regents of the University of California.

## Revisions

1st Edition:	December 2005
2nd Edition:	October 2006
3rd Edition:	April 2007
4th Edition:	December 2007
5th Edition:	November 2008
6th Edition:	March 2010
7th Edition:	December 2010

## Trademarks

- vigilantplant, DAQSTATION, Daqstation, and DXAdvanced are registered trademarks of Yokogawa Electric Corporation.
- Microsoft and Windows are registered trademarks or trademarks of Microsoft Corporation in the United States and/or other countries.
- Adobe and Acrobat are registered trademarks or trademarks of Adobe Systems Incorporated.
- Kerberos is a trademark of the Massachusetts Institute of Technology (MIT).
- Company and product names that appear in this manual are registered trademarks or trademarks of their respective holders.
- The company and product names used in this manual are not accompanied by the registered trademark or trademark symbols (® and ™).

## Safety Precautions

This instrument conforms to IEC safety class I (provided with terminal for protective grounding), Installation Category II, and EN61326-1 (EMC standard), Measurement Category II (CAT II)\*.

\* Measurement category II (CAT II) applies to measuring circuits connected to low voltage installation, and electrical instruments supplied with power from fixed equipment such as electric switchboards.

This instrument is an EN61326-1 (EMC standard) class A instrument (for use in commercial, industrial, or business environments).

The general safety precautions described here must be observed during all phases of operation. If the DX is used in a manner not described in this manual, the DX safety features may be impaired. Yokogawa Electric Corporation assumes no liability for the customer's failure to comply with these requirements.

The DX is designed for indoor use.

### • About This Manual

- Please pass this manual to the end user. We also ask you to store this manual in a safe place.
- Read this manual thoroughly and have a clear understanding of the product before operation.
- This manual explains the functions of the product. It does not guarantee that the product will suit a particular purpose of the user.

### • Precautions Related to the Protection, Safety, and Alteration of the Product

The following safety symbols are used on the product and in this manual.



**"Handle with care." To avoid injury and damage to the instrument, the operator must refer to the explanation in the manual.**



**Protective ground terminal**



**Functional ground terminal (do not use this terminal as a protective ground terminal.)**



**Alternating current**



**Direct current**



**ON (power)**



**OFF (power)**

- For the protection and safe use of the product and the system in which this product is incorporated, be sure to follow the instructions and precautions on safety that are stated in this manual whenever you handle the product. Take special note that if you handle the product in a manner that violates these instructions, the protection functionality of the product may be damaged or impaired. In such cases, YOKOGAWA does not guarantee the quality, performance, function, and safety of product.
- When installing protection and/or safety circuits such as lightning protection devices and equipment for the product and control system or designing or installing separate protection and/or safety circuits for fool-proof design and fail-safe design of the processes and lines that use the product and the control system, the user should implement these using additional devices and equipment.
- If you are replacing parts or consumable items of the product, make sure to use parts specified by YOKOGAWA.
- This product is not designed or manufactured to be used in critical applications that directly affect or threaten human lives. Such applications include nuclear power equipment, devices using radioactivity, railway facilities, aviation equipment, air navigation facilities, aviation facilities, and medical equipment. If so used, it is the user's responsibility to include in the system additional equipment and devices that ensure personnel safety.
- Do not modify this product.

## WARNING

### • Use the Correct Power Supply

Ensure that the source voltage matches the voltage of the power supply before turning ON the power. In the case of a desktop type, ensure that it is within the maximum rated voltage range of the provided power cord before connecting the power cord.

### • Use the Correct Power Cord and Plug (Desktop Type)

To prevent electric shock or fire, be sure to use the power cord supplied by YOKOGAWA. The main power plug must be plugged into an outlet with a protective earth terminal. Do not disable this protection by using an extension cord without protective earth grounding.

The power cord is designed for use with this instrument. Do not use the power cord with other instruments.

### • Connect the Protective Grounding Terminal

Make sure to connect the protective grounding to prevent electric shock before turning ON the power.

The power cord that comes with the desktop type is a three-prong type power cord. Connect the power cord to a properly grounded three-prong outlet.

### • Do Not Impair the Protective Grounding

Never cut off the internal or external protective grounding wire or disconnect the wiring of the protective grounding terminal. Doing so invalidates the protective functions of the instrument and poses a potential shock hazard.

### • Do Not Operate with Defective Protective Grounding

Do not operate the instrument if the protective grounding might be defective. Also, make sure to check them before operation.

### • Do Not Operate in an Explosive Atmosphere

Do not operate the instrument in the presence of flammable liquids or vapors. Operation in such an environment constitutes a safety hazard.

Prolonged use in a highly dense corrosive gas (H<sub>2</sub>S, SO<sub>x</sub>, etc.) will cause a malfunction.

### • Do Not Remove Covers

The cover should be removed by YOKOGAWA's qualified personnel only. Opening the cover is dangerous, because some areas inside the instrument have high voltages.

### • Ground the Instrument before Making External Connections

Connect the protective grounding before connecting to the item under measurement or control unit.

### • Damage to the Protection

Operating the instrument in a manner not described in this manual may damage the instrument's protection.

## CAUTION

This instrument is a Class A product. Operation of this instrument in a residential area may cause radio interference, in which case the user is required to take appropriate measures to correct the interference.

### • Exemption from Responsibility

- YOKOGAWA makes no warranties regarding the product except those stated in the WARRANTY that is provided separately.
- YOKOGAWA assumes no liability to any party for any loss or damage, direct or indirect, caused by the user or any unpredictable defect of the product.

### • Handling Precautions of the Software

- YOKOGAWA makes no warranties regarding the software accompanying this product except those stated in the WARRANTY that is provided separately.
- Use the software on a single PC.
- You must purchase another copy of the software, if you are to use the software on another PC.

- Copying the software for any purposes other than backup is strictly prohibited.
- Please store the original media containing the software in a safe place.
- Reverse engineering, such as decompiling of the software, is strictly prohibited.
- No portion of the software supplied by YOKOGAWA may be transferred, exchanged, or sublet or leased for use by any third party without prior permission by YOKOGAWA.

## Handling Precautions of the DX

- Use care when cleaning this instrument, especially its plastic parts. Use a soft dry cloth. Do not use organic solvents, such as benzene or thinner, or other cleansers. They may cause discoloring and deformation.
- Keep electrically charged objects away from the signal terminals. If you do, the DX may malfunction.
- Do not apply volatile chemicals to the display, panel keys, etc. Do not allow rubber and vinyl products to remain in contact with the DX for long periods of time. If you do, the DX may malfunction.
- When not in use, make sure to turn OFF the power switch.
- If there are any symptoms of trouble such as strange odors or smoke coming from the DX, immediately turn OFF the power switch and the power supply source. Then, contact your nearest YOKOGAWA dealer.

## Handling Precautions of the External Storage Medium (CF Card)

- Use caution in the handling of the external storage medium as it is a delicate product.
- Write operation to storage media may fail under high-temperature or low-temperature environments. If you are using the DX in a low-temperature environment (around 10 °C or less), use the DX after the warm-up time (at least 30 minutes) has elapsed. If you are using the DX under a high-temperature environment (around 40 °C or more), it is recommended that the external storage medium be inserted into the drive when saving the data and be removed after the data storage operation is finished.
- Remove the storage medium from the drive when turning the DX ON/OFF.
- Touching the compact flash section when static electricity is built up on the human body can lead to erroneous operation.
- For the general handling precautions of the external storage medium, see the instruction manual that came with the external storage medium.

### CAUTION

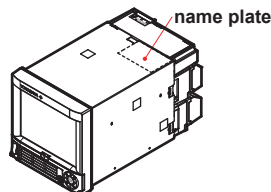
- Do not eject the external storage medium while the access indicator is illuminated. This can damage the data.
- Do not access the storage medium in a place with vibrations or shock. The storage medium or drive may malfunction.

## Checking the Contents of the Package

Unpack the box and check the contents before operating the instrument. If some of the contents are not correct or missing or if there is physical damage, contact the dealer from which you purchased them.

### DX

A name plate is located on the top panel of the DX (side panel on models with the /H5[ ] option). Check that the model name and suffix code given on the name plate match those on your order.



MODEL	STYLE
SUFFIX	
SUPPLY	
FREQUENCY	
NO.	

### NO. (Instrument Number)

When contacting the dealer from which you purchased the instrument, please give them the instrument number.

### MODEL and SUFFIX Cod

Model code	Suffix code	Optional code	Description
DX1002			Daqstation DX1000 2ch, 125ms (25ms <sup>*12</sup> )
DX1004			Daqstation DX1000 4ch, 125ms (25ms <sup>*12</sup> )
DX1006			Daqstation DX1000 6ch, 1s (125ms <sup>*12</sup> )
DX1012			Daqstation DX1000 12ch, 1s (125ms <sup>*12</sup> )
DX1002N <sup>*11</sup>			Daqstation DX1000N 2ch, 125ms (25ms <sup>*12</sup> )
DX1004N <sup>*11</sup>			Daqstation DX1000N 4ch, 125ms (25ms <sup>*12</sup> )
DX1006N <sup>*11</sup>			Daqstation DX1000N 6ch, 1s (125ms <sup>*12</sup> )
DX1012N <sup>*11</sup>			Daqstation DX1000N 12ch, 1s (125ms <sup>*12</sup> )
Internal memory size	-3		Standard Memory (400 MB)
External storage medium	-4		CF card (with medium)
Language	-1		English/German/French, deg F, and DST
	-2		(English version of DAQSTANDARD included)
Options			
	/A1		Alarm output 2 points <sup>*1</sup>
	/A2		Alarm output 4 points <sup>*1</sup>
	/A3		Alarm output 6 points <sup>*1,2</sup>
	/C2		RS-232 interface <sup>*3</sup>
	/C3		RS-422/485 interface <sup>*3</sup>
	/F1		FAIL/Status output <sup>*2</sup>
	/H2		Clamped input terminal (detachable)
	/H5[ ]		Desktop type <sup>*4</sup>
	/M1		Mathematical functions
	/N1		Cu10, Cu25 RTD input/3 leg isolated RTD
	/N2		3 leg isolated RTD <sup>*5</sup>
	/N3		Extended input type (PR40-20, JPt50, etc.)
	/P1		24 VDC/AC power supply <sup>*4</sup>
	/R1		Remote control
	/TPS2		24VDC transmitter power supply (2 loops) <sup>*6</sup>
	/TPS4		24VDC transmitter power supply (4 loops) <sup>*7</sup>
	/KB1		Easy text entry (with input terminal) <sup>*8,9</sup>
	/KB2		Easy text entry (without input terminal) <sup>*8</sup>
	/USB1		USB interface
	/PM1		Pulse input (including remote control and mathematical functions) <sup>*10</sup>
	/CC1		Calibration correction function
	/BT2		Multi batch function <sup>*12</sup>
	/CP1		PROFIBUS-DP <sup>*3</sup>
	/AS1		Advanced security function

<sup>\*1</sup> /A1, /A2, /A3 cannot be specified together.

<sup>\*2</sup> /A3 and /F1 cannot be specified together.

<sup>\*3</sup> /C2, /C3, and /CP1 cannot be specified together.

<sup>\*4</sup> /H5[ ] can be specified for only DX1002, DX1004, DX1006, and DX1012.

- D: Power cord UL, CSA st'd
- F: Power cord VDE st'd
- R: Power cord AS st'd
- J: Power cord BS st'd
- H: Power cord GB st'd
- Null (/H5): Only for /P1 model (without power cord)

<sup>\*5</sup> /N2 can be specified for only DX1006, DX1006N, DX1012, and DX1012N.

<sup>\*6</sup> In case that /TPS2 is specified, /TPS4, /A2, /A3, or /F1 cannot be specified together.

<sup>\*7</sup> In case that /TPS4 is specified, /TPS2, /A1, /A2, /A3, or /F1 cannot be specified together.

<sup>\*8</sup> /KB1 and /KB2 cannot be specified together.

<sup>\*9</sup> In case that /KB1 is specified, remote input terminal (438227) is included.

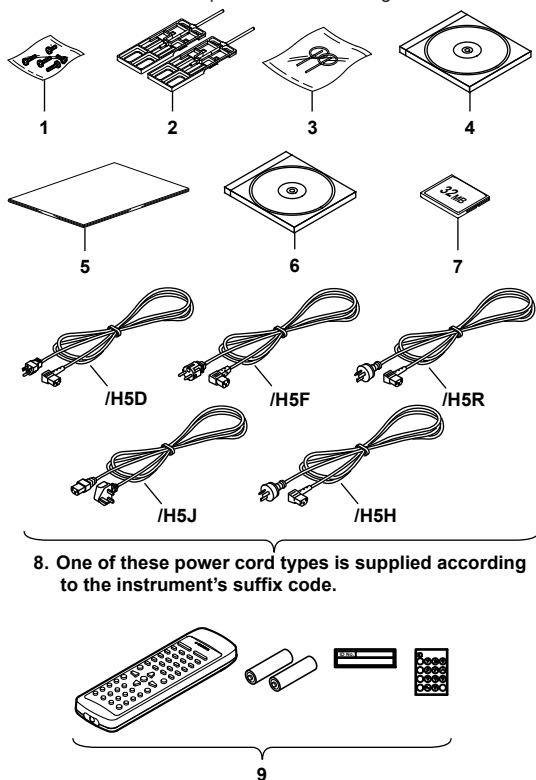
<sup>\*10</sup> In case that /PM1 is specified, /A3, /M1, /R1, /TPS2, or /TPS4 cannot be specified. And combination of /A2, /F1 cannot be specified together.

<sup>\*11</sup> DX1002N, DX1004N, DX1006N, and DX1012N are Pull Out Models.

<sup>\*12</sup> /BT2 can only be specified for the DX1006, DX1006N, DX1012, and DX1012N.

## Standard Accessories

The standard accessories below are supplied with the instrument.  
Check that all contents are present and undamaged.



No.	Name	Part Number/ Model	Qty.	Notes
1	Terminal screws	E9655FX	5	M4 (spares)
2	Mounting brackets	B9900BX	2	For panel mounting Except for the /H5[ ] models.
3	Door lock key	B8706FX	2	—
4	DAQSTANDARD	DXA120	1	CD. Contains the software and user's manuals.
5	DX1000/DX1000N Operation Guide (this manual)	IM 04L41B01-02E	1	A4 size
	DXA120 Installing DAQSTANDARD	IM 04L41B01- 066EN	1	
	Control of Pollution Caused by the Product	IM 04L41B01-91C	1	
6	User's Manuals for the DX1000/ DX1000N/DX2000	B8706ZZ	1	CD. Contains the PDF file of the user's manual.
7	CF card	B8706NQ	1	128 MB (The size and model may change.)
8	Power cord	A1006WD	1	Supplied only for models with the /H5D option. Maximum rated voltage: 125 V
		A1009WD	1	Supplied only for models with the /H5F option. Maximum rated voltage: 250 V
		A1024WD	1	Supplied only for models with the /H5R option. Maximum rated voltage: 250 V
		A1054WD	1	Supplied only for models with the /H5J option. Maximum rated voltage: 250 V
		A1064WD	1	Supplied only for models with the /H5H option. Maximum rated voltage: 250 V

No.	Name	Part Number/ Model	Qty.	Notes
9	Remote control terminal	438227	1	Remote controller. Supplied only for models with the /KB1 option. With two AA alkaline batteries and labels for the remote control terminal.

## Optional Accessories (Sold Separately)

The following optional accessories are available for purchase separately. If you make an order, make sure that all contents are present and undamaged. For information about ordering accessories, contact the dealer from which you purchased the DX.

No.	Name	Model	Minimum Q'ty	Notes
1	CF card	772093	1	512 MB
		772094	1	1 GB
		772095	1	2 GB
2	CF card adapter	772090	1	—
3	Shunt resistor (for screw input terminal)	415920	1	250 $\Omega \pm 0.1\%$
		415921	1	100 $\Omega \pm 0.1\%$
		415922	1	10 $\Omega \pm 0.1\%$
4	Shunt resistor (for clamped input terminal)	438920	1	250 $\Omega \pm 0.1\%$
		438921	1	100 $\Omega \pm 0.1\%$
		438922	1	10 $\Omega \pm 0.1\%$
5	Mounting brackets	B9900BX	2	—
6	Door lock key	B8706FX	1	—
7	Remote control terminal	438227	1	Remote controller.
8	Validation document	—	1	Electronic file

## Style number, release number, and firmware version number of the DX

**Style number:** This is the DX hardware number that is indicated on the name plate.

**Release number:** This is the DX firmware number that is indicated on the name plate. The number corresponds to the integer part of the firmware version number.

**Example:** If the firmware version number is 2.01, the release number is 2.

**Firmware version number:** This number is displayed on the DX system information screen. For the procedure, see section 2.5, "Viewing the DX Information" in the *DX1000/DX1000N User's Manual (IM 04L41B01-01E)*.

MODEL	STYLE
SUFFIX	2 2
SUPPLY	
FREQUENCY	
NO.	

Release number  
Style number



## Protection of Environment

### Control of Pollution Caused by the Product



For details, see the *Control of Pollution Caused by the Product* (IM04L41B01-91C).

### Proper Disposal of This Product

This is an explanation of how to dispose of this product based on Waste Electrical and Electronic Equipment (WEEE), Directive 2002/96/EC. This directive is only valid in the EU.

- **Marking**  
This product complies with the WEEE Directive (2002/96/EC) marking requirement.  
The affixed product label (see below) indicates that you must not discard this electrical/electronic product in domestic household waste.



- **Product Category**  
With reference to the equipment types in the WEEE directive Annex 1, this product is classified as a "Monitoring and Control instrumentation" product.  
Do not dispose in domestic household waste.  
To return unwanted products, contact your local Yokogawa Europe B. V. office.

## Conventions Used in This Manual

- This manual covers information regarding DX1000/DX1000Ns that have a suffix code for language "-2" (English).
- For details on how to set the language, see section 2.6, "Changing the Language" in the *DX1000/DX1000N User's Manual* (IM 04L41B01-01E).

### Unit

K: Denotes 1024. Example: 768 KB (file size)

k: Denotes 1000.

The following markings are used in this manual.



*Improper handling or use can lead to injury to the user or damage to the instrument.* This symbol appears on the instrument to indicate that the user must refer to the user's manual for special instructions. The same symbol appears in the corresponding place in the user's manual to identify those instructions. In the manual, the symbol is used in conjunction with the word "WARNING" or "CAUTION."

### WARNING

Calls attention to actions or conditions that could cause serious or fatal injury to the user, and precautions that can be taken to prevent such occurrences.

### CAUTION

Calls attentions to actions or conditions that could cause light injury to the user or damage to the instrument or user's data, and precautions that can be taken to prevent such occurrences.

### Note

Calls attention to information that is important for proper operation of the instrument.



Indicates after this mark reference to related procedure or explanation.

### Bold characters

Indicates character strings that appear on the screen and the operation keys.

## Opening the Electronic Manuals

The accompanying CD contains PDF files of the manuals. When you load the CD into the CD-ROM drive on your PC, a startup screen appears. Click the manual title to open the respective manual.

If the startup screen does not appear, double-click DX\_manual in My Computer, and open the manuals in the English directory.

## Revision History

The contents of this manual corresponds to the DX with release number 4 and style number 3. For details on the functions that have been added or changed, see "DX's Version and Functions Described in This Manual" in the *DX1000/DX1000N User's Manual* (IM04L41B01-01E).

Edition	DX	Description
2	Version 1.11	Additions and improvements to
	Version 1.21	functionality.
3	Release number 2 (Version 2.0x)	Additions and improvements to
	Style number 2	functionality. NEMA4 compliance.
4	Same as edition 3	Additions and improvements to
		functionality. Changed the direction of the clamp input terminal (/H2 option).
5	Release number 3 (Version 3.0x)	Additions and improvements to
	Style number 3	functionality. Changed the boot ROM.
6	Release number 4 (version 4.0x)	Additions and improvements to
	Style number 3	functionality. Internal memory suffix code -3 has been added, and -1 and -2 have been removed.
7	Same as edition 6	Additions and improvements to explanations.

# Introduction to Functions

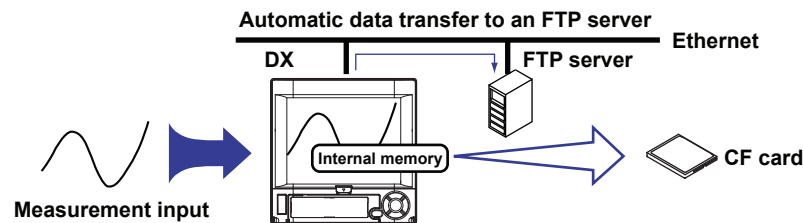
## Measured Items

You can connect DC voltage, thermocouple, RTD, and ON/OFF input and measure various values such as temperature and flow rate. The DX samples the input signals at the scan interval to obtain the measured values. The fastest scan interval is 25 ms on the DX1002, DX1002N, DX1004, and DX1004N and 125 ms on the DX1006, DX1006N, DX1012, and DX1012N.

Up to four alarm conditions can be set for each measurement channel.

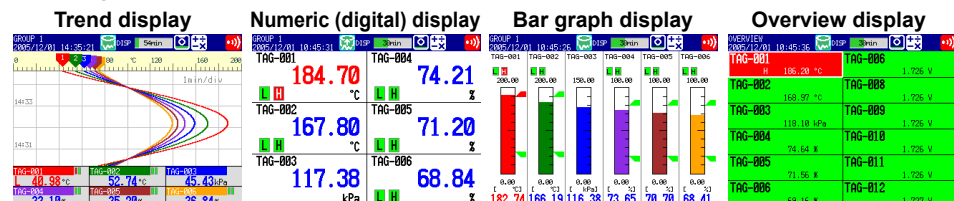
## Data Storage Function

There are two methods of recording measured data. One is to record the measured data continuously, and the other is to record only when certain events occur such as alarms. The measured data is recorded to the internal memory at a specified interval. The data in the internal memory can be stored to a CF card automatically or manually. By connecting to a network via the Ethernet interface, the measured data can also be automatically transferred to an FTP server on a network.



## Display Function

Measured data can be displayed as trends, numeric values, and bar graphs for each group. In addition, the overview display can be used to display and monitor all channels on a single screen.



## Other Functions

<b>Computation Function (option)</b>	Various types of computation can be performed by assigning equations to computation channels.
<b>FAIL/status output function (option)</b>	Outputs an alarm when the DX fails. The function also monitors the DX status such as the remaining amount of internal memory and outputs alarms.
<b>Remote control function (option)</b>	A specified action is executed when a remote input signal is applied to the terminal on the rear panel.
<b>Security function</b>	Enables only registered users can operate the DX. The function can also be used to prohibit key operation.
<b>Communication function</b>	The Ethernet interface can be used to monitor the DX using a Web browser and transmit e-mail when an event occurs such as an alarm. In addition, data of devices on the network can be loaded and displayed using the Modbus protocol.

## DAQSTANDARD

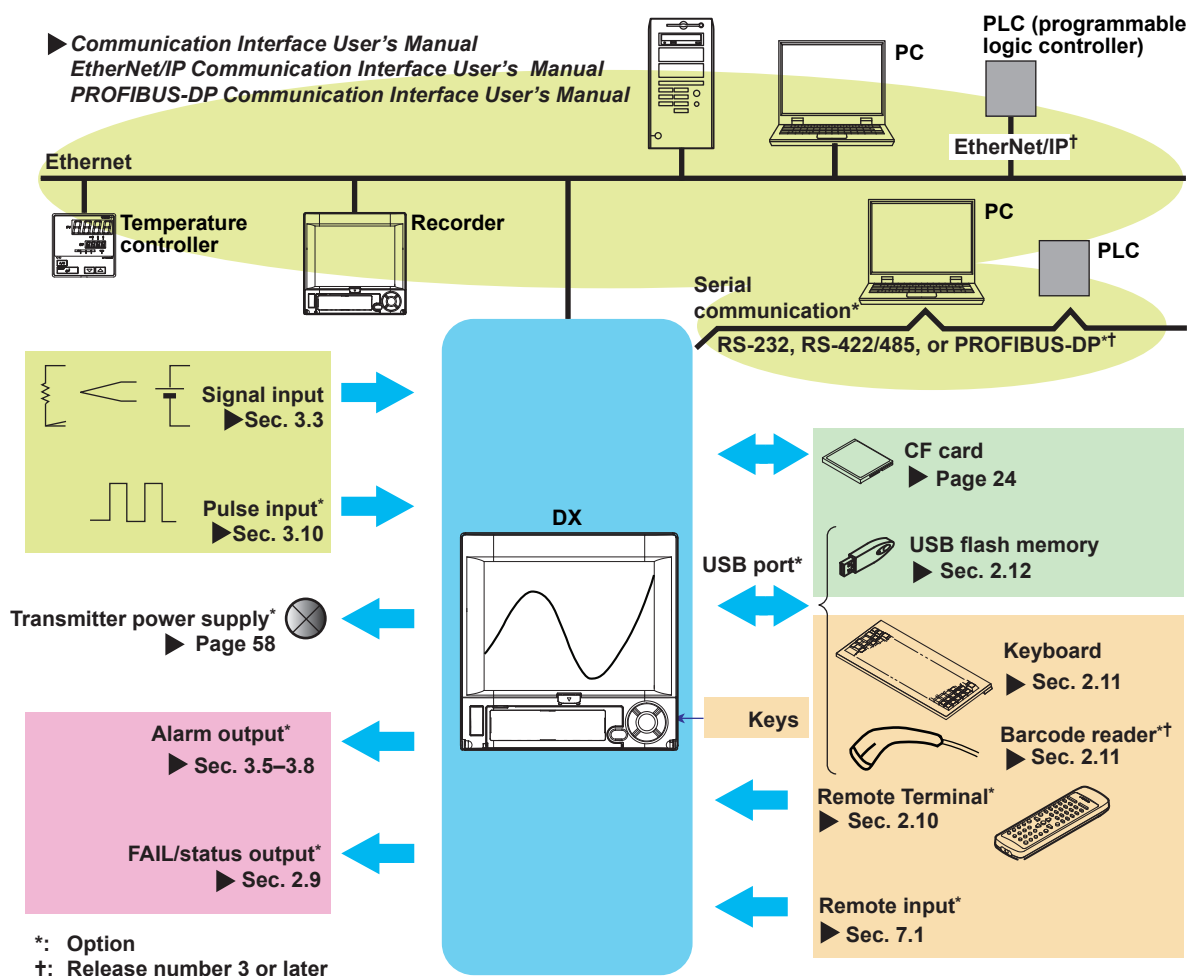
The accompanying software program, DAQSTANDARD, can be used to display the measured data, convert the measured data format, and create DX setup data.

## DX System Configuration

The DX can be used to configure a system as shown below.

Referenced sections are of the *DX1000/DX1000N User's Manual*.

Referenced pages are of this manual.

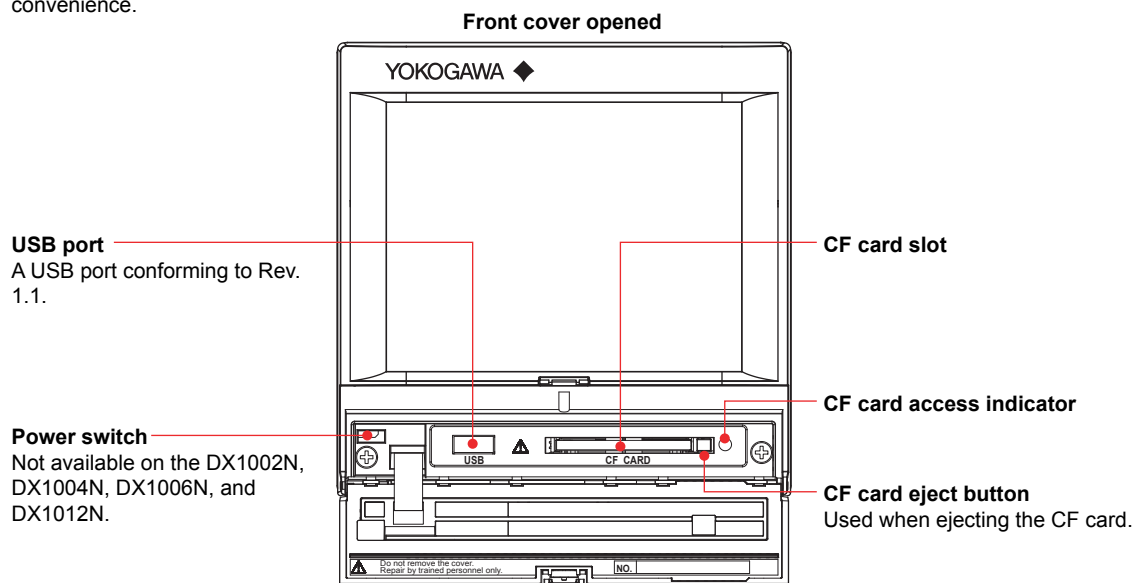
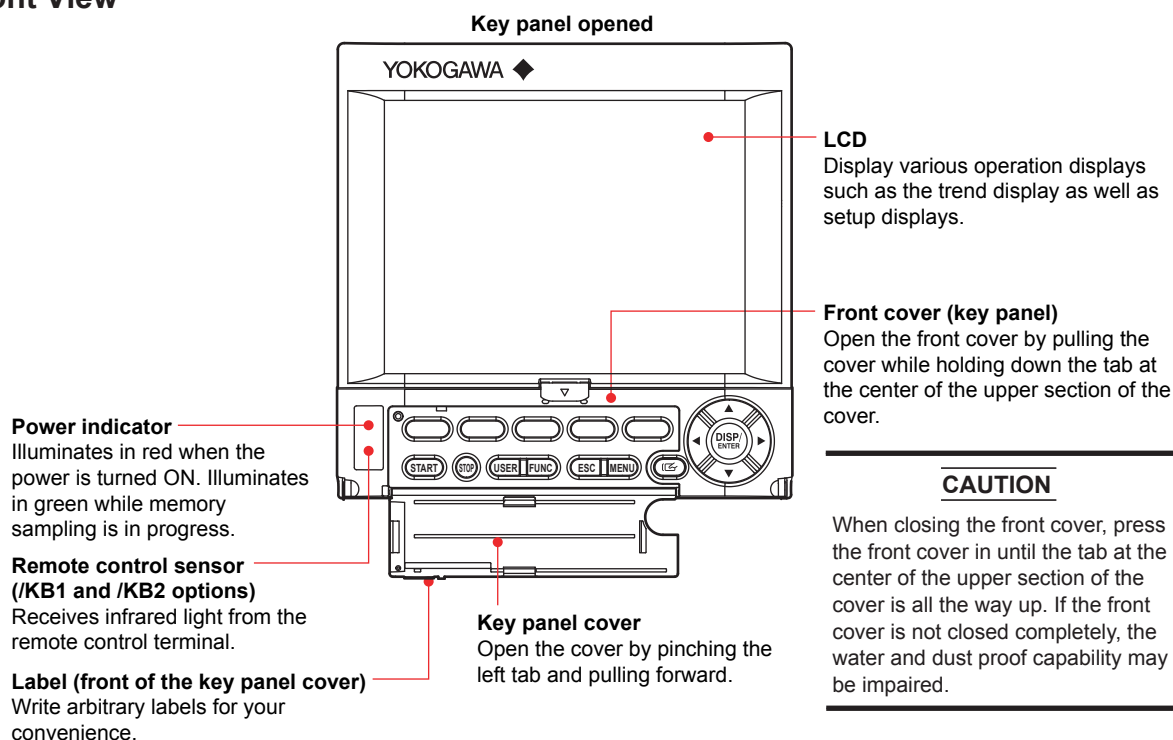


## Terminology

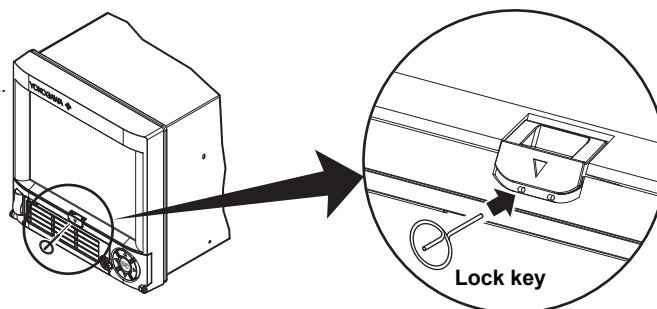
- **Memory sample**  
The operation of recording measured data.
- **Memory start**  
The operation of starting memory sampling.
- **Memory stop**  
The operation of stopping memory sampling.
- **Display data**  
The waveform data shown on the DX display. The data recorded at the sampling interval for the displayed data.
- **Event data**  
Measured data recorded at a sampling interval separate from that of the display data.

# Names of Parts

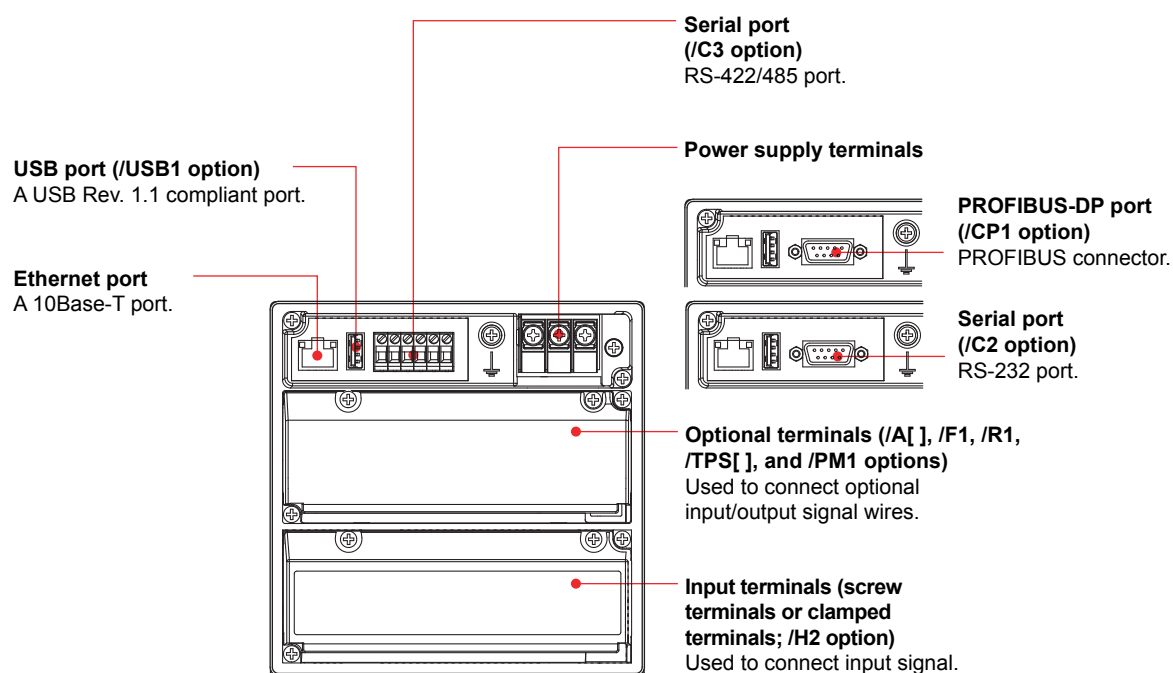
## Front View



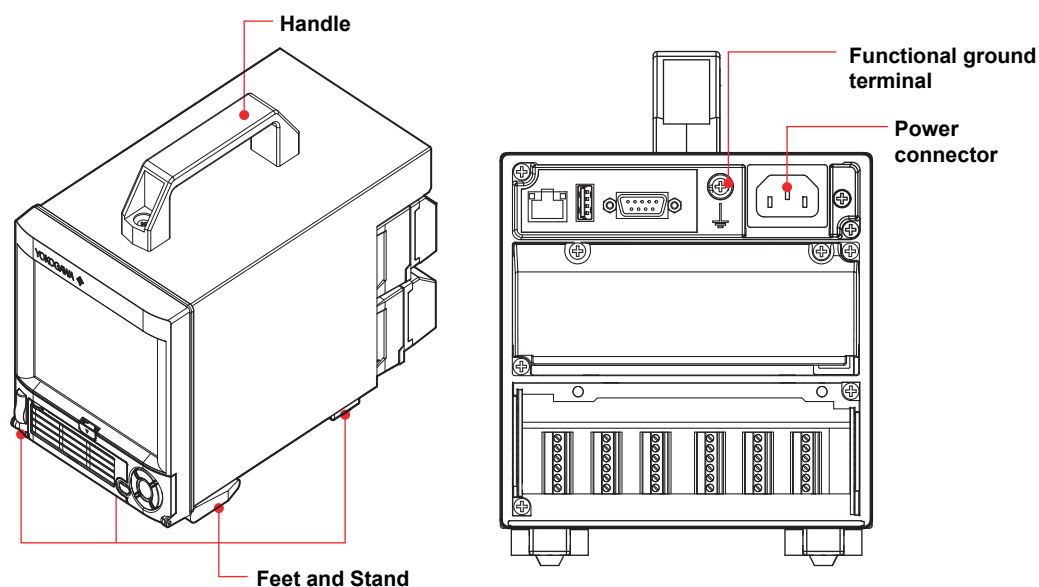
**Door lock key (included)**  
Insert the pin in the left hole to lock.  
Insert the pin in the right hole to unlock.



## Rear Panel

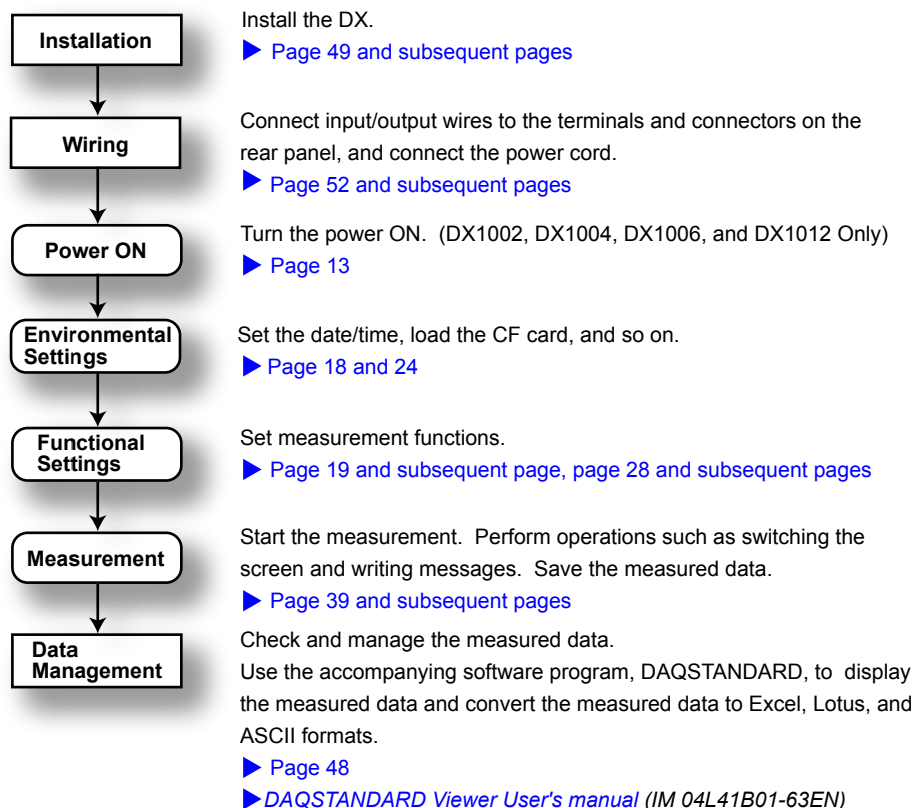


## Desktop Type (/H5[ ] Option)

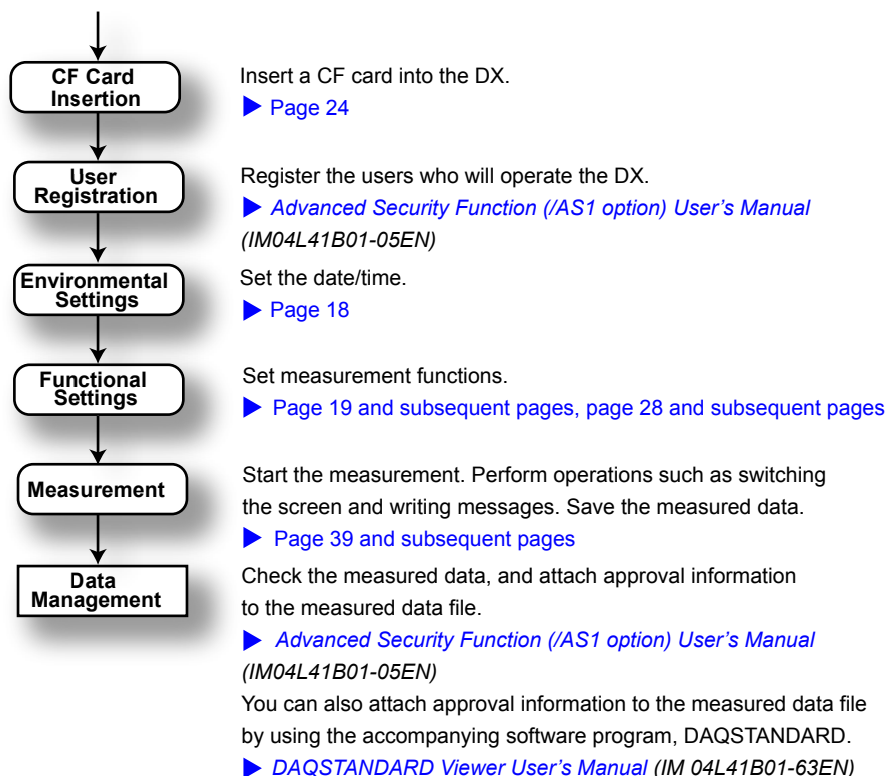


# DX1000/DX1000N Workflow

When using the DX for the first time, carry out the following procedure.



On a DX with advanced security (/AS1 option; release number 4 or later), carry out the following procedure after turning the DX on.



## Turning the Power ON/OFF (DX1002, DX1004, DX1006, and DX1012 Only)

### Turning the Power ON



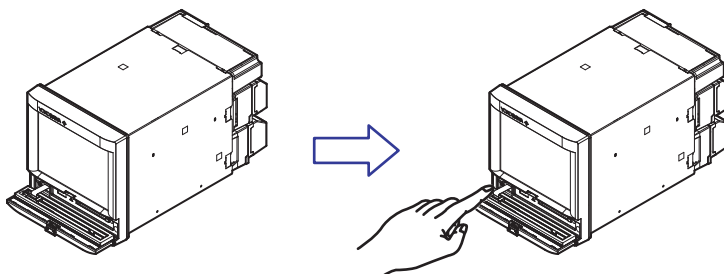
#### CAUTION

Before turning ON the power switch, check that

- The power cord/wires are connected correctly to the DX.
- The DX is connected to the correct power supply (see page 60).

If the input wires are connected in parallel with other devices, do not turn ON/OFF the power switch of the DX or another device during operation. This can have adverse effects on the measured values.

1. Open the operation cover.
2. Turn ON the power switch.  
After performing a self-test for a few seconds, the operation screen appears.



3. Close the operation cover.



#### CAUTION

- If nothing is displayed when the power switch is turned ON, turn OFF the power switch and check the points listed above one more time. After checking the points, turn ON the power switch again. If the DX still does not work, it is probably a malfunction. Contact your nearest YOKOGAWA dealer for repairs.
- If an error message is displayed on the screen, take measures according to the description in chapter 10, "Troubleshooting" in the *DX1000/DX1000N User's Manual*.
- Turn ON the power switch, let the DX warm up for at least 30 minutes, and then start the measurements.

### Turning the Power OFF



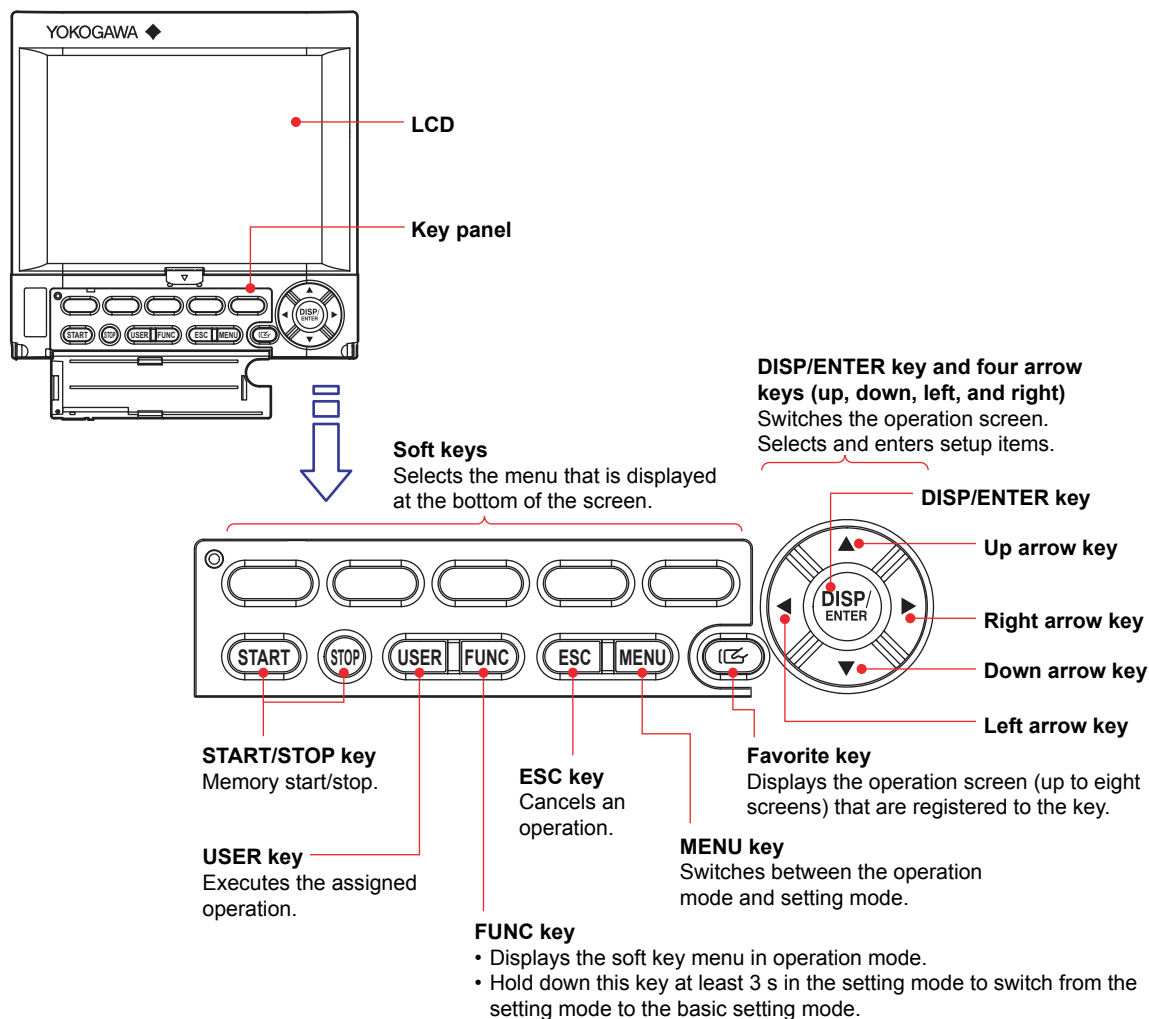
#### CAUTION

Before turning OFF the power switch, check that the external storage medium is not being accessed.

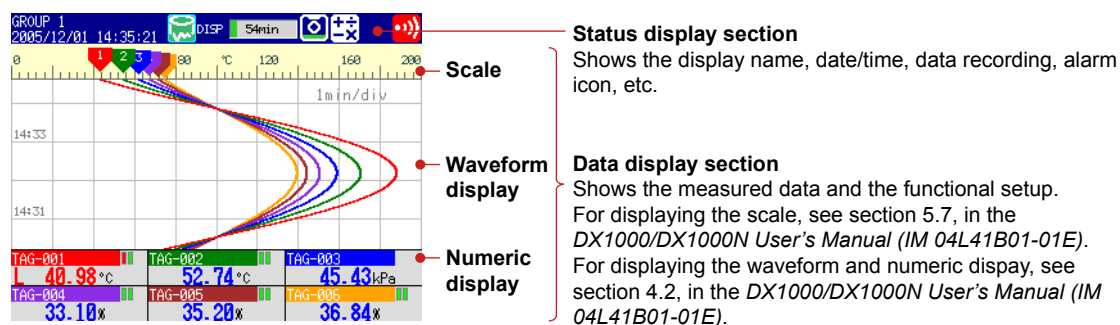
1. Open the operation cover.
2. Turn OFF the power switch.
3. Close the operation cover.

# Basic Operation

## Panel Keys



## Display





## Display on the Status Display Section

The following information is displayed in the status display section.

### Memory sampling status

Memory sampling stopped		<b>Data type</b> DISP: Display data EVENT: Event data
Memory sampling in progress		<b>Memory sampling progress</b> Displays the progress using a green bar graph. The frame indicates the file save interval (display data) or the data length (event data).
Memory sampling icon		Error in internal memory. Contact your nearest YOKOGAWA dealer for repairs. Displays the remaining memory sampling time for the left bar graph.

GROUP 1 ALL DISP 50min

#### Display name or group name

For all channel display on the trend display, "All" is displayed.

#### Date and time

Displayed in yellow while the time is being corrected.

#### When using the batch function

AAA-1234-000541  
2005/12/01 14:21:26

Batch name and the display name are shown alternately.  
Date and time

If the "batch number-lot number" exceeds 20 characters, the "date and time" position is used to display the "batch number-lot number."

#### When using the login function

Admin1  
2005/12/01 14:24:01

Name of the user logged in  
Date and time and the display name are shown alternately.

#### When using the login and batch functions

Admin1  
AAA-1234-000542

Name of the user logged in  
Batch name, the display name, and date and time are shown alternately.

#### Alarm icon

Displayed when any alarm is activated.  
Blinks when there are alarms that are occurring but have not been acknowledged. (Red)

All alarms have been released after they have occurred, but there are alarms that have not been acknowledged. (Green)

#### status icon

The status assigned to the status output (/F1 option) is occurring.

#### User Locked Icon (/AS1 option)

Displayed when the user is locked.



Keys are locked.



E-mail transmission is enabled.

#### Computation icon (/M1 or /PM1 option)

White icon: Computation started.

Yellow icon: Computation data dropout occurred.

#### CF card icon

CF card is being accessed.

Waiting.

Light blue icon: CF card in the slot is not recognized. Remove and reset it.

CF card error.  
Carry out the procedure below to reset the CF card icon to normal.

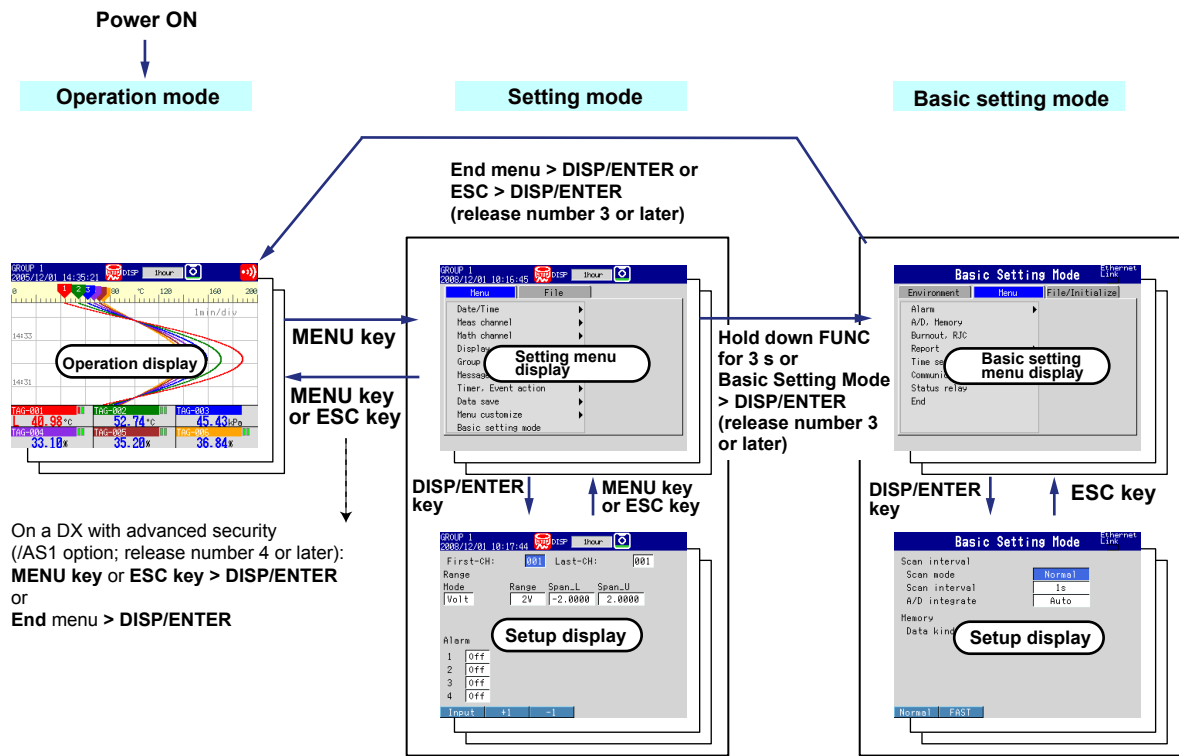
- Remove the CF card, and then reinsert it.
- Replace the CF card with a normal one.
- Format the CF card on the DX (the data on the CF card will be erased).

The green level display indicates the amount of CF card used. If Media FIFO\* is not enabled and the free space on the CF card falls below 10%, the level indicator changes to red.

\* See section 1.4, in the *DX1000/DX1000N User's Manual*. Media FIFO is a function available on release number 2 or later.

Run Modes

Mode Transition Diagram



The DX has three modes.

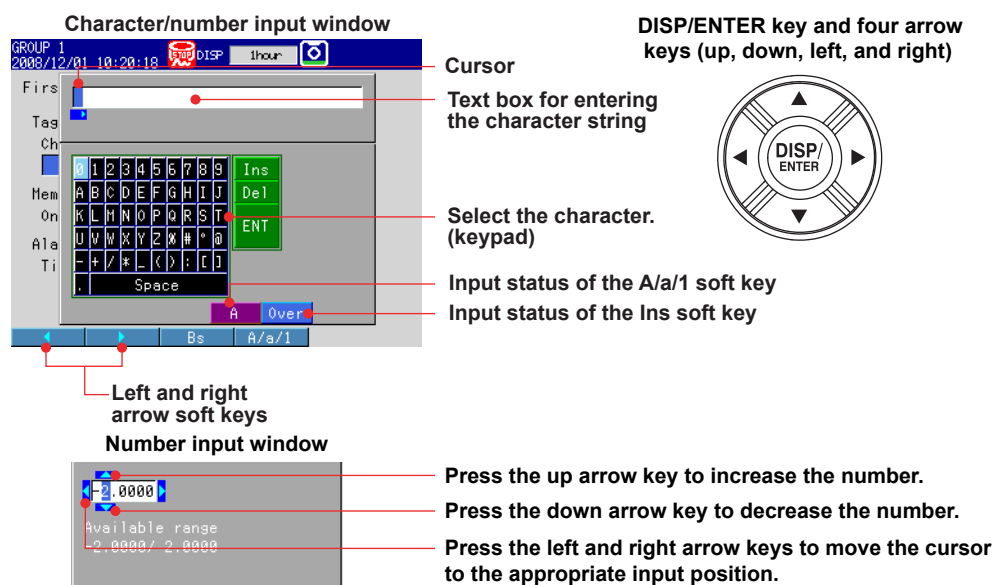
Mode	Description
Operation mode	A mode for performing measurements.
Setting mode	A mode in which input range, measurement method, and so on are configured. Settings can be changed when memory sampling is in progress excluding some items.
Basic setting mode	A mode used to set basic items such as the scan interval and storage format of measured data. On a DX with advanced security (/AS1 option; release number 4 or later), the login settings can be changed during memory sampling.

\* For further details on the basic setting mode and setting mode, see page 63.

Carry out the steps given in the following pages. It will help you to understand the DX operation.

## Entering Values and Characters

The character/number input window and DISP/ENTER key are used to set the date/time, set the display span of the input range, set the tag, set the message string, enter the password, etc.



## Entering Character Strings

When a window for entering a character string appears, enter it by performing the following key operation.

- **Left and right arrow soft keys:** Moves the cursor in the text box to select the input position.
- **Keypad:** Use the **four arrow keys (up, down, left, and right)** to move the cursor on the keypad to select the desired character.
  - Ins:** Switches between insert and overwrite.
  - Del:** Deletes the character at the cursor position in the text box.
  - ENT:** Enters the character string in the text box.
- **DISP/ENTER key:** Enter the character that you selected with the keypad in the text box or execute **Ins**, **Del**, or **ENT**.
- **Bs soft key:** Backspace. Deletes the character before the cursor.
- **A/a/1 soft key:** Selects uppercase alphabet (A), lowercase alphabet (a), or value (1).
 

The character type that you can enter changes each time you press the **A/a/1 soft key**. The selected character type is displayed at the bottom section of the character/number input window.

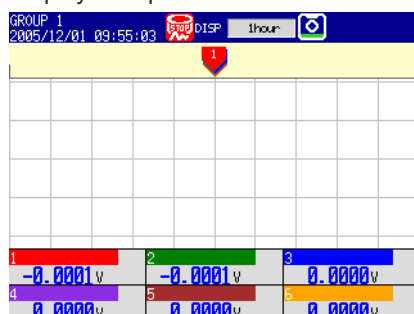
The contents of the screens in the operation examples below may change depending on which options are installed and how the settings are configured.

On a DX with advanced security (/AS1 option; release number 4 or later) you must first insert the CF card into the slot (see page 24).

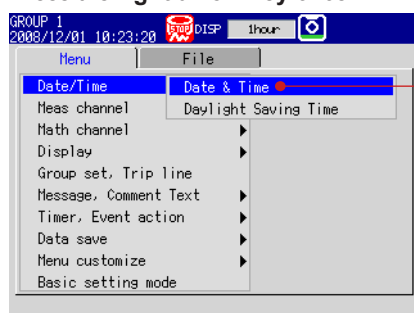
### Changing the Date/Time

In this example, we will change the date from the 1st to the 6th. After carrying out this step, reset the time to the correct date/time.

1. Display the operation mode screen.



2. Press **MENU** once to display the setting menu.
3. Press the **down arrow key** once.  
The cursor moves to **Date/Time**.
4. Press the **right arrow key** once.



Select Date & Time.

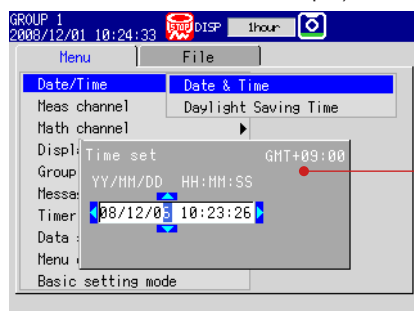
5. Press **DISP/ENTER** once to open the Time set window.
6. Change the date from 01 to 06.

Select the input position: Press the **right arrow key** five times to move the cursor in the text box.

Enter the value: Press the **up or down arrow key** several times to display 6.

Enter the input: Press **DISP/ENTER** once.

Cancel the setting: Press **ESC** before pressing **DISP/ENTER** (entering the input).

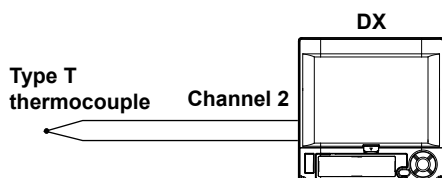


Display the Time set window.  
(Display after entering 6)

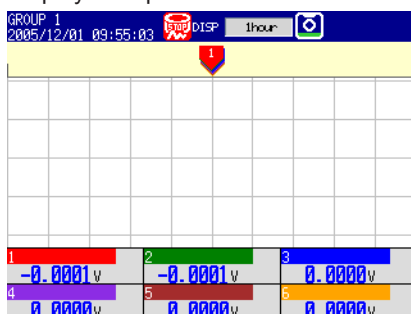
7. Press **ESC** twice or **MENU** once to return to the operation mode screen.  
On a DX with advanced security (/AS1 option; release number 4 or later):  
Press **ESC** twice or **MENU** once to display a confirmation screen. To return to the operation mode screen, select **Yes**, and press **DISP/ENTER** once.  
Operation complete.

### Operation Example in the Setting Mode: Changing the Input Range

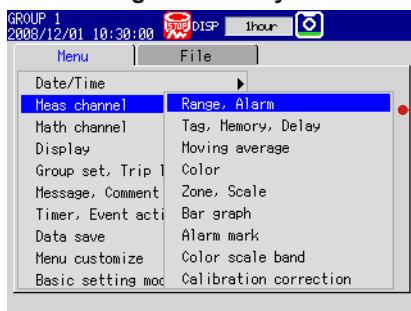
Set the input range of channel 2 to thermocouple type T and 0.0 to 400.0°C.



1. Display the operation mode screen.

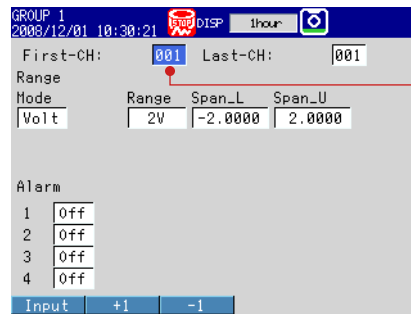


2. Press **MENU** once to display the setting menu.
3. Press the **down arrow key** twice to select **Meas channel**.
4. Press the **right arrow key** once.



Select the Range, Alarm.

5. Press **DISP/ENTER** once.

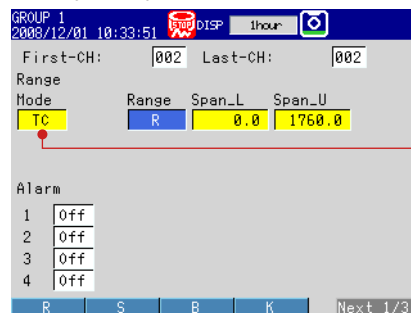


Select First-CH.

6. Press the **+1** soft key once to set **First-CH** and **Last-CH** to 2.

7. Press the **down arrow key** once to move the cursor to **Mode**.

8. Press the **TC** soft key once. The cursor moves to **Range**, and the changed item is displayed in yellow.

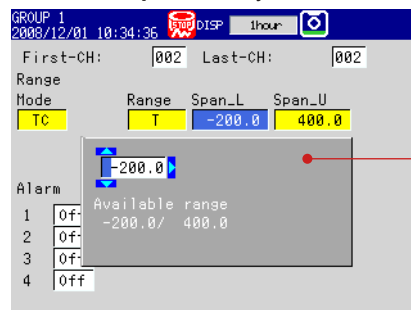


Select TC.

9. Press the **Next** soft key.

10. Press the **T** soft key once. The cursor moves to **Span\_L**.

11. Press the **Input** soft key once.



Display the Span\_L setting window.

12. Enter 0.0 in the Span Lower box.

Select the input position: Press the **right arrow key** once to move the cursor in the text box to the right.

Delete the minus sign: Press the **up arrow key** once to delete the minus sign.

Delete the 2 and 0 in the same way.

Enter the input: Press **DISP/ENTER** once. **Span\_L** is set, and the cursor moves to **Span\_U**.

Cancel the setting: Press **ESC** before pressing **DISP/ENTER** (entering the input).

13. Enter 400.0 in the Span Upper box.

See step 12 for the procedure.

14. Press **DISP/ENTER** once. The changed items are entered, and the cursor returns to **First-CH**. The changed items change from yellow to white.

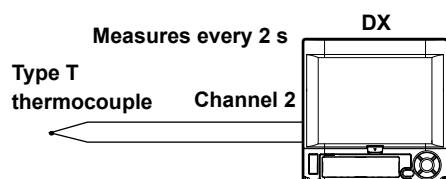
The screenshot shows a configuration screen with the following fields and values:

- GROUP 1
- 2008/12/01 10:36:39
- DISP 1hour
- First-CH: 002
- Last-CH: 002
- Range
- Mode: TC
- Range: T
- Span\_L: 0.0
- Span\_U: 400.0
- Alarm
- 1: Off
- 2: Off
- 3: Off
- 4: Off
- Input: +1 -1

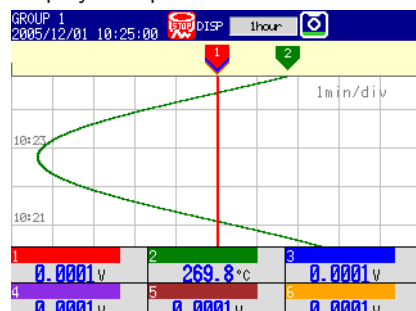
15. Press **ESC** three times or **MENU** twice to return to the operation mode screen.  
On a DX with advanced security (/AS1 option; release number 4 or later):  
Press **ESC** three times or **MENU** twice to display a confirmation screen. To return to the operation mode screen, select **Yes**, and press **DISP/ENTER** once.  
Operation complete.

## Operation Example in the Basic Setting Mode: Changing the Scan Interval

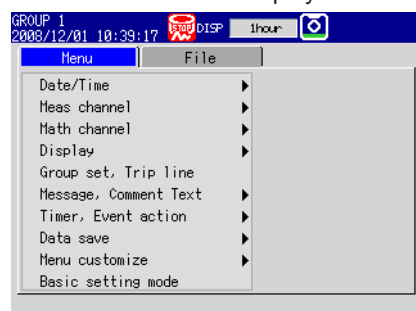
In this example, we will change the scan interval. Here, the scan interval on the DX1012 is changed to 2 s. The selectable scan intervals are different on the model, but the procedure is the same.



1. Display the operation mode screen.



2. Press **MENU** once to display the setting menu.

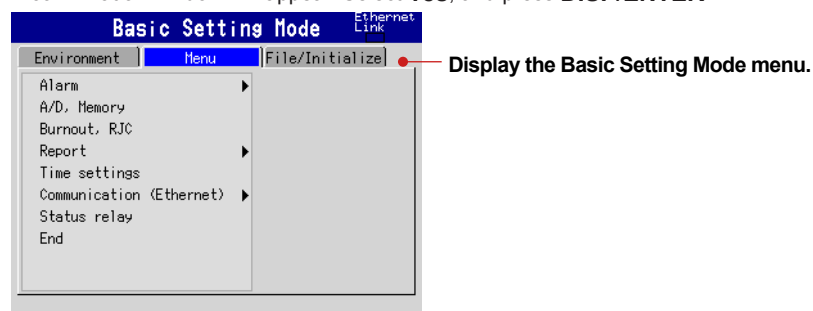


3. Hold down **FUNC** for at least 3 s.

Alternatively, you can execute the following procedure to switch to Basic Setting mode.

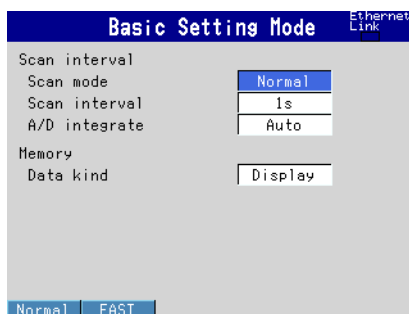
Use the **up or down arrow key** to select **Basic setting mode** on the **Menu** tab, and press **DISP/ENTER**.

A confirmation window will appear. Select **Yes**, and press **DISP/ENTER**.

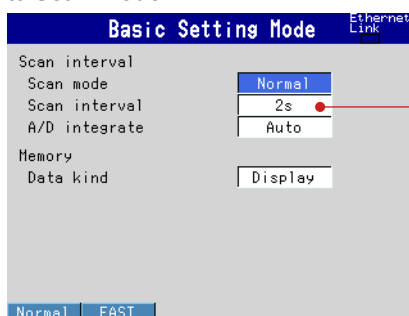




4. Press the **down arrow key** twice to select **A/D, Memory**.
5. Press **DISP/ENTER** once.

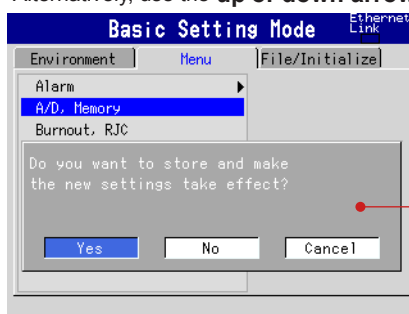


6. Press the **down arrow key** once to move the cursor to **Scan interval**.
7. Press the **2s** soft key once. The cursor moves to **A/D integrate**, and the changed item is displayed in yellow.  
Cancel the setting: Press **ESC** before pressing **DISP/ENTER**.
8. Press **DISP/ENTER** once. The changed items are entered, and the cursor returns to **Scan mode**.



Set the scan interval to 2 s.

9. Press **ESC** once to return to the basic setting mode menu.
10. Press **ESC** once more.  
Alternatively, use the **up or down arrow key** to select **End**, and press **DISP/ENTER**.



Display the confirmation window.

11. Press **DISP/ENTER** once. The settings are saved, and the DX returns to the operation mode screen.

Discard the changes:

Select **No** and press **DISP/ENTER**.

Do not end the basic setting mode:

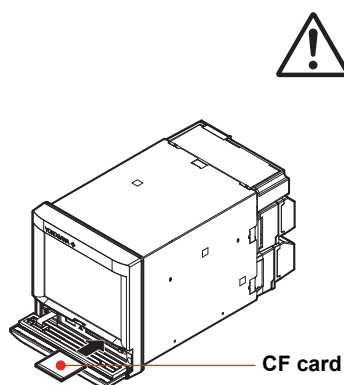
Select **Cancel** and press **DISP/ENTER**.

Operation complete.

## Inserting/Removing a CF Card

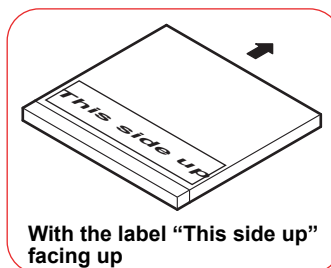
### Inserting a CF Card

1. Open the operation cover.

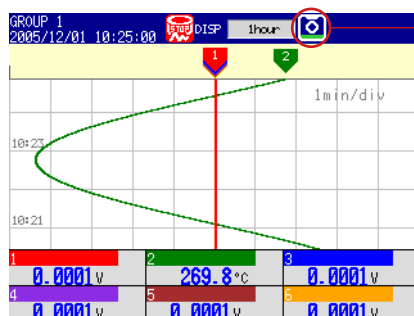


#### CAUTION

Forcing the CF card into the slot with the upside down may cause damage.



2. Insert the CF card into the slot.



Displays the CF card icon  
If the DX does not recognize the CF card, try reinserting it.

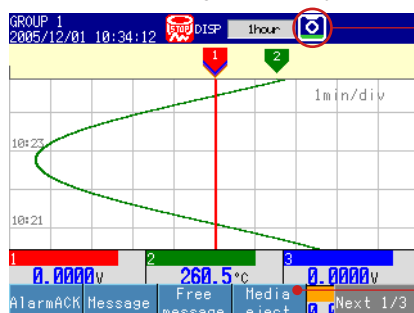
3. Close the operation cover.

Operation complete.

### Removing a CF Card

#### <Operations in the Operation Mode>

1. Press **FUNC** once.
2. Press the **Media eject** soft key once.

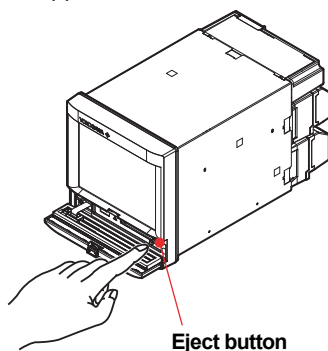


CF card icon

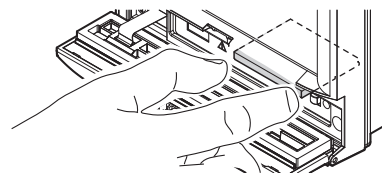
Media eject

3. Press the **CF** soft key once. The message "Media can be removed safely" appears. Displays the CF card icon in blue.
4. Open the operation cover.

5. Press the CF card eject button. When you eject the CF card, the CF card icon disappears.



Press the eject button in until it clicks.  
The eject button stops at depressed position.  
Pinch the left and right sides of the CF card  
and remove it.



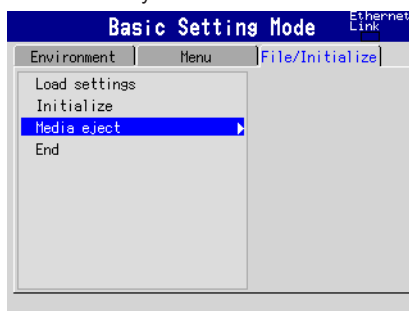
6. Close the operation cover.

Operation complete.

### <Operation in the Basic Setting Mode>

1. Press **MENU** (to switch to setting mode), hold down **FUNC** for 3 s (to switch to basic setting mode), select the **File/Initialize** tab > **Media eject** > **CF** \*, and press **DISP/ENTER**.

\* Select **CF** if you have a choice between **CF** and **USB**.



The message "Media can be removed safely" appears.

2. Open the operation cover.
3. Press the CF card eject button. Remove the CF card.
4. Close the operation cover.

Operation complete.

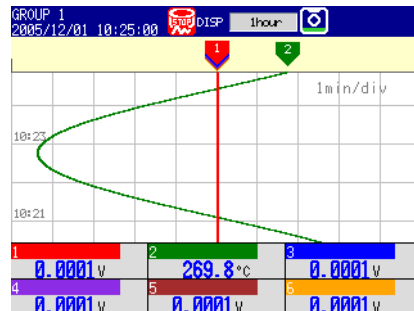
### **Note**

If you remove the CF card without carrying out the media eject procedure, the message "Media was removed compulsorily" appears. Remove the CF card by carrying out the procedure above to prevent damaging the data that is stored.

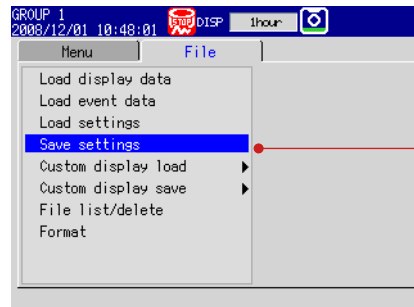
## Saving the Setup Data

In this example, we will save the setup data to a file named "SF2" on the CF card.

1. Display the operation mode screen.

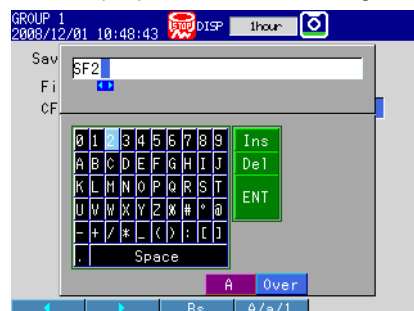


2. Press **MENU** once to display the setting menu.
3. Press the **right arrow key** once to select the **File** tab.
4. Press the **down arrow key** four times.



Select Save settings.

5. Press **DISP/ENTER** once.
  6. Press the **Input** soft key once.
  7. Enter "SF2" for the file name.
- For the input procedure, see "Entering Values and Characters" on page 17.



8. Press **DISP/ENTER** once. The message "Data are being saved to media" appears, and the setup data is saved.
  9. Press **ESC** or **MENU** twice to return to the operation mode screen.
- On a DX with advanced security (/AS1 option; release number 4 or later):  
Press **ESC** or **MENU** twice to display a confirmation screen. To return to the operation mode screen, select **Yes**, and press **DISP/ENTER** once.

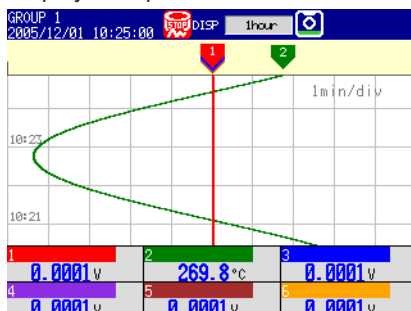
Operation complete.

## Loading the Setup Data

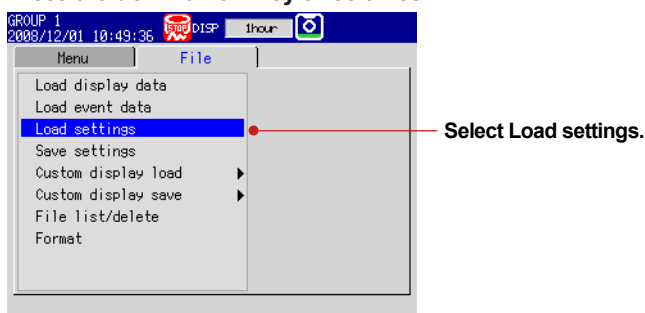
In this example, we will load the setup data "SF2" from the CF card and update the DX settings.

This procedure only loads the setup data that the DX uses for setting mode. To load the setup data for both setting mode and basic setting mode, press **MENU**, hold down **FUNC** for 3 s, select the **File/Initialize** tab > **Load settings**, and press **DISP/ENTER**.

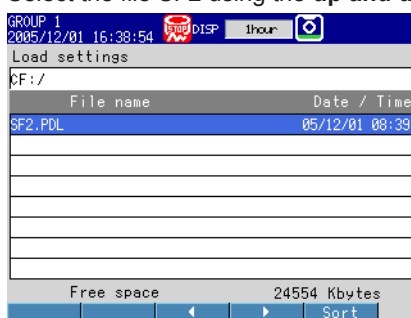
1. Display the operation mode screen.



2. Press **MENU** once to display the setting menu.
3. Press the **right arrow key** once to select the **File** tab.
4. Press the **down arrow key** three times.



5. Press **DISP/ENTER** once to select the root directory (CF:/).
6. Press **DISP/ENTER** once to display the files in the root directory.
7. Select the file SF2 using the **up and down arrow keys**.



To move to a lower directory  
Select the directory, and press  
**DISP/ENTER**.

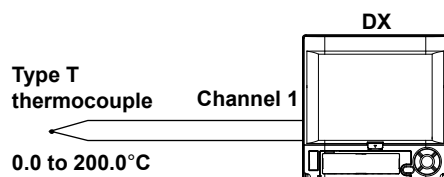
To move to a higher directory  
Press **ESC**.

8. Press **DISP/ENTER** once. The message "File is being loaded from media" appears, and the setup data is loaded. The DX automatically returns to the operation mode screen.

Operation complete.

# Setting the Input Range and Alarm

## Setup Example 1: Temperature Measurement Channel

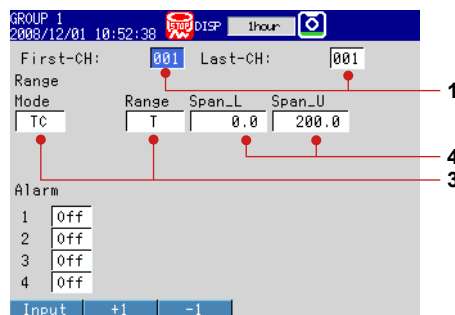


Setup Item	Description	Number in the Figure
Channel	Use channel 1.	1
Tag	TI-001	2
Sensor	Type T thermocouple	3
Input range	0.0 to 200.0°C	4

### (1) Input Range

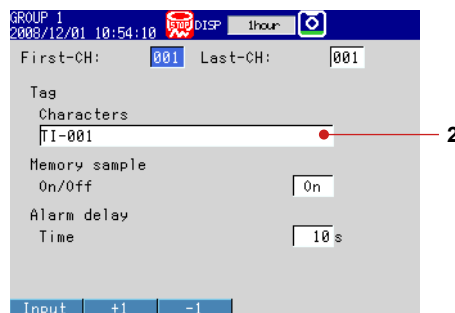
Press **MENU** (switch to the setting mode).

Select the **Menu** tab > **Meas channel** > **Range, Alarm**.



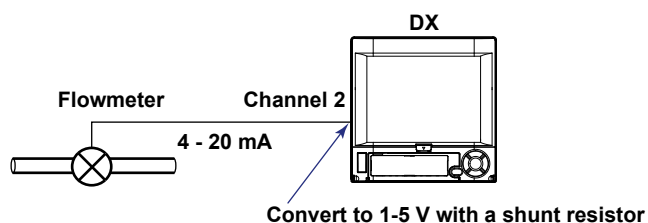
### (2) Tag

Select the **Menu** tab > **Meas channel** > **Tag, Memory, Delay**.



Operation complete.

## Setup Example 2: Flow Rate Measurement Channel and Alarm

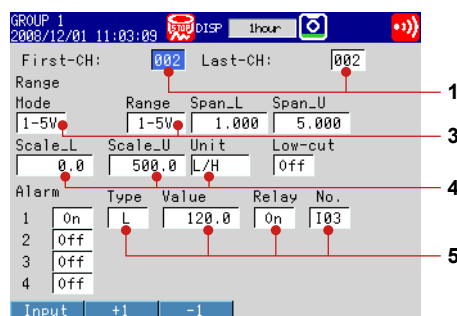


Setup Item	Description	Number in the Figure
Channel	Use channel 2.	1
Tag	FI-002	2
Input signal	1-5V	3
Input range	0.0 to 500.0 L/H	4
Alarm condition	Output an alarm if the measured value is less than or equal to 120.0 L/H. Output destination: Relay contact (I03)	5

### (1) Input Range and Alarm

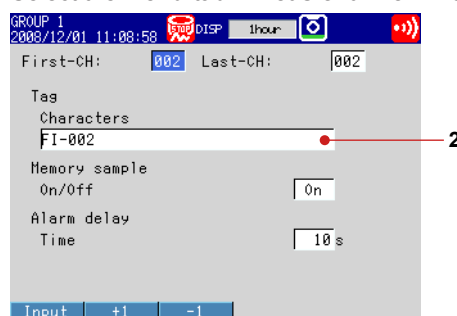
Press **MENU** (switch to the setting mode).

Select the **Menu** tab > **Meas channel** > **Range, Alarm**.



### (2) Tag

Select the **Menu** tab > **Meas channel** > **Tag, Memory, Delay**.

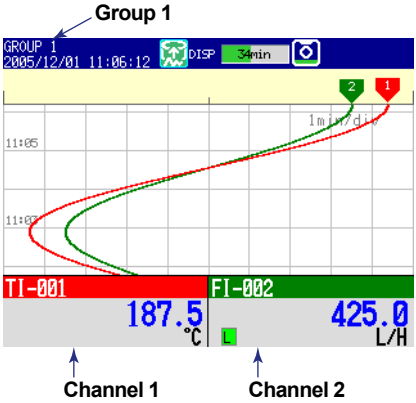


Operation complete.

# Setting the Display

## Setup Example 3: Assigning Channels to Groups

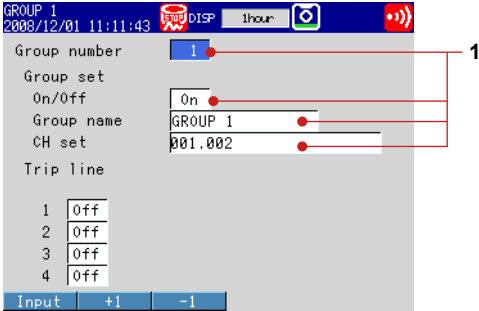
In this example, we will assign channels 1 and 2 to group 1.



Setup Item	Description	Number in the Figure
Group	Assign channel 1 and 2 to group 1.	1

### (1) Group

Press **MENU** (to switch to setting mode) > select the **Menu** tab > **Group set, Trip line**.

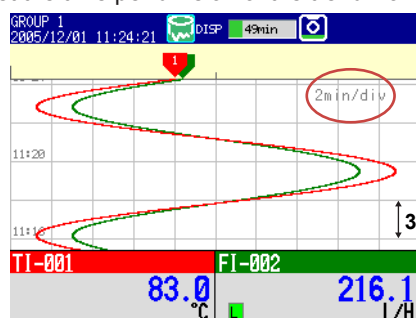


Operation complete.



## Setup Example 4: Setting the Time Scale

Set the time per division of the trend waveform to 2 minutes.

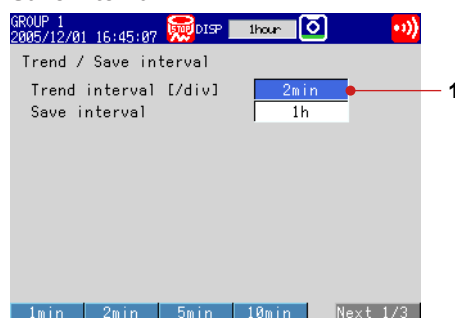


The sampling interval (the time corresponding to 1 dot) is 4 s when the trend interval is 2 min.  
 $30 \text{ dots} \times 4 \text{ s} = 2 \text{ min}$

Setup Item	Description	Number in the Figure
Trend interval	Set the time per division to 2 minutes. The waveform is updated at every 4 s.	1

### (1) Trend interval

Press **MENU** (to switch to setting mode) > select the **Menu** tab > **Display** > **Trend/Save interval**.



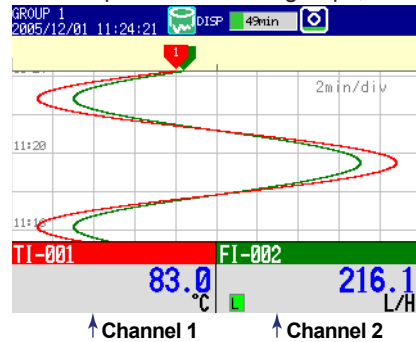
Operation complete.

## Setting the Data Storage

## Setup Example 5: Continuously Record Measured Data and Automatically Save

In this example, we will continuously record and save the measured data of channel 1 and 2.

For the procedure to set the channel, see “Setting the Input Range and Alarm” on page 28. For the procedure to set groups, see “Setting the Display” on page 30.



**Automatically save to the CF card periodically.**

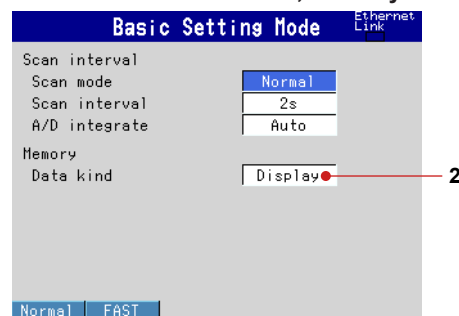


Setup Item	Description	Number in the Figure
Source channels	Channel 1 (TI-001) and channel 2 (FI-002)	1
Data to be recorded	Continuously record the display data from the start of the measurement.	2
Data storage method	Automatically store every 24 hours.	3
Sampling interval	4 seconds. Set using the trend interval. Sampling interval = (trend interval setting)/30 dots * * 40 dots when the trend interval is set to 5 or 10 seconds.	4
Data file name	Add "sample" to the file name. Example: <u>000123</u> _sampleYYMMDD_HHMMSS.DAD ↑                                  ↑ Sequential number  Date/Time of the first recorded data	5
Save Destination Directory	DATA-101	6

### (1) Data to be Recorded

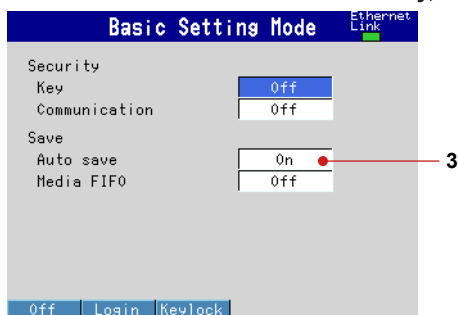
Press **MENU** (switch to the setting mode), hold down **FUNC** for 3 s (switch to the basic setting mode).

Select the **Menu** tab > **A/D, Memory**.



**(2) Method of Storing to the CF Card (Auto Save ON/OFF)**

Select the **Environment** tab > **Security, Media save**

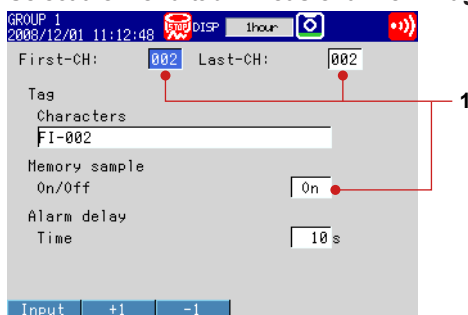
**(3) Save the Settings**

1. Press **ESC** to return to the basic setting menu.
2. Press **ESC** once more.  
The window appears for you to confirm the saving of the settings.
3. Select **Yes** and press **DISP/ENTER**. The DX returns to the operation mode screen.

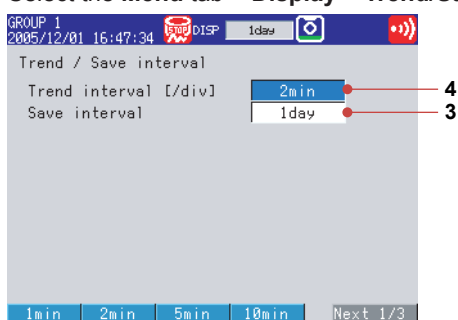
**(4) Channels to Be Recorded**

Press **MENU** (switch to the setting mode).

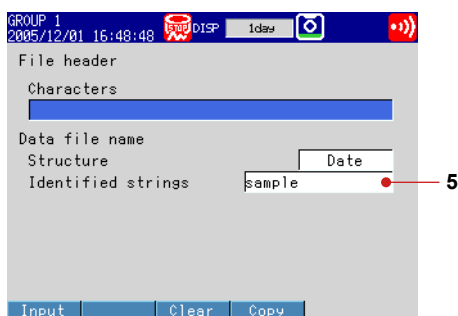
Select the **Menu** tab > **Meas channel** > **Tag, Memory, Delay**.

**(5) Interval for Saving the Data to the CF Card**

Select the **Menu** tab > **Display** > **Trend/Save interval**.

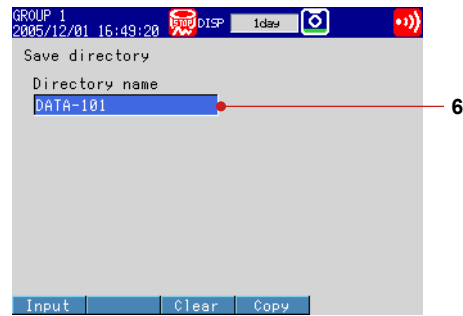
**(6) Data File Name**

Select the **Menu** tab > **Data save** > **File header, File name**.



### (7) Save Destination Directory (within the CF Card)

Select the **Menu** tab > **Data save** > **Save directory**.



Operation complete.

## Setup Example 6: Saving Measured Data at the Specified Time

Using the settings of Setup Example 5, we will save the measured data once at hour 0 every day.



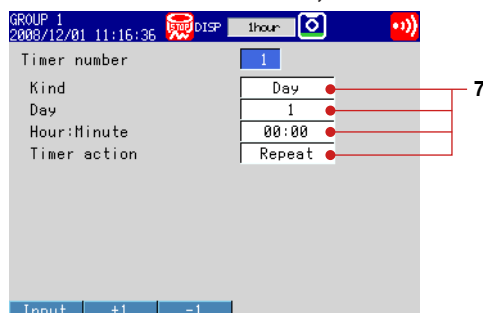
All settings other than those listed below are the same as Setup Example 5.

Setup Item	Description	Number in the Figure
Data storage time	Save the data once at hour 0 every day.	7
Data storage method	Automatically save the measured data at the specified time.	8

### (1) Setting the Time

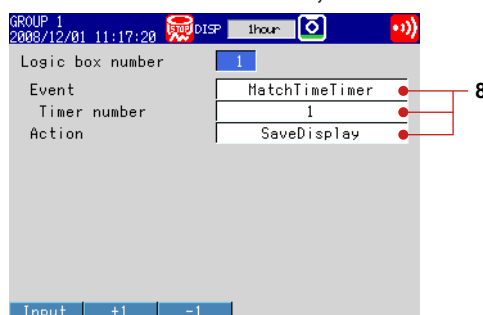
Press **MENU** (switch to the setting mode).

Select the **Menu** tab > **Timer, Event action** > **Match time timer**.



### (2) Specifying the Data Storage

Select the **Menu** tab > **Timer, Event action** > **Event action**.

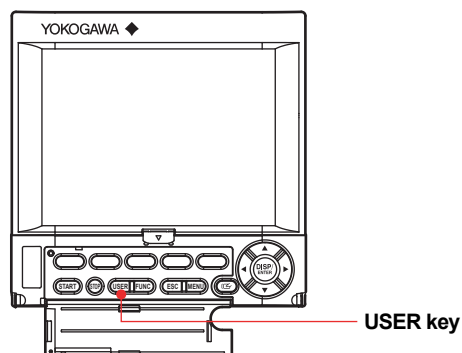


Operation complete.

# Customizing the Operation

## Setup Example 7: Assigning the Screen Image Data Storage Function to the USER Key

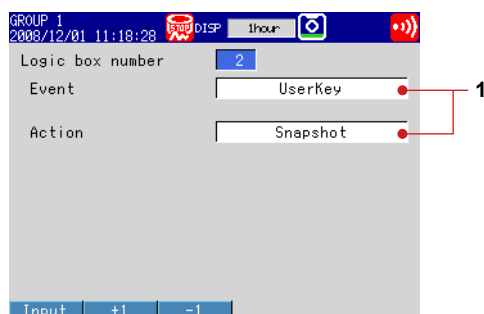
In this example, we will set the DX so that the displayed screen image data can be saved to the CF card by pressing the USER key. This function is called *snapshot*. The extension of snapshot data files is .png.



Setup Item	Description	Number in the Figure
Event action	Save the screen image data of the DX using the USER key.	1

### (1) Assigning an Action to the USER Key

Press **MENU** (to switch to setting mode) > select the **Menu** tab > **Timer, Event action** > **Event action**.

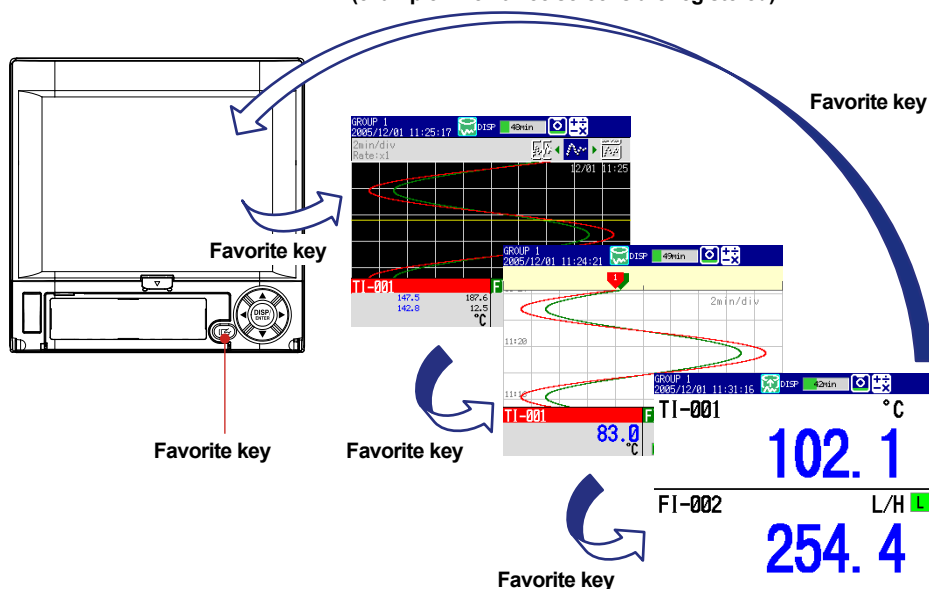


Operation complete.

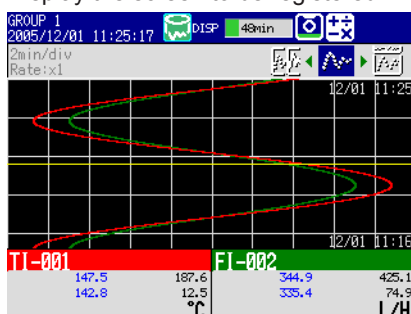
## Setup Example 8: Registering Frequently Used Screens to the Favorite Key

Up to eight operation mode screens that are frequently used can be registered to the Favorite key. This enables you to monitor the operation by using only the Favorite key. This feature is convenient when comparing data such as historical trends.

Operation mode screens registered to the Favorite key  
(example when three screens are registered)



1. Display the screen to be registered.



2. Press **FUNC** once to display the FUNC key menu.
3. Press the **Next** soft key to display Favorite regist.
4. Press the **Favorite regist** soft key to display the registration list window.



Show the registration list window.

5. Press the favorite number (1 to 8) soft key.
6. Press the **Regist** soft key.



Show the window for entering the display name.

7. Enter the screen name.
    - Select the input position: **Left and right arrow soft keys**
    - Enter characters: **Arrow keys and DISP/ENTER**
    - Delete a character: Use the **arrow keys** to select **Del** and press **DISP/ENTER**, or press the **Bs** soft key.
    - Enter the input: Use the **arrow keys** to select **ENT** and press **DISP/ENTER**.
    - Cancel the setting: Press **ESC** before pressing **DISP/ENTER**.
    - For the input procedure, see "Entering Values and Characters" on page 17.
  8. Press **DISP/ENTER** once.
  9. Repeat steps 1 to 8 to register up to eight screens.
- Operation complete.



# Operation

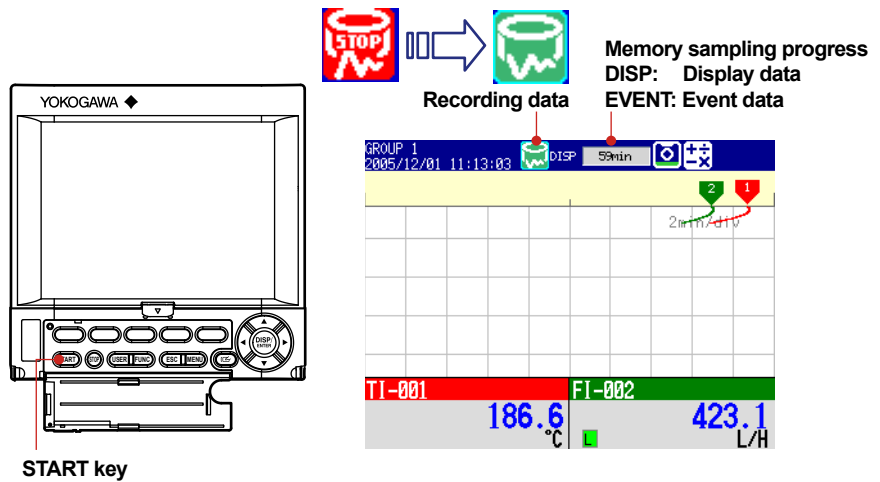
## Starting Memory Sampling

1. Press **START** once.

On a DX with advanced security (/AS1 option; release number 4 or later) display the start recording screen\*. With **START** selected, press **DISP/ENTER** once.

Memory sampling starts.

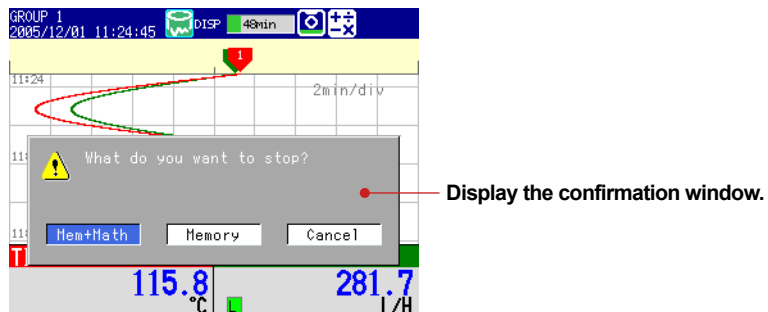
\* This is because the Batch function is enabled upon shipment from the factory.



Operation complete.

## Stopping Memory Sampling

1. Press **STOP** once.



2. Select **Mem+Math** or **Memory** using the **left and right arrow keys**.

**Memory:** Stops memory sampling.

**Mem+Math:** Stops memory sampling and computation (option).

On models without the computation function (option), the confirmation message "Do you want to stop data storage?" appears. Select **Yes**.

3. Press **DISP/ENTER** once.

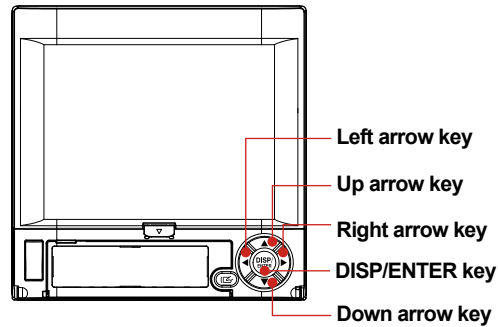


Stop memory sampling.

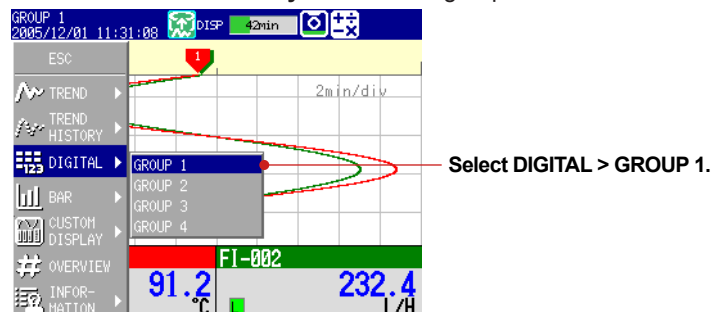
Operation complete.

## Switching the Trend Display, Digital Display, and Bar Graph Display

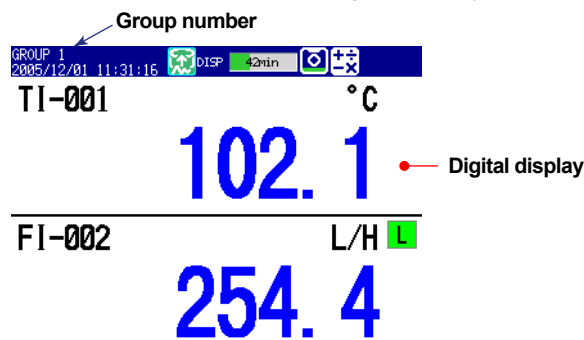
1. Press **DISP/ENTER** once to show the display selection menu.



2. Press the **down arrow key** to select **TREND**, **DIGITAL**, or **BAR**.
3. Press the **right arrow key** once to display the sub menu. To close the sub menu that you opened, press the **left arrow key**.
4. Press the **down arrow key** to select the group.



5. Press **DISP/ENTER** once to show the operation display of the selected group. To close the menu without switching the display, press **ESC**.



Operation complete.

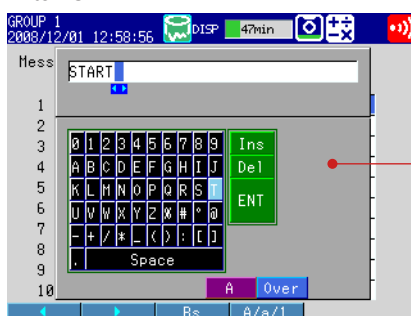
Press the **down arrow key** when the trend, digital, or bar graph is displayed to switch the display in the order trend, digital, bar graph, trend, and so on. Press the **up arrow key** to switch the display in reverse order. Press the **right arrow key** or the **left arrow key** to switch the group.

## Writing the Message “START”

### Registering the Word “START” in Message Number 1

On a DX with advanced security (/AS1 option; release number 4 or later), this operation is only available when memory sampling is stopped.

1. Press **MENU** (to switch to setting mode) > select the **Menu** tab > **Message**, **Comment** > **Message** > **DISP/ENTER**.
2. Press the **1-10** soft key.  
The message, “Message numbers 1-10 can also be used for free message” appears. Press **DISP/ENTER**.
3. Press the **down arrow key**. With **message 1** selected, press the **Input** soft key.  
Enter “START”.



Show the message registration window.

Select the input position: **Left and right arrow soft keys**

Enter characters: **Arrow keys and DISP/ENTER**

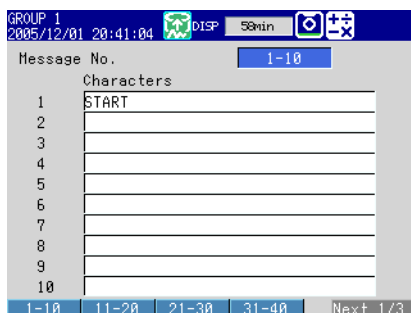
Delete a character: Use the **arrow keys** to select **Del** and press **DISP/ENTER**, or press the **Bs** soft key.

Enter the input: Use the **arrow keys** to select **ENT** and press **DISP/ENTER**.

Cancel the setting: Press **ESC** before pressing **DISP/ENTER**.

For the input procedure, see “Entering Values and Characters” on page 17.

4. Press **DISP/ENTER**.



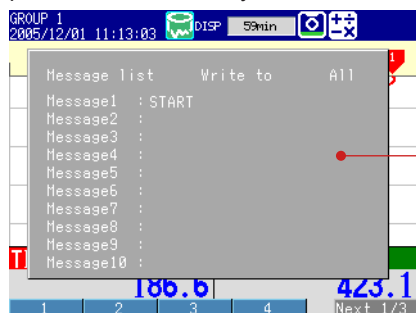
5. Press **ESC** three times or **MENU** twice to return to the operation mode screen.  
On a DX with advanced security (/AS1 option; release number 4 or later):  
Press **ESC** three times or **MENU** twice to display a confirmation screen. To return to the operation mode screen, select **Yes**, and press **DISP/ENTER** once.

Operation complete.

## Writing Message Number 1 “START”

This operation can only be carried out while memory sampling is in progress. The message is displayed on the trend display. Show the trend display first.

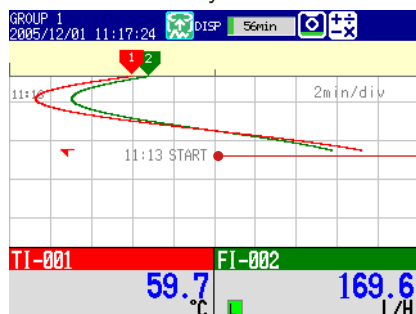
1. Press **FUNC** (display the FUNC key menu), press the **Message** soft key, and press the **1-10** soft key.



Show the message registration window.

1 soft key

2. Press the **1** soft key.



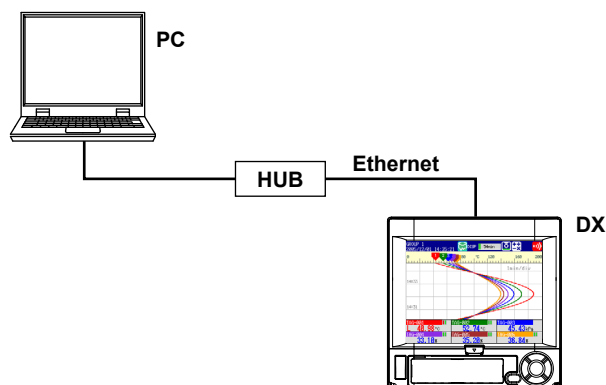
Shows the message.  
(time, message, and message mark)  
Also recorded to the internal memory.

Operation complete.

# Connecting to an Ethernet Network

## Setup Example 9: Monitoring the DX on a PC Browser

In this example, we will connect the PC and the DX via hub in a one-to-one relationship and display and monitor the DX screen on a browser on the PC.



### DX

Setup Item	Description	Number in the Figure
IP address	192.168.1.101	1
Subnet mask	255.255.255.0	
Web server function	Monitor from a Web browser on the PC using operator page.	2
Access to the DX	Display the Web page and do not set access privileges.	3

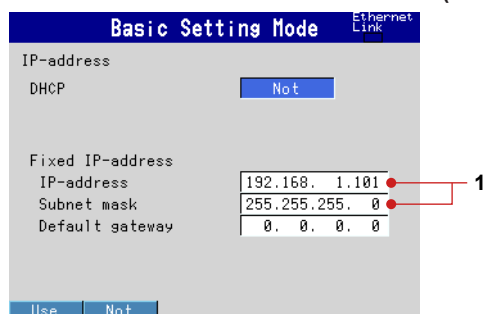
### PC

Setup Item	Description	Number in the Figure
IP address	192.168.1.100	4
Subnet mask	255.255.255.0	

### (1) IP Address of the DX

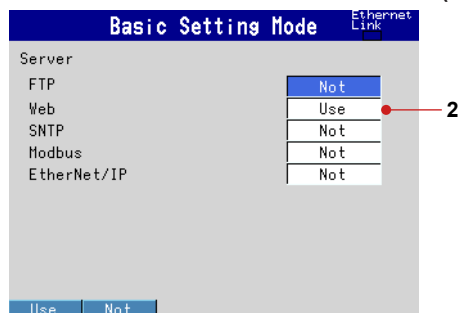
Press **MENU** (switch to the setting mode), hold down **FUNC** for 3 s (switch to the basic setting mode).

Select the **Menu** tab > **Communication (Ethernet)** > **IP-address**.



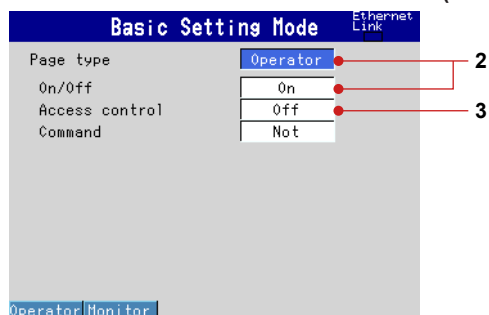
### (2) Enabling the Web Server Function on the DX

Select the **Menu** tab > **Communication (Ethernet)** > **Server** > **Server**.



### (3) Display the DX Screen on the PC

Select the **Menu** tab > **Communication (Ethernet)** > **Web page**.

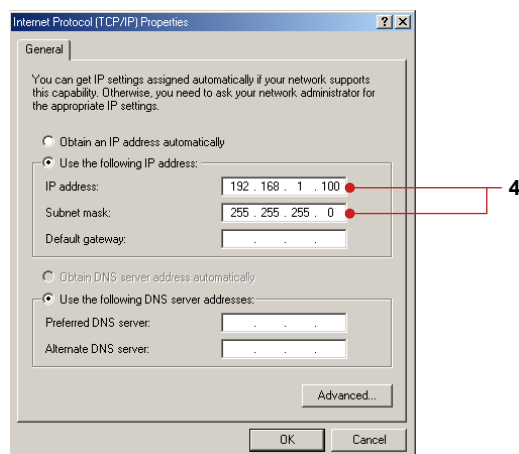


### (4) Save the Settings

1. Press **ESC** twice to return to the basic setting menu.
2. Press **ESC** once more.  
The window appears for you to confirm the saving of the settings.
3. Select **Yes** and press **DISP/ENTER**.  
The DX returns to the operation mode screen.

### (5) Setting the PC

Set the IP address and subnet mask on the PC.



**(6) Checking the Connection**

Send the command below from the PC and check that a correct response is returned.

Send

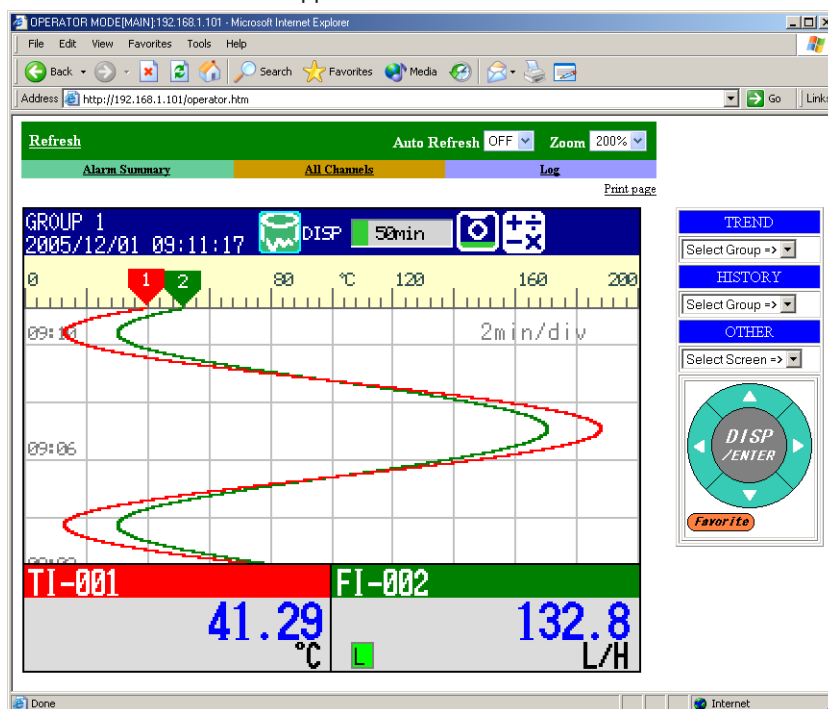
>ping 192.168.1.101

Response example

>Reply from 192.168.1.101: bytes=32 time<10ms TTL=255

**(7) Displaying the DX Screen on the Browser**

1. Start the browser on the PC.
2. Enter the following URL.  
<http://192.168.1.101/operator.htm>
3. Check that the DX screen appears.

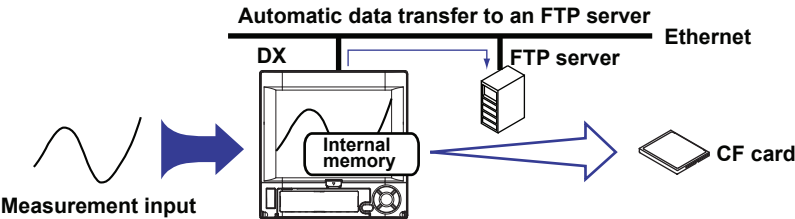


Operation complete.

Setup Example 10: Automatically Transferring the Measured Data File to an FTP Server

In this example, we will configure the DX so that the measured data is automatically transferred to an FTP server on the network when the measured data is automatically saved to the CF card. To automatically transfer the measured data files and report files, the auto saving of the measured data must be configured in advance (“Data storage method” of Example 5).

This example assumes that the following network environment is used: DHCP enabled, automatically obtain the DNS server information, and automatically register the DX host name to the DNS server. Set the parameters according to your network environment.

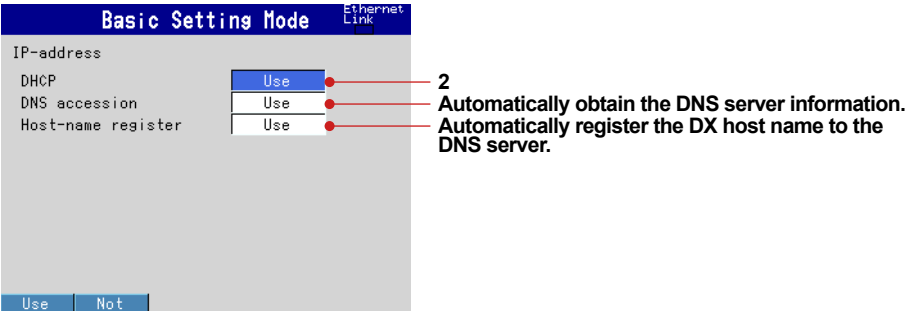


Setup Item	Description	Number in the Figure
Host name	DAQSTATION1	1
Obtain the IP address	Obtain automatically (DHCP)	2
Type of data to be transferred	Acquired measured data	3
FTP server	Server name    abcdefg.co.jp	4
	Port number    21	
	Login name    ftpuser1	
	Password      a1234	

(1) IP Address of the DX

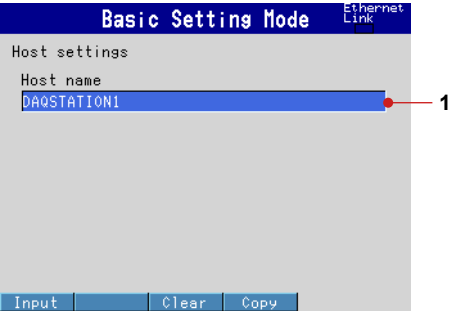
Press **MENU** (switch to the setting mode), hold down **FUNC** for 3 s (switch to the basic setting mode).

Select the **Menu** tab > **Communication (Ethernet)** > **IP-address**.



(2) Host Settings Address of the DX

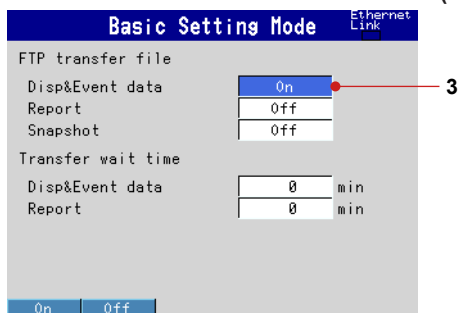
Select the **Menu** tab > **Communication (Ethernet)** > **Host settings**.



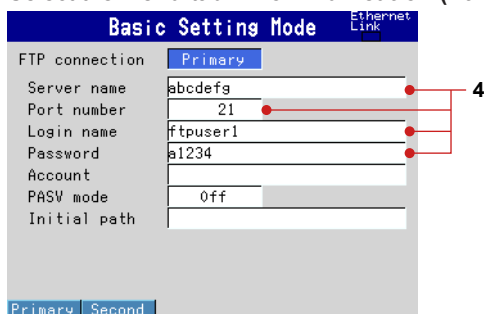


**(3) Data to Be Transferred to the FTP Server**

Select the **Menu** tab > **Communication (Ethernet)** > **FTP client** > **FTP transfer file**.

**(4) Connected setting FTP Server**

Select the **Menu** tab > **Communication (Ethernet)** > **FTP client** > **FTP connection**.

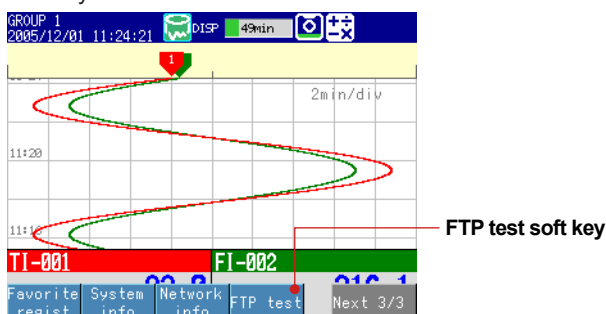
**(5) Save the Settings**

1. Press **ESC** three times to return to the basic setting menu.
2. Press **ESC** once more.  
The window appears for you to confirm the saving of the settings.
3. Select **Yes** and press **DISP/ENTER**.  
The DX returns to the operation mode screen.

Operation complete.

**Executing a File Transfer Test**

1. Press **FUNC** once to display the FUNC key menu.
2. Press the **Next** soft key until FTP test is displayed, and then press the **FTP test** soft key.



3. Press the **Primary** soft key. The messages "FTP test is being executed" and "Execution is complete" appear and the test file (FTP\_TEST.TXT) is sent to the FTP server.

Operation complete.

**Transferring the Data Files**

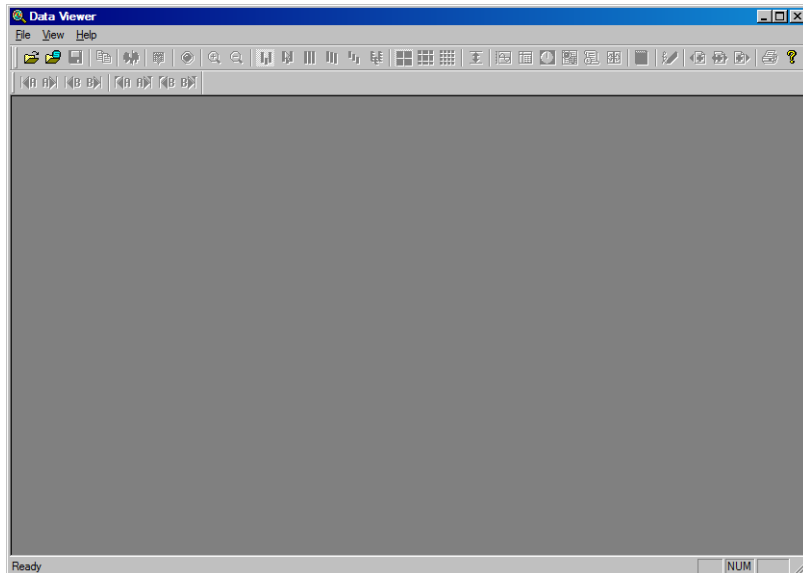
When you start memory sampling, the measured data file is transferred to the FTP server when the data is saved to the CF card.

# Using DAQSTANDARD

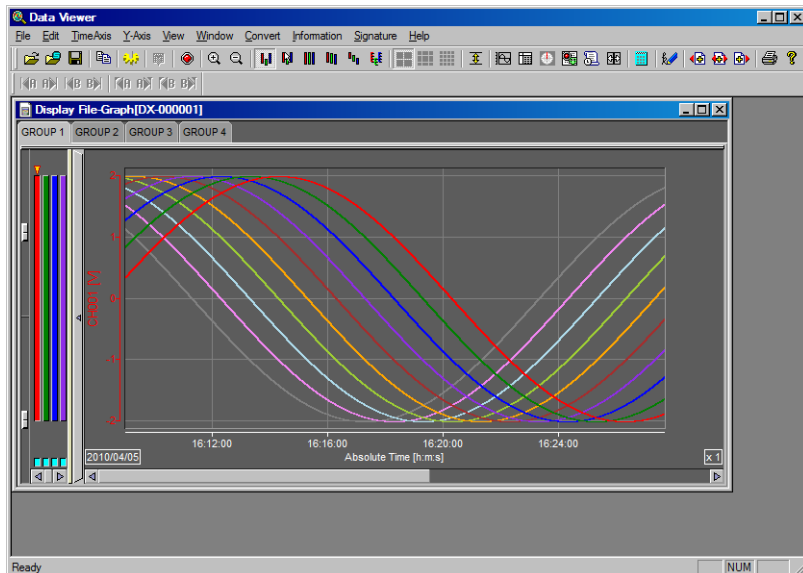
## Displaying the Measured Data on DAQSTANDARD

In this example, we will display the measured data using the accompanying software program, DAQSTANDARD.

1. Insert the CF card containing the measured data file into the PC that has DAQSTANDARD installed.
2. Start DAQSTANDARD Viewer.



3. From the **File** menu, choose **Open**.
4. In the Open dialog box, select the desired file, and click **Open**.  
The data is displayed.



Operation complete.

# Installation and Wiring

## Installation Location

Install the DX indoors in a location that meets the following conditions.

- **Instrumentation Panel**

The DX is designed to be installed in an instrumentation panel except for the desktop type.

- **Well-Ventilated Location**

To prevent overheating, install the DX in a well-ventilated location. For the panel cut dimensions when arranging multiple DXs, see the page 51. Follow the panel cut dimensions providing adequate space between instruments when other instruments are arranged on the panel. For the desktop type, we recommend that a space of at least 50 mm be provided around the left, right, top, and rear panels of the DX.

- **Minimum Mechanical Vibrations**

Choose an installation location with the minimum mechanical vibration. Installing the DX in a location with large mechanical vibration not only causes adverse effects on the mechanism but also may hinder normal recording.

- **Horizontal**

Install the DX horizontally (However, the DX can be inclined up to 30 degrees backwards for panel mounting).

### **Note**

Condensation may occur if the DX is moved to another place where the ambient temperature is higher, or if the temperature changes rapidly. In addition, measurement errors will result when using thermocouples. If this happens, let the DX adjust to the new environment for at least one hour before using it.

Do not install the DX in the following places.

- **Outdoors**

- **In Direct Sunlight or Near Heat Sources**

Install the DX in a place with small temperature fluctuations near room temperature (23°C). Placing the DX in direct sunlight or near heat appliances can cause adverse effects on the internal circuitry.

- **Where an Excessive Amount of Soot, Steam, Moisture, Dust, or Corrosive Gases Are Present**

Soot, steam, moisture, dust, and corrosive gases will adversely affect the DX. Avoid such locations.

- **Near Strong Magnetic Field Sources**

Do not bring magnets or instruments that produce electromagnetic fields close to the DX. Operating the DX in strong magnetic fields can cause errors in the measurements.

- **Where the Viewing of the Display Is Poor**

The DX uses a TFT color LCD for the display. Therefore, viewing of the display from an extreme angle is difficult. Install the DX so that the user can view the display from the front.

## Installation Procedure

### Installation Procedure (Panel Mount Type)

Use a steel panel of thickness 2 mm to 26 mm.

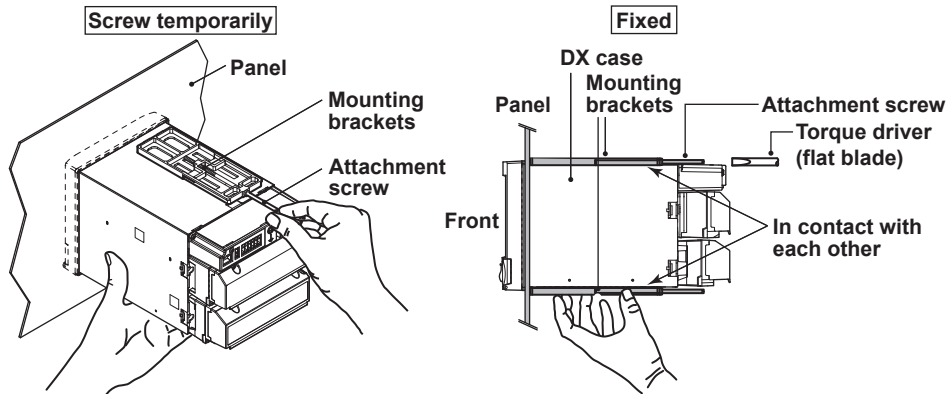
1. Insert DX from the front of the panel.
2. Mount the DX to the panel using the mounting brackets that come with the package as shown in the figure below.
  - Use two brackets to support the top and bottom or the left and right sides of the case (remove the seal that is covering the holes for the mounting brackets beforehand).
  - The proper torque for tightening the mounting screws is 0.7 to 0.9 N•m.
  - Mount the DX to the rack according to the procedure below.
    - First, attach the two mounting brackets and temporarily fasten the attachment screws.
    - Next, fix the DX in place by tightening the attachment screws with the appropriate torque. When the DX is approximately perpendicular to the panel as you fasten the screws, press the mounting bracket against the case so that they are in contact with each other.



### CAUTION

- Tightening the screws too much can deform the case or damage the bracket.
- Be careful not to insert foreign objects or tools through the holes for the mounting brackets in the case.

### Panel Mounting Diagram



(The figure shows the case when the mounting brackets are used on the top and bottom of the case.)

### Note

To achieve sufficient dust and water proof performance, mount the DX in the middle of the panel cut out.

### Installation (Desktop Type (/H5[ ] Option))

The front (leg) stand can be pulled out.

### CAUTION

On the desktop type, do not apply force to the DX when the front leg (stand) is out. This can break the front leg.

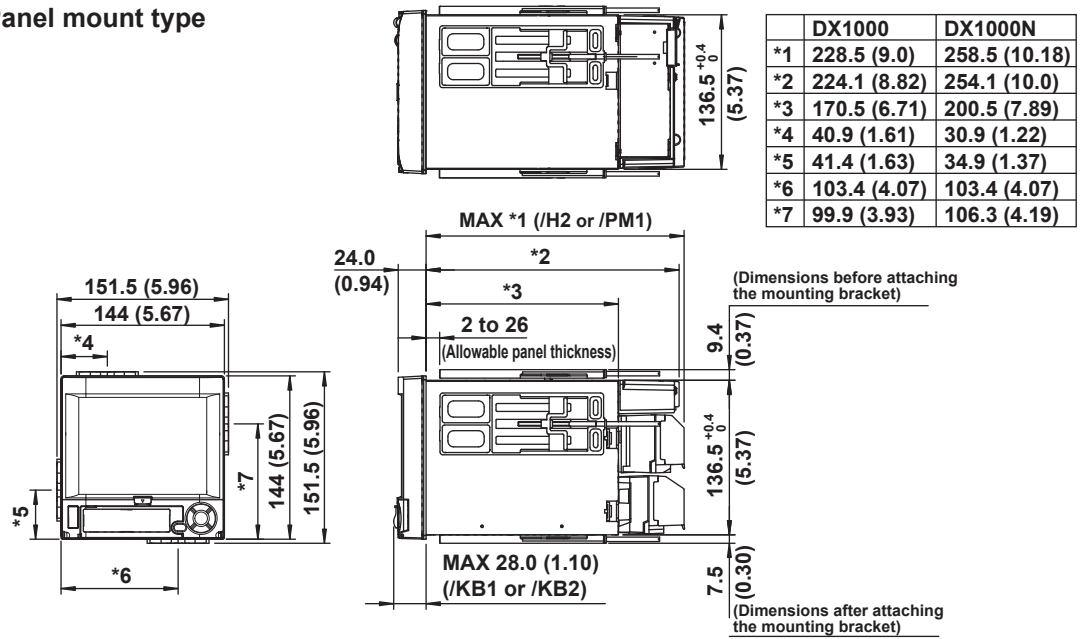
## External Dimensions and Panel Cut Dimensions

Unit: mm (approx. inch)

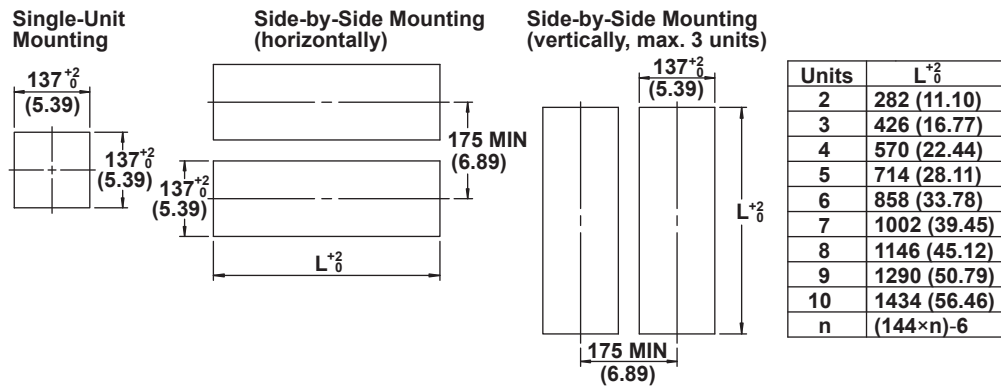
Unless otherwise specified, tolerance is  $\pm 3\%$

(however, tolerance is  $\pm 0.3$  mm when below 10 mm).

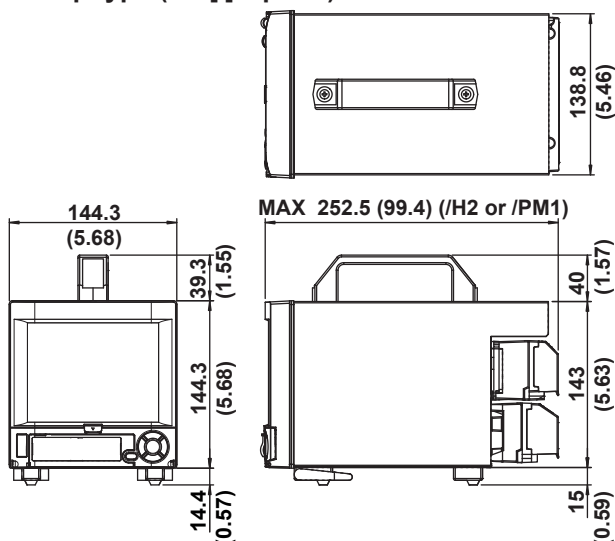
### Panel mount type



### Panel cut dimensions



### Desktop type (/H5[ ] Option)



## Input Signal Wiring



### WARNING

- To prevent electric shock while wiring, ensure that the power supply source is turned OFF.

### CAUTION

- If a strong tension is applied to the cable wired to the DX, the terminals of the DX and/or the cable can be damaged. In order to prevent tension from being applied directly on the terminals, fasten all wiring cables to the rear of the mounting panel.
- To prevent fire, use signal wires having a temperature rating of 70°C or more.
- Do not apply a voltage exceeding the following value to the input terminals. Otherwise, damage to the DX may result.
  - Maximum input voltage:  $\pm 60$  VDC
  - Maximum common mode voltage:  $\pm 60$  VDC (under measurement category II conditions)
- The DX is a product of installation category II.

### Precautions to Be Taken While Wiring

Take the following precautions when wiring the input signal cables.

**When using a screw terminal, we recommend that you use a crimp-on lug with an insulation sleeve (designed for 4-mm screws).**



Crimp-on lug with insulation sleeves (for 4 mm screws)

**When using a clamp terminal (/H2), we recommend that you use the following kind of cable:**

- Conductive cross-sectional area: 0.08 mm<sup>2</sup> to 1.5 mm<sup>2</sup> (AWG 28 to 16)
- Length of the stripped section of the wire: Approx. 7 mm

**Take measures to prevent noise from entering the measurement circuit.**

- Move the measurement circuit away from the power cable (power circuit) and ground circuit.
- It is desirable that the object being measured does not generate noise. However, if this is unavoidable, isolate the measurement circuit from the object. Also, ground the object being measured.
- Shielded wires should be used to minimize noise caused by electrostatic induction. Connect the shield to the ground terminal of the DX as necessary (make sure you are not grounding at two points).
- To minimize noise caused by electromagnetic induction, twist the measurement circuit wires at short, equal intervals.
- Make sure to earth ground the protective ground terminal through minimum resistance (less than 100  $\Omega$ ).

**When using internal reference junction compensation on the thermocouple input, take measures to stabilize the temperature at the input terminal.**

- Always use the terminal cover.
- Do not use thick wires which may cause large heat dissipation (cross sectional area of 0.5 mm<sup>2</sup> or less recommended).
- Make sure that the ambient temperature remains reasonably stable. Large temperature fluctuations can occur if a nearby fan turns ON or OFF.

**Connecting the input wires in parallel with other devices can cause signal degradation, affecting all connected devices. If you need to make a parallel connection, then**

- Turn the burnout detection function OFF.
- Ground the instruments to the same point.
- Do not turn ON or OFF another instrument during operation. This can have adverse effects on the other instruments.
- RTDs cannot be wired in parallel.

Wiring Procedure

A terminal cover is screwed in place on the measuring input terminal block on the rear panel. A label indicating the terminal arrangement is affixed to the cover.

- 1. Turn OFF the DX and remove the terminal cover.
- 2. Connect the signal wires to the terminals.

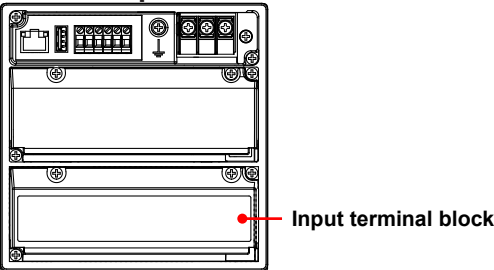
Recommended torque for tightening the screws	Screw terminals	0.9 to 1.0 N•m
	Clamped terminals	0.22 to 0.25 N•m

- 3. Replace the terminal cover and fasten it with screws. The proper torque for tightening the screws is 0.6 N•m.

Note

Input signal wires of diameter less than or equal to 0.3 mm may not be secured firmly for clamped terminals (/H2). Fold over the conducting section of the wire, for example, to make sure that the wire is securely connected to the clamped terminal.

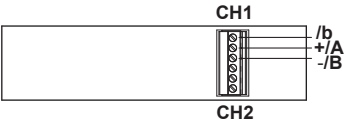
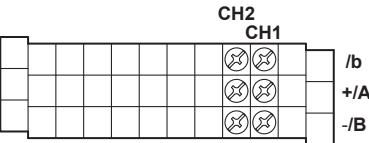
Arrangement of the Input Terminals



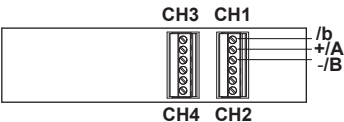
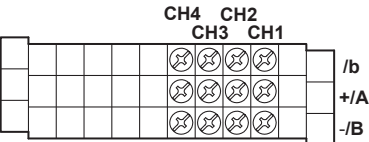
Screw terminal

Clamp terminal

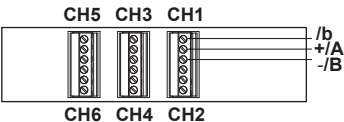
Input terminal block of the DX1002 and DX1002N



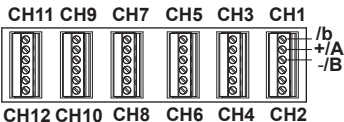
Input terminal block of the DX1004 and DX1004N



Input terminal block of the DX1006 and DX1006N

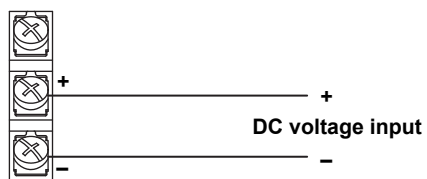


Input terminal block of the DX1012 and DX1012N

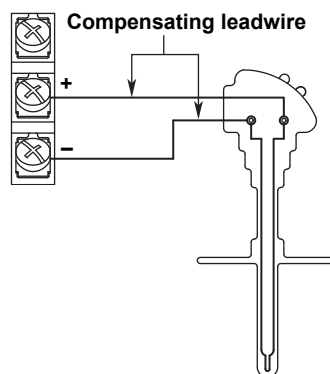


## Wiring Screw Terminals

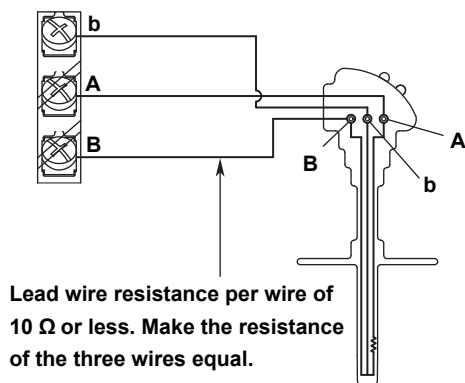
DC voltage input/DI (ON/OFF) input



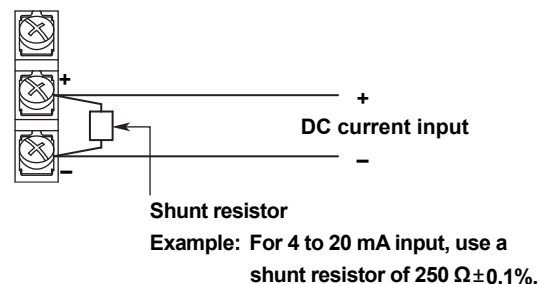
TC input



RTD input



DC current input

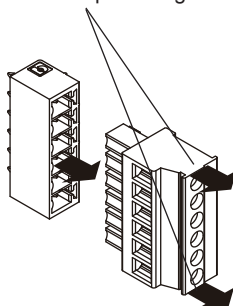


## Wiring Clamped Terminals

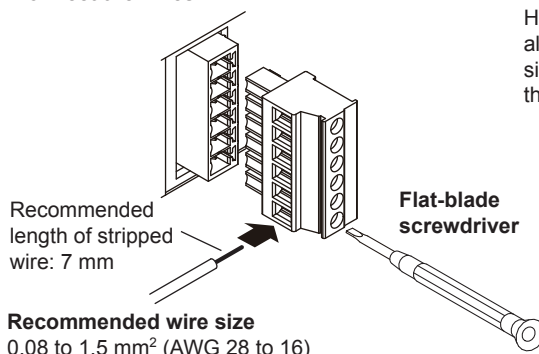
### CAUTION

As of August, 2007, the direction of the terminal blocks for the clamp input terminals (/H2 option) has changed. To use clamp input terminal blocks wired for use with previous YOKOGAWA recorders, rewire them to match the DX.

**Remove the terminal block**  
Hold both ends of the terminal block and pull straight.



**Connect the wires**



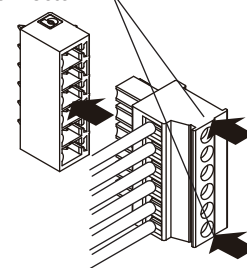
**Recommended wire size**  
0.08 to 1.5 mm<sup>2</sup> (AWG 28 to 16)

**Input signal wire**

First, loosen the screw at the front using a flat-blade screwdriver. Insert the input signal wire into the slit on the left side of the terminal block, and fasten the screw at the front.

**Connect the terminal block**

Hold both ends of the terminal block, align with the connector on the DX side, and push the terminal block into the connector.



### Note

RTD input terminals A and B are isolated on each channel. Terminal b is shorted internally across all channels. However, terminal b is also isolated on each channel on models with the /N1 option (Cu10, Cu25 RTD input/3 leg isolated RTD) and /N2 option (3 leg isolated RTD).



## Optional Terminal Wiring



### WARNING

- To prevent electric shock while wiring, ensure that the power supply source is turned OFF.
- If a voltage of more than 30 VAC or 60 VDC is to be applied to the output terminals, use ring-tongue crimp-on lugs with insulation sleeves on all terminals to prevent the wires from slipping out when the screws become loose. Furthermore, use double-insulated wires (dielectric strength of 2300 VAC or more) for the signal wires on which a voltage of more than 30 VAC or 60 VDC is to be applied. For all other wires, use basic insulated wires (dielectric strength of 1390 VAC). To prevent electric shock, attach the terminal cover after wiring and make sure not to touch the terminals.

### CAUTION

- Use the following circuit voltage for the connection to the alarm/FAIL/status output terminal.
  - When the connection is to Mains Circuits (primary AC power source circuits): 150 V or less
  - When the connection is to circuits derived from Mains Circuits (secondary circuits): 250 V or less  
(Mains Circuits voltage is less than 300 V, and connection must be used by isolation transformer.)
- To prevent fire, use signal wires having a temperature rating of 70°C or more.
- If a strong tension is applied to the cable wired to the DX, the terminals of the DX and/or the cable can be damaged. In order to prevent tension from being applied directly on the terminals, fasten all wiring cables to the rear of the mounting panel.
- Do not short the transmitter power supply output terminal or apply external voltage to it. If you do, the DX may malfunction.
- When using the transmitter power supply output terminal, do not use current that exceeds the maximum output current (25 mADC). If you do, the DX may malfunction.

### Note

For remote control wiring, use shielded wires to reduce noise. Connect the shield to the functional ground terminal or the ground terminal of the DX.

## Precautions to Be Taken While Wiring

**It is recommended that crimp-on lug with insulation sleeves (designed for 4-mm screws) be used when connecting wires to the optional input terminals.**



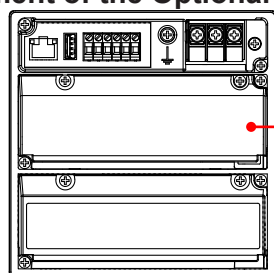
Crimp-on lug with insulation sleeves (for 4-mm screws)

## Wiring Procedure

As shown in the figure on next page, the optional terminal block is located on the rear panel. The optional terminal block is provided on the DX when an option that requires input/output is installed such as the alarm output relay (/A[ ] option), FAIL/status output relay (/F1 option), and remote control function (/R1 option), etc. A terminal cover is screwed in place on the measuring input terminal block. A label indicating the terminal arrangement is affixed to the cover.

1. Turn OFF the DX and remove the terminal cover.
2. Connect the signal wires to the terminals. The recommended torque for tightening the screws is 0.9 to 1.0 N•m
3. Replace the terminal cover and fasten it with screws. The proper torque for tightening the screws is 0.6 N•m.

## Arrangement of the Optional Terminals



Optional terminal block

- NC** Symbols such as "NC": Terminal functions  
**Alarm output, FAIL, Status**  
**NC: Normally closed**  
**C: Common**  
**NO: Normally opened**  
 See page 58.
- Remote control input**  
**1 to 8: Terminal number**  
**C: Common**  
 See page 58.
- Pulse input**  
**H and L: See page 58.**
- Transmitter power supply**  
**+ and -: See page 58.**
- A terminal that is not used. (With a screw)
- A terminal that is not used. (Without screw)

**/A1**

Alarm  
output

02 01

				NC	NC				
				C	C				
				NO	NO				

**/A2**

Alarm  
output

04 03 02 01

		NC	NC	NC	NC				
		C	C	C	C				
		NO	NO	NO	NO				

**/A3**

Alarm  
output

06 05 04 03 02 01

NC	NC	NC	NC	NC	NC				
C	C	C	C	C	C				
NO	NO	NO	NO	NO	NO				

**/A1/R1**

Alarm  
output

Remote  
control  
input

02 01

				NC	NC	6	3	C			
				C	C	7	4	1			
				NO	NO	8	5	2			

**/A2/R1**

Alarm  
output

Remote  
control  
input

04 03 02 01

		NC	NC	NC	NC	6	3	C			
		C	C	C	C	7	4	1			
		NO	NO	NO	NO	8	5	2			

**/A3/R1**

Alarm  
output

Remote  
control  
input

06 05 04 03 02 01

NC	NC	NC	NC	NC	NC	6	3	C			
C	C	C	C	C	C	7	4	1			
NO	NO	NO	NO	NO	NO	8	5	2			

**/R1**

Remote  
control  
input

										6	3	C
										7	4	1
										8	5	2

**/A1 /F1**

FAIL  
↓

Status  
↓

Alarm  
output

02 01

NC	NC			NC	NC				
C	C			C	C				
NO	NO			NO	NO				

**/A2 /F1**

FAIL  
↓

Status  
↓

Alarm  
output

04 03 02 01

NC	NC	NC	NC	NC	NC				
C	C	C	C	C	C				
NO	NO	NO	NO	NO	NO				

**/F1**

FAIL  
↓

Status  
↓

NC	NC								
C	C								
NO	NO								

**/A1 /F1 /R1**

FAIL  
↓

Status  
↓

Alarm  
output

Remote  
control  
input

02 01

NC	NC			NC	NC	6	3	C			
C	C			C	C	7	4	1			
NO	NO			NO	NO	8	5	2			

**/A2 /F1 /R1**

FAIL  
↓

Status  
↓

Alarm  
output

Remote  
control  
input

04 03 02 01

NC	NC	NC	NC	NC	NC	6	3	C			
C	C	C	C	C	C	7	4	1			
NO	NO	NO	NO	NO	NO	8	5	2			

(To next page)

(From previous page)

/F1 /R1											
FAIL		Status		Remote control input							
NC		NC	⊗	⊗	⊗	⊗	6	3	C		
C		C	⊗	⊗	⊗	⊗	7	4	1		
NO		NO	⊗	⊗	⊗	⊗	8	5	2		

/A1 /PM1											
		Alarm output		Pulse input			Remote control input				
		02	01	8	7	6	3	C			
⊗	⊗	NC	NC	H	H	H	3	C			
⊗	⊗	C	C	L	L	L	4	1			
⊗	⊗	NO	NO				5	2			

/A2 /PM1											
		Alarm output		Pulse input			Remote control input				
		04	03	02	01	8	7	6	3	C	
NC		NC	NC	NC	NC	H	H	H	3	C	
C		C	C	C	C	L	L	L	4	1	
NO		NO	NO	NO	NO				5	2	

/A1 /F1 /PM1											
FAIL		Status		Alarm output		Pulse input			Remote control input		
		02	01	8	7	6	3	C			
NC		NC	NC	NC	H	H	H	3	C		
C		C	C	C	L	L	L	4	1		
NO		NO	NO	NO				5	2		

/PM1											
		Pulse input			Remote control input						
		8	7	6	3	C					
		H	H	H	3	C					
		L	L	L	4	1					
					5	2					







/F1 /PM1									
FAIL		Status	Pulse input				Remote control input		
						8	7	6	
NC		NC	⊗	⊗		H	H	H	3
C		C	⊗	⊗		L	L	L	4
NO		NO	⊗	⊗					5

/A1 /TPS2											
Transmitter power supply				Alarm output							
				02				01			
+	+					NC	NC				
-	-					C	C				
						NO	NO				

/A1 /R1 /TPS2									
Transmitter power supply				Alarm output		Remote control input			
				02	01				
+	+			NC	NC	6	3	C	
-	-			C	C	7	4	1	
				NO	NO	8	5	2	

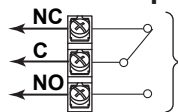
/TPS4											
Transmitter power supply											
+	+	+	+								
-	-	-	-								

/TPS2											
Transmitter power supply											
+	+			⊗	⊗						
-	-			⊗	⊗						
				⊗	⊗						

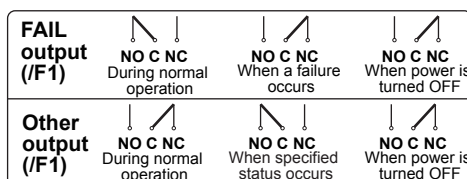
/R1 /TPS2										
Transmitter power supply					Remote control input					
+	+							6	3	C
-	-							7	4	1
								8	5	2

/R1 /TPS4											
Transmitter power supply						Remote control input					
+	+	+	+					6	3	C	
-	-	-	-					7	4	1	
								8	5	2	

## Alarm Output Terminal (/A1, /A2, and /A3), FAIL Output Terminal, and Status Output Terminal (/F1)



**Output format:** Relay contact  
**Contact rating:** 250 VAC (50/60 Hz)/3 A, 250 VDC/0.1 A (for resistor load)  
**Withstand voltage:** 1600 VAC at 50/60 Hz for one minute (between output terminals and the ground terminal)

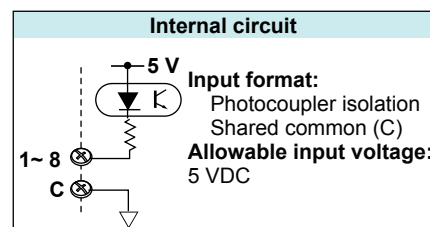
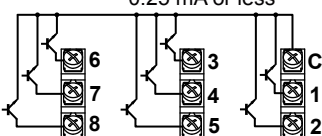
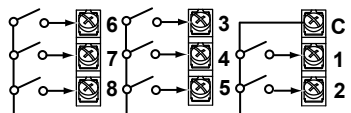


## Remote Control Input Terminal (/R1)

- Relay contact input (voltage-free contact)
- Transistor input (open collector)

Contact closed at 200  $\Omega$  or less  
 Contact open at 100 k $\Omega$  or greater

ON voltage: 0.5 V or less (30 mADC)  
 Leakage current when turned OFF: 0.25 mA or less



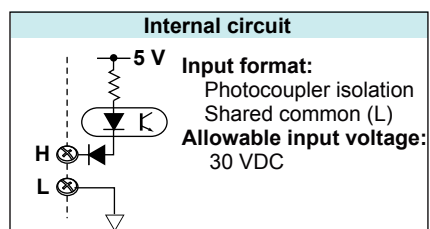
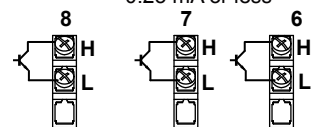
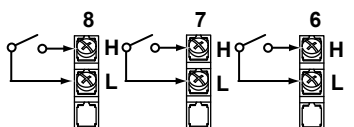
**Withstand voltage:** 1000 VDC for one minute between input terminals and the ground terminal

## Pulse Input Terminal (/PM1)

- Relay contact input (voltage-free contact)
- Transistor input (open collector)

Contact closed at 200  $\Omega$  or less  
 Contact open at 100 k $\Omega$  or greater

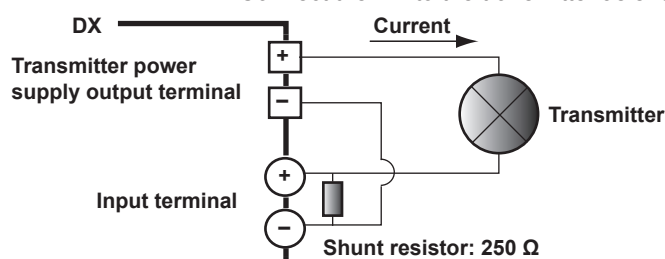
ON voltage: 0.5 V or less (30 mADC)  
 Leakage current when turned OFF: 0.25 mA or less



**Withstand voltage:** 1000 VDC for one minute between input terminals and the ground terminal

## 24 VDC Transmitter Power Supply Output Terminal (/TPS2 and /TPS4)

Connect the DX to the transmitter as shown below.

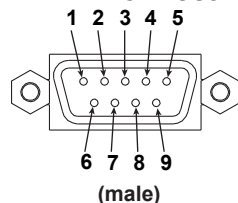


### Note

To reduce noise, use a shielded cable for wiring. Connect the shield to the functional ground terminal or the ground terminal of the DX.

## Serial Interface

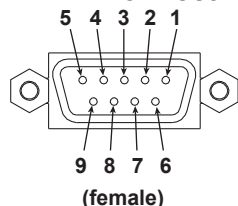
### Connecting to the RS-232 Connector (/C2)



- 2 RD (Received Data): Received data from the PC. Input signal to the DX.
- 3 SD (Send Data): Transmitted data to the PC. Output signal from the DX.
- 5 SG (Signal Ground): Signal ground.
- 7 RS (Request to Send): Handshaking signal when receiving data from the PC. Output signal from the DX.
- 8 CS (Clear to Send): Handshaking signal when transmitting data to the PC. Input signal to the DX.

\* Pins 1, 4, 6, and 9 are not used.

### Connecting to the PROFIBUS-DP Connector (/CP1)

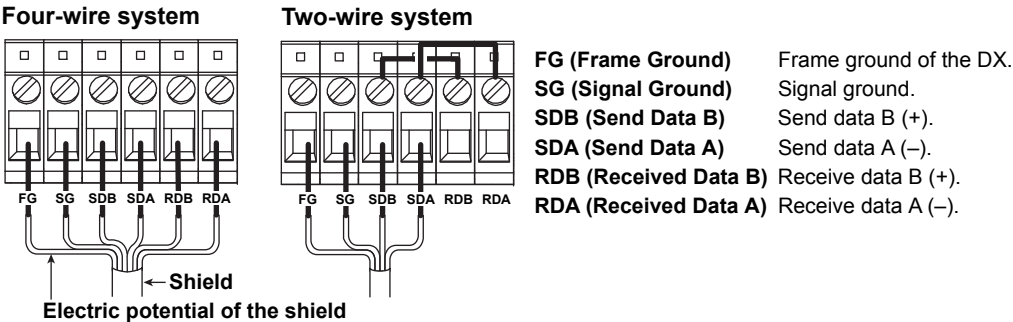


- 3 RxD/TxD-P: Positive data input/output.
- 4 CNTR-P: RTS (needed when using a repeater).
- 5 DGND: Ground.
- 6 VP +5V: +5 V.
- 8 RxD/TxD-N: Negative data input/output.

\* Pins 1, 2, 7, and 9 are not used.

\*\* The DX does not have a built-in terminator. If you need to terminate the cable at the DX, use a terminated connector.

Connecting to the RS-422/485 (/C3)



Recommended length of stripped wire: 9 mm. Recommended tightening torque: 0.4-0.5 N·m

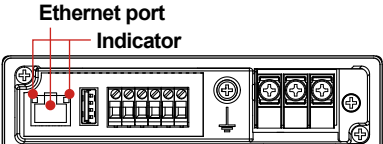
- Cable**
- There are two types of cables available, the four-wire cable and the two-wire cable (used only for the Modbus protocol). The cable should meet the following specifications.
- Type: Shielded twisted pair cable: 3 pairs 24 AWG or more (four-wire),  
2 pair 24 AWG or more (two-wire)
  - Characteristic impedance: 100 Ω
  - Capacitance: 50 pF/m
  - Total cable length: Up to 1.2 km

Connecting to the USB Port (/USB1)

The USB port complies with Rev. 1.1.



Connecting to the Ethernet Port



CAUTION

Do not connect an Ethernet cable whose plug does not comply with FCC specifications. If you do, the DX may malfunction.

Checking the Connection/Communication Status

You can check the connection status of the Ethernet interface with the indicators that are located above the Ethernet connector of the DX.

Indicator	Connection Status of the Ethernet Interface
Illuminated (green)	The Ethernet interface is electrically connected.
Blinking (red)	Transmitting data.
Off	The Ethernet interface is not electrically connected.

Checking the Connection on the DX Display

- **Checking the Connection at the status indication section of the DX display.**

You can check the connection status of the Ethernet interface on the Ethernet Link indicator located on the right side of the status display section of the basic setting mode display. The basic setting menu appears by pressing **MENU** to display the setting menu followed by **FUNC** for approximately 3 s.

- **Checking the Connection Status in the Display Section in the Upper Right Corner of the COMMUNICATION LOG Display of the DX**

You can check the connection status of the Ethernet interface on the Link indicator on the display section in the upper right corner of the COMMUNICATION LOG display.

Indicator	Connection Status of the Ethernet Interface
Illuminated (green)	The Ethernet interface is electrically connected.
Off	The Ethernet interface is not electrically connected.

## Power Supply Wiring

### Panel Mount Type, or Desktop Type with /P1 (Models with /H5 and /P1 Options)

#### Precautions to Be Taken While Wiring the Power Supply

Make sure to follow the warnings below when wiring the power supply. To prevent electric shock and damage to the DX, observe the following warnings.



#### WARNING

- To prevent electric shock when wiring, ensure the main power supply is turned OFF.
  - To prevent the possibility of fire, use 600 V PVC insulated wire (AWG20-16) or an equivalent wire for power wiring.
  - Make sure to earth ground the protective earth terminal through a grounding resistance less than 100  $\Omega$  before turning ON the power.
  - Use crimp-on lug with insulation sleeves (for 4-mm screws) for power supply wires and protective grounding wires.
  - To prevent electric shock, make sure to close the transparent cover for the power supply wires.
  - Make sure to provide a power switch (double-pole type) on the power supply line in order to separate the DX from the main power supply. Put an indication on this switch as the breaker on the power supply line for the DX and indications of ON and OFF.
- Switch specifications
- Steady-state current rating: 1 A or more (other than /P1), 3 A or more (/P1).
  - Inrush current rating: 60 A or more (other than /P1), 70 A or more (/P1).
  - Use a switch complies with IEC60947-1, 3.
- Connect a fuse (between 2 A and 15 A) to the power line. Use a fuse approved by CSA (for the use in North America) or VDE (for the use in Europe).
  - Do not add a switch or fuse to the ground line.

Use a power supply that meets the following conditions:

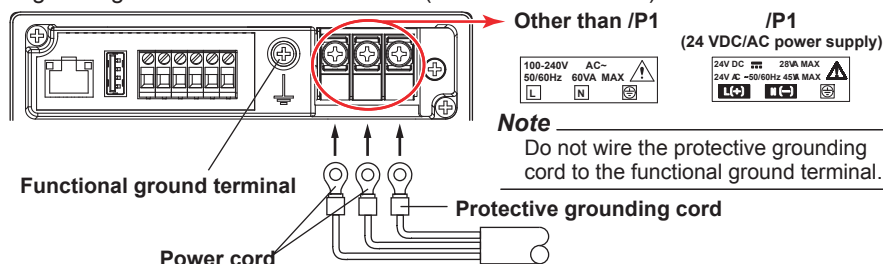
Item	Other than /P1	/P1
Rated supply voltage	100 to 240 VAC	24 VDC/AC
Allowable power supply voltage range	90 to 132, 180 to 264 VAC	21.6V to 26.4 VDC/AC
Rated power supply frequency	50/60 Hz	50/60 Hz (for AC)
Allowable power supply frequency range	50/60 Hz $\pm$ 2%	50/60 Hz $\pm$ 2% (for AC)
Maximum power consumption	45 VA (100 V)/60 VA (240 V)	28 VA (for DC), 45 VA (for AC)

#### Note

Do not use a supply voltage in the range 132 to 180 VAC, as this may have adverse effects on the measurement accuracy.

#### Wiring Procedure

- Turn OFF the power to the DX and open the transparent power terminal cover.
- Wire the power cord and the protective ground cord to the power supply terminals. Use ring-tongue crimp-on lugs (designed for 4 mm screws). The proper torque for tightening the screw is 1.4 to 1.5 N·m (12.4 to 13.2 inch·lbs).



- Replace the power terminal cover, and fasten it with screws.

### Desktop Type (/H5[ ] Option)

#### Precautions to Be Taken While Connecting the Power Supply

Make sure to follow the warnings below when connecting the power supply. To prevent electric shock and damage to the DX, observe the following warnings.



#### WARNING

- Before connecting the power cord, ensure that the source voltage matches the rated supply voltage of the DX and that it is within the maximum rated voltage range of the provided power cord.
- Connect the power cord after checking that the power switch of the DX is turned OFF.
- To prevent electric shock or fire, be sure to use the power cord supplied by YOKOGAWA.
- Make sure to perform protective earth grounding to prevent electric shock. Connect the power cord of the desktop type to a three-prong power outlet with a protective earth terminal.
- Do not use an extension cord without protective earth ground. Otherwise, the protection function will be compromised.

Use a power supply that meets the following conditions:

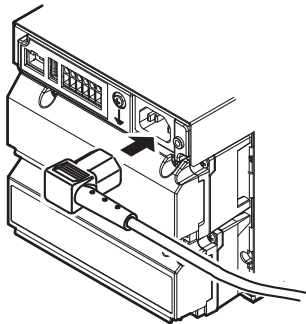
Item	Condition
Rated supply voltage	100 to 240 VAC
Allowable power supply voltage range	90 to 132, 180 to 264 VAC
Rated power supply frequency	50/60 Hz
Allowable power supply frequency range	50/60 Hz $\pm$ 2%
Maximum power consumption	45 VA (100V) and 60 VA (240 V)

#### Note

Do not use a supply voltage in the range 132 to 180 VAC, as this may have adverse effects on the measurement accuracy.

#### Connection Procedure

1. Check that the power switch is OFF.
2. Connect the power cord plug to the power connector on the rear panel. (Use the power cord that comes with the package.)



3. Check that the power outlet meets the conditions given in the table above and that the supply voltage is within the maximum rated voltage range of the power cord that comes with the package. Then, connect the other end of the power cord to the power outlet. The AC outlet must be of a three-prong type with a protective earth ground.

## Recommended Replacement Periods for Worn Parts

To preserve the reliability of the DX and to use the DX in a good condition for an extended time, it is recommended that periodic replacements be made on parts. The replacement parts may change to accommodate preventive maintenance over extended time. Be sure to check with your nearest YOKOGAWA dealer.

The following table shows the recommended replacement period for expendable parts. The replacement period shown here applies when the recorder is used under standard operating conditions. For the actual replacement period, consider the actual conditions of use. Replacement of parts will be carried out by a YOKOGAWA engineer or an engineer certified by YOKOGAWA. Contact your nearest YOKOGAWA dealer when such replacement is necessary.

Item	Replacement period	Name	Part No.	Quantity Used	Notes
LCD	5 years	Back Light Unit	B8703KB	1	
Battery	10 years	Battery Assembly	B9900BR	1	
Dust and water proof strip	5 years	Packing	B8705FY	1	
	5 years	Key Case Assembly	B8705BM	1	Without /KB1 or /KB2
	5 years	Key Case Assembly	B8705BY	1	With /KB1 or /KB2
Aluminum electrolytic capacitor	5 years*	Power Supply Assembly	—	1	
	5 years*	AD Assembly	Depends on the model		

\* Replacement period at the upper limit of the normal operating temperature (50°C)  
The replacement period varies depending on the operating temperature and the specifications of the DX.  
The lower the operating temperature, the longer is the replacement period. For example, if the operating temperature is 30°C, it may be possible to use the parts for more than 10 years.

### Note

- The LCD replacement period indicates the half life of the brightness when the brightness is set to the factory default setting. The half life is shortened as the brightness is set higher. The deterioration of brightness varies depending on the condition of use, and its determination is subjective. Consider these facts for determining the actual replacement period.
- The color of the LCD may become yellowish as time elapses. The discoloration tends to progress faster as the brightness is set higher.



# Setup Items and Default Values

The setup items and the default values in the setting mode are listed below. Enter the settings that you are using in the Setting column for your convenience.

## Setting mode menu

Menu Item	Page Reference
Date/Time	Page 65
Meas channel	Page 65 to 67
Math channel	Page 68 and 69*
Display	Page 70
Group set. Trip line	Page 71
Message, Comment Text	Page 71
Timer, Event action	Page 71 to 73
Data save	Page 74
Web Report	Page 74*
Menu customize	Page 74
Menu customize (sub-menu)	Page 74
Basic setting mode	Page 74
End: /AS1 option	Page 74*

Menu Item	Page Reference
Group set. Trip line	Page 75*
File header, File name	Page 75*
Batch text	Page 75*

Menu Item	Page Reference
Calibration correction	Page 75*
Finish Calibration	Page 75*

Menu Item	Page Reference
Load display data	Page 75
Load event data	Page 75
Load settings	Page 76
Save settings	Page 76
Custom display load	Page 76
Custom display save	Page 76
Load template	Page 76*
Save template	Page 76*
File list/delete	Page 76
Format	Page 76

\*: Optional.

## Basic setting mode menu

Basic Setting Mode		Ethernet Link
Environment	Menu	File/Initialize
Operating environment		Page 77
View, Message		Page 77
Input, Tag		Page 77
Alarm		Page 77
Remote		Page 77*1
Security, Media save		Page 78
Batch		Page 78
Communication		Page 78
Math		Page 78*1
Report		Page 79*1
Report		
End		Page 79

Basic Setting Mode		Ethernet Link
Environment	Menu	File/Initialize
Alarm		Page 80
A/D, Memor		Page 80
Burnout, RJC		Page 80
Keylock		Page 81*2
Login		Page 81*2
Report		Page 83*1
Time settings		Page 83
Communication (Ethernet)		Page 84 to 87
Communication (Serial)		Page 88*1
Status relay		Page 89*1
Status relay		Page 89
Set Calibration		Page 89
End		

Communication (PROFIBUS-DP): For models with the PROFIBUS-DP interface (/CP1 option). Page 88\*1

Signature: For models with the Advanced Security (/CP1 option). Page 80\*1

Basic Setting Mode		Ethernet Link
Environment	Menu	File/Initialize
Load settings		Page 90
Initialize		Page 90
Media eject		Page 90
End		Page 90

\*1: Optional.

\*2: Displayed when the function is enabled in the Environment settings.

## Setup Items in Setting Mode and Their Default Values

This section uses the following notations in tables.

\*1: This indicates functions that are available for release number 2 or later.

\*2: This indicates functions that are available for release number 3 or later.

\*3: This indicates functions that are available for release number 4 or later.

### Menu tab<sup>\*2</sup>

#### Date/Time > Date&Time

Setup Item	Selectable Range or Selections	Default Value	Setting
Date&Time > Time set	—	2008/01/01 <sup>*2</sup> 00:00:00	

#### Date/Time > Daylight Saving Time

Setup Item	Selectable Range or Selections	Default Value	Setting
Use/Not	Use/Not	Not	
Start time > Month	JAN/FEB/MAR/APR/MAY/JUN/JUL/AUG/SEP/ OCT/NOV/DEC	MAR	
Start time > Day order	1st/2nd/3rd/4th/Last	2nd	
Start time > Day of the week	SUN/MON/TUE/WED/THU/FRI/SAT	SUN	
Start time > Hour of the day	Numerical value	2	
End time > Month	JAN/FEB/MAR/APR/MAY/JUN/JUL/AUG/SEP/ OCT/NOV/DEC	NOV	
End time > Day order	1st/2nd/3rd/4th/Last	1st	
End time > Day of the week	SUN/MON/TUE/WED/THU/FRI/SAT	SUN	
End time > Hour of the day	Numerical value	1	

#### Meas channel > Range, Alarm

Setup Item	Selectable Range or Selections	Default Value	Setting
First-CH, Last-CH	Channel number	001	
Range > Mode	Skip/Volt/TC/RTD/Scale/Delta/DI/ 1-5V/Sqrt	Volt	
Mode=Volt			
Range	20mV/60mV/200mV/2V/6V/20V/50V	2V	
Span Lower	Depends on the range.	—	
Span Upper	Depends on the range.	—	
Mode=TC			
Range	R/S/B/K/E/J/T/N/W/L/U/WRe	R	
Span Lower	(Options may add additional settings.)	—	
Span Upper	Depends on the range.	—	
Mode=RTD			
Range	Pt/JPt (Options may add additional settings.)	Pt	
Span Lower	Depends on the range.	—	
Span Upper	Depends on the range.	—	
Mode=Scale			
Type	Volt/TC/RTD/DI	Volt	
Range	Depends on the type.	—	
Span Lower	Depends on the range.	—	
Span Upper	Depends on the range.	—	
Scale Lower	–30000 to 30000, decimal position: 0 to 4	0.00	
Scale Upper	–30000 to 30000, decimal position: 0 to 4	200.00	
Unit	6 characters or less	—	
Mode=Delta			
Type	Volt/TC/RTD/DI	Volt	
Range	Depends on the type.	—	
Span Lower	Depends on the range.	—	
Span Upper	Depends on the range.	—	
Ref.CH	Meas channel number	—	

## Setup Items and Default Values

Setup Item	Selectable Range or Selections	Default Value	Setting
Mode=DI			
Range	Level/Cont	Level	
Span Lower	0, 1	0	
Span Upper	0, 1	1	
Mode=1-5V			
Range	1-5V	1-5V	
Span Lower	0.800 to 5.200	1.000	
Span Upper	0.800 to 5.200	5.000	
Scale Lower	-30000 to 30000, decimal position :0 to 4	0.00	
Scale Upper	-30000 to 30000, decimal position :0 to 4	200.00	
Unit	6 characters or less	-	
Low-cut	On/Off	Off	
Mode=Sqrt			
Range	20mV/60mV/200mV/2V/6V/20V/50V		
Span Lower	Depends on the range.	-	
Span Upper	Depends on the range.	-	
Scale Lower	-30000 to 30000, decimal position: 0 to 4	0.00	
Scale Upper	-30000 to 30000, decimal position: 0 to 4	200.00	
Unit	6 characters or less	-	
Low-cut	On/Off	Off	
Low-cut value	0.0 to 5.0	0.5	
Alarm			
1, 2, 3, 4	On/Off	Off	
Type	H:High/L:Low/h:delta H/l:delta L/R:rate H/ r:rate L/T:delayH/t:delayL	H	
Value	Numerical value	-	
Relay	On/Off	Off	
Number	I01/.../I06 (Depends on the option.) S01/S02/S03/.../S29/S30	I01	
Detect	On/Off	On	

## Meas channel > Tag, Memory, Delay

Setup Item	Selectable Range or Selections	Default Value	Setting
<b>Without /AS1</b>			
First-CH, Last-CH	Channel number	001	
Tag > Comment <sup>*2</sup>	32 characters or less <sup>*2</sup>	-	
Tag > No. <sup>*2</sup>	16 characters or less	-	
Memory sample > On/Off	On/Off	On	
Alarm delay > Time	1 to 3600	10	
<b>With /AS1<sup>*3</sup></b>			
The First-CH, Last-CH, Tag, and Memory sample items are the same as on a DX without the /AS1 option.			
Alarm delay > Time	1 to 3600 when the unit is seconds. 1 to 24 when the unit is hours.	10	
Alarm delay > Unit	Hour/Sec	Sec	

## Meas channel > Moving average

Setup Item	Selectable Range or Selections	Default Value	Setting
First-CH, Last-CH	Channel number	001	
Moving average > On/Off	On/Off	Off	
Moving average > Count	2 to 400	2	

**Meas channel > Color**

Setup Item	Selectable Range or Selections	Default Value	Setting
Group of channel	001-006, etc	Depends on the model.	
Color	Red/Green/Blue/B.violet/Brown/Orange/ Y.green/Lightblue/Violet/Graly/Lime/Cyan/ Darkblue/Yellow/Lightgray/Purple/Black/Pink/ L.brown/L.green/Darkgray/Olive/DarkCyan/ S.green (24 colors)	Red to Gray	

**Meas channel > Zone, Scale**

Setup Item	Selectable Range or Selections	Default Value	Setting
First-CH, Last-CH	Channel number	001	
Zone > Lower	0 to 95	0	
Zone > Upper	5 to 100	100	
Scale > Position	Off/1/2/3/4/5/6	1	
Scale > Division	4/5/6/7/8/9/10/11/12/C10	10	

**Meas channel > Bar graph**

Setup Item	Selectable Range or Selections	Default Value	Setting
First-CH, Last-CH	Channel number	001	
Bar graph > Base position	Normal/Center/Lower <sup>*1</sup> /Upper <sup>*1</sup>	Normal	
Bar graph > Division	4/5/6/7/8/9/10/11/12	10	

**Meas channel > Partial**

Setup Item	Selectable Range or Selections	Default Value	Setting
First-CH, Last-CH	Channel number	001	
On/Off	On/Off	Off	
Expand	1 to 99%	50	
Boundary	Span Lower+1digit to Span Upper-1digit	0.0000	

**Meas channel > Alarm mark**

Setup Item	Selectable Range or Selections	Default Value	Setting
First-CH, Last-CH	Channel number	001	
Mark kind	Alarm/Fixed	Alarm	
Indicate on Scale	On/Off	Off	
Alarm mark color > Alarm 1	Auto <sup>*2</sup> /Red/Green/.../S.green (24 colors)	Red	
Alarm mark color > Alarm 2	Same as Alarm 1	Orange	
Alarm mark color > Alarm 3	Same as Alarm 1	Orange	
Alarm mark color > Alarm 4	Same as Alarm 1	Red	

**Meas channel > Color scale band**

Setup Item	Selectable Range or Selections	Default Value	Setting
First-CH, Last-CH	Channel number	001	
Band area	Off/In/Out	Off	
Color	Red/Green/.../S.green (24 colors)	Lime	
Display position > Lower	Measuring range	0.0000	
Display position > Upper	Measuring range	0.0100	

**Meas channel > Calibration correction**

Setup Item	Selectable Range or Selections	Default Value	Setting
First-CH, Last-CH	Channel number	001	
Number of set points	Off/2/3/4/5/6/7/8/9/10/11/12/13/14/15/16	Off	
1 to n > MES val	Value in the measuring range/measured value	—	
1 to n > True val	Measuring range	—	

## Setup Items and Default Values

### Math channel > Expression, Alarm

Setup Item	Selectable Range or Selections	Default Value	Setting
First-CH, Last-CH	Channel number	101	
Math On/Off	On/Off	Off	
Calculation expression	120 characters or less	–	
Span Lower	–9999999 to 99999999, decimal position: 0 to 4	–200.00	
Span Upper	–9999999 to 99999999, decimal position: 0 to 4	200.00	
Unit	6 characters or less	–	
Math alarm			
1, 2, 3, 4	On/Off	Off	
Type	H:High/L:Low/T:delayH/t:delayL	H	
Value	Numerical value	–	
Relay	On/Off	Off	
No.	I01/.../I06 (Depends on the option.) S01/S02/S03/.../S29/S30	I01	
Detect	On/Off	On	

### Math channel > Constant

Setup Item	Selectable Range or Selections	Default Value	Setting
Number of constant	K01 to K60	K01	
Value	–9.9999E+29 to –1.0000E–30, 0, 1.0000E–30 to –9.9999E+29	1	

### Math channel > Tag, Memory, Delay

Setup Item	Selectable Range or Selections	Default Value	Setting
First-CH, Last-CH	Channel number	101	
Tag > Comment <sup>*2</sup>	32 characters or less	–	
Tag > No. <sup>*2</sup>	16 characters or less	–	
Memory sample > On/Off	On/Off	On	
Alarm delay > Time	1 to 3600	10	

### Math channel > TLOG, Rolling average

Setup Item	Selectable Range or Selections	Default Value	Setting
First-CH, Last-CH	Channel number	101	
TLOG > Timer type <sup>*2</sup>	Timer/Match T	Timer	
TLOG > Timer No.	1/2/3/4 1/2/3/.../11/12 (on models with the /BT2 multi batch option) <sup>*2</sup>	1	
TLOG > Sum scale	Off, /s, /min, /h	Off	
TLOG > Reset	On/Off	Off	
Rolling average > On/Off	On/Off	Off	
Rolling average > Interval	1s/2s/3s/4s/5s/6s/10s/12s/15s/20s/30s/ 1min/2min/3min/4min/5min/6min/10min/12min/ 15min/20min/30min/1h	10s	
Rolling average > Number of samples	1 to 1500	1	

### Math channel > Color

Setup items and values are the same as those for measurement channels, except the channel numbers.

### Math channel > Zone, Scale

Setup items and values are the same as those for measurement channels, except the channel numbers.

### Math channel > Bar graph

Setup items and values are the same as those for measurement channels, except the channel numbers.

**Math channel > Partial**

Setup items and values are the same as those for measurement channels, except the channel numbers.

**Math channel > Alarm mark**

Setup items and values are the same as those for measurement channels, except the channel numbers.

**Math channel > Color scale band**

Setup items and values are the same as those for measurement channels, except the channel numbers.

**Math channel > Math start action**

Setup Item	Selectable Range or Selections	Default Value	Setting
Math start action > Math start	Off/Start/Rst+St	Start	

## Setup Items and Default Values

### Display > Trend/Save interval

Setup Item	Selectable Range or Selections	Default Value	Setting
Trend interval [/div]	5s <sup>2</sup> /10s <sup>2</sup> /15s/30s/1min/2min/5min/10min/ 15min/20min/30min/1h/2h/4h/10h (Depends on the model.)	1min	
Save interval	10min to 31day (Depends on the trend interval.)	1h	
Second interval [/div]	5s <sup>2</sup> /10s <sup>2</sup> /15s/30s/1min/2min/5min/10min/ 15min/20min/30min/1h/2h/4h/10h (Depends on the model.)	1min	

### Display > Trend

Setup Item	Selectable Range or Selections	Default Value	Setting
Direction	Horizontal/Vertical/Wide/Split	Vertical	
Trend clear	On/Off	Off	
Message direction	Horizontal/Vertical	Horizontal	
Scale > Digit	Normal/Fine	Normal	
Scale > Value indicator	Mark/Bargraph	Mark	
Trend line	1/2/3	2	
Grid	Auto/4/5/6/7/8/9/10/11/12	Auto	

### Display > Bar graph

Setup Item	Selectable Range or Selections	Default Value	Setting
Direction	Horizontal/Vertical	Vertical	

### Display > LCD

Setup Item	Selectable Range or Selections	Default Value	Setting
Brightness	1/2/3/4/5/6/7/8	2	
Backlight saver > Mode	Off/Dimmer/Timeoff	Off	
Backlight saver > Saver time	1min/2min/5min/10min/30min/1h	1h	
Backlight saver > Restore	Key, Key+Alarm	Key+Alarm	

### Display > Monitor

Setup Item	Selectable Range or Selections	Default Value	Setting
Background > Display	White/Black	White	
Background > Historical trend	White/Cream/Black/Lightgray	Black	
Scroll time	5s/10s/20s/30s/1min	10s	
Jump default display	Off/1min/2min/5min/10min/20min/30min/1h	Off	

### Display > Annunciator<sup>\*2</sup>

Setup Item	Selectable Range or Selections	Default Value	Setting
Annunciator position	1 to 24	1	
On/Off	On/Off	Off	
Channel	Channel number	001	
Level	1 /2/3/4/All	1	
Comment txt block No.	1 to 50	1	

### Display > FAVORITE Key action<sup>\*2</sup>

Setup Item	Selectable Range or Selections	Default Value	Setting
Action	History/Favorite	Favorite	
Group display	Current/Saved	Saved	
Time axis zoom	Current/Saved	Saved	



**Group set, Trip line**

Setup Item	Selectable Range or Selections	Default Value	Setting
Group number	1/2/3/.../9/10	1	
Group set > On/Off	On/Off	Group 1 to 4: On Group 5 to 10: Off	
Group set > Group name	16 characters or less	GROUP1 etc.	
Group set > CH set	39 characters or less	Depends on the model.	
Trip line			
1, 2, 3, 4	On/Off	Off	
Position	0 to 100	50	
Color	Red/Green/.../S.green (24 colors)	1:Red, 2:Green 3:Blue, 4:Yellow	
Width	1/2/3	2	

**Message, Comment Text<sup>\*2</sup> > Message**

Setup Item	Selectable Range or Selections	Default Value	Setting
Message No.	1-10/11-20/21-30/31-40/41-50/51-60/ 61-70/71-80/81-90/91-100	11-20 <sup>*3</sup>	
1 to 100	32 characters or less	—	

**Message, Comment Text > Comment text fields<sup>\*2</sup>**

Setup Item	Selectable Range or Selections	Default Value	Setting
Comment txt field no	1 to 100	1	
Text info	32 characters or less	—	

**Message, Comment Text > Comment text block<sup>\*2</sup>**

Setup Item	Selectable Range or Selections	Default Value	Setting
Comment txt block no	1 to 50	1	
Line > 1 > Comment txt field no	1 to 100	1	
Line > 2 > Comment txt field no	1 to 100	1	
Line > 3 > Comment txt field no	1 to 100	1	
Line > 4 > Comment txt field no	1 to 100	1	
Line > 5 > Comment txt field no	1 to 100	1	

**Timer, Event action > Timer**

Setup Item	Selectable Range or Selections	Default Value	Setting
Timer No.	1/2/3/4 1/2/3/.../11/12 (on models with the /BT2 multi batch option) <sup>*2</sup>	1	
Mode	Off/Relative/Absolute	Off	
Relative > Interval	00:01 to 24:00	01:00	
Relative > Reset at Math Start	On/Off	On	
Absolute > Interval	1min/2min/3min/4min/5min/6min/10min/ 12min/15min/20min/30min/1h/2h/3h/4h/ 6h/8h/12h/24h	1h	
Absolute > Ref.time	0 to 23	0:00	

**Timer, Event action > Match time timer**

Setup Item	Selectable Range or Selections	Default Value	Setting
Timer number	1/2/3/4 1/2/3/.../11/12 (on models with the /BT2 multi batch option) <sup>*2</sup>	1	
Kind	Off/Day/Week/Month/Year	Off	
Day	1 to 31 (varies depending on the month)	1	
Day of the week	SUN/MON/TUE/WED/THU/FRI/SAT	SUN	
Hour	00:00 to 23:59	00:00	
Timer action	Single/Repeat	Repeat	

## Setup Items and Default Values

### Timer, Event action > Event action

Setup Item	Selectable Range or Selections	Default Value	Setting
Logic box number	1/2/3/.../39/40	1	
Event	None/Remote/Relay/Switch/Timer/ Matchtime/Alarm/UserKey/EventLevelSwitch <sup>*2</sup> / EventEdgeSwitch <sup>*2</sup> / Relay-Off <sup>*3</sup> /Switch-Off <sup>*3</sup> /Alarm-Off <sup>*3</sup> / EventLevelSwitch-Off <sup>*3</sup>	None	
Remote > Remote number	1/2/3/4/5/6/7/8	1	
Relay > Relay number	I01/.../I06 (Depends on the option.)	I01	
Switch > Switch No.	S01/S02/S03/.../S29/S30	S01	
Timer > Timer No.	1/2/3/4 1/2/3/.../11/12 (on models with the /BT2 multi batch option) <sup>*2</sup>	1	
MatchTimeTimer > Match Time Timer No.	1/2/3/4 1/2/3/.../11/12 (on models with the /BT2 multi batch option) <sup>*2</sup>	1	
EventLevelSwitch > Event Switch No <sup>*2</sup>	1/2/3/.../29/30	1	
EventEdgeSwitch > Event Switch No <sup>*2</sup>	1/2/3/.../29/30	1	
Relay-Off > Relay number <sup>*3</sup>	I01/.../I06 (Depends on the option.)	I01	
Switch-Off > Switch No. <sup>*</sup>	S01/S02/S03/.../S29/S30	S01	
EventLevelSwitch-Off > Event Switch No <sup>*3</sup>	1/2/3/.../30	1	

Setup Item	Selectable Range or Selections	Default Value	Setting
Action	MemoryStart/Stop, MemoryStart, MemoryStop, Trigger (not selectable on a DX with the /AS1 option <sup>*3</sup> ), AlarmACK, AlarmDisplayReset <sup>*2</sup> , MathStart/Stop, MathStart, MathStop, MathReset, SaveDisplay, SaveEvent, Message, Snapshot, DisplayRate1/2, ManualSample, TimerReset, DisplayGroupChange, FavoriteDisplay <sup>*2</sup> , CommentDisplay <sup>*2</sup> , Flag, PanelLoad (not selectable on a DX with the /AS1 option <sup>*3</sup> ), TimeAdjust (Depends on the events, etc)	Group	
Message > Message No.	1 to 100	1	
Message > Write to	All/Select	All	
Message > Group number	1/2/3/.../9/10	1	
Group > Group number	1/2/3/.../9/10	1	
FavoriteDisplay > Action <sup>*2</sup>	Key/Select	Key	
FavoriteDisplay > Select > Favorite Screen No <sup>*2</sup>	1/2/3/4/5/6/7/8	1	
CommentDisplay > Comment Txt Block No <sup>*2</sup>	1 to 50	1	
Flag > Flag number	1/2/3/4/5/6/7/8	1	
TimerReset > Timer No.	1/2/3/4	1	
PanelLoad > Setting file number	1/2/3/.../11/12 (on models with the /BT2 multi batch option) <sup>*2</sup>	1	
The following menus appear when the multi batch function <sup>*2</sup> is in use.			
MemoryStart/Stop > Target Action	All/Select	All	
MemoryStart/Stop > Select > Batch Group No	1/2/3/4/5/6 (varies depending on settings)	1	
MemoryStart > Target Action	All/Select	All	
MemoryStart > Select > Batch Group No	1/2/3/4/5/6 (varies depending on settings)	1	
MemoryStop > Target Action	All/Select	All	
MemoryStop > Select > Batch Group No	1/2/3/4/5/6 (varies depending on settings)	1	
SaveDisplay > Target Action	All/Select	All	
SaveDisplay > Select > Batch Group No	1/2/3/4/5/6 (varies depending on settings)	1	
SaveEvent > Target Action	All/Select	All	
SaveEvent > Select > Batch Group No	1/2/3/4/5/6 (varies depending on settings)	1	
MathReset > Target Action	All/Select	All	
MathReset > Select > Batch Group No	1/2/3/4/5/6 (varies depending on settings)	1	
Message > Message No.	1 to 100	1	
Message > Write to	All/Select	All	
Message > Select > Batch Group No	1/2/3/4/5/6 (varies depending on settings)	1	
Message > Select > Display Group No	1/2/3/4/5/6	1	
Message > All > Batch Group No	1/2/3/4/5/6 (varies depending on settings)	1	
DisplayGroupChange > Batch Group No	1/2/3/4/5/6 (varies depending on settings)	1	
DisplayGroupChange > Display Group No	1/2/3/4/5/6	1	

## Setup Items and Default Values

### Data save > File header, File name

Setup Item	Selectable Range or Selections	Default Value	Setting
File header > Characters	50 characters or less	–	
Data file name > Structure	Date/Serial/Batch	Date	
Data file name > Identified strings	16 characters or less	–	

### Data save > Save directory

Setup Item	Selectable Range or Selections	Default Value	Setting
Directory name	20 characters or less	DATA0	

### Data save > Event data

Setup Item	Selectable Range or Selections	Default Value	Setting
<b>Without /AS1</b>			
Sample rate	25ms/125ms/250ms/500ms/1s/2s/5s/10s/30s/60s/120s/300s/600s/15min <sup>2</sup> /20min <sup>2</sup> /30min <sup>2</sup> (Depends on the model.)	1s	
Mode	Free/Single/Repeat	Free	
Data length	10min to 31day (Depends on the sample rate.)	1h	
Pre-trigger	0/5/25/50/75/95/100	0	
Trigger signal > Key	On/Off	On	
<b>With /AS1<sup>*3</sup></b>			
The Sample rate and Data length items are the same as on a DX without the /AS1 option.			
Mode	Fixed at Free	Free	
There are no Pre-trigger or Trigger signal > Key items.			

### Data save > Batch text

Setup Item	Selectable Range or Selections	Default Value	Setting
Text field number	1 to 24 <sup>*2</sup>	1	
Text field > Title of field	20 characters or less	–	
Text field > Characters	30 characters or less	–	

### Web Report<sup>\*2</sup>

Setup Item	Selectable Range or Selections	Default Value	Setting
Web Report No	1/2/3/4/5/6/7/8/9/10	1	
On/Off	On/Off	Off	
Title	64 characters or less	–	
Item No	1-5/6-10	1-5	
Item > 1 to 10	On/Off	Off	
Item > 1 to 10 > Channel	R01/R02/.../R24	R01	
Item > 1 to 10 > Value	Max/Min/Ave/Sum/Inst	Sum	
Item > 1 to 10 > Name	16 characters or less	–	

### Menu customize

Setup Item	Selectable Range or Selections	Default Value	Setting
Function menu	Select/Hide/View/Transfer	–	
Display menu	Separate/Select/Hide/View/Transfer	–	

### End (/AS1 option)<sup>\*3</sup>

Setup Item	Selectable Range or Selections	Default Value	Setting
End	Yes/No	–	

### Basic setting mode<sup>\*2</sup>

Setup Item	Selectable Range or Selections	Default Value	Setting
Entering basic setting mode. ...	Yes/No	–	

**Multi batch tab<sup>\*2</sup>****Group set, Trip line > Group set<sup>\*2</sup>**

Setup Item	Selectable Range or Selections	Default Value	Setting
First Batch Group, Last Batch Group	1/2/3/4/5/6 (varies depending on settings)	1	
Display Group No	1/2/3/4/5/6	1	
Set Display Group > On/Off	On/Off	Off	
Set Display Group > Group name	16 characters or less	BATCH-1, etc.	
Set Display Group > CH set	23 characters or less	Depends on the model.	

**Group set, Trip line > Trip line<sup>\*2</sup>**

Setup Item	Selectable Range or Selections	Default Value	Setting
First Batch Group, Last Batch Group	1/2/3/4/5/6 (varies depending on settings)	1	
Display Group No	1/2/3/4/5/6	1	
Trip line			
1, 2, 3, 4	On/Off	Off	
Position	0 to 100	50	
Color	Red/Green/.../S.green (24 colors)	1:Red, 2:Green 3:Blue, 4:Yellow	
Width	1/2/3	2	

**File header, File name<sup>\*2</sup>**

Setup Item	Selectable Range or Selections	Default Value	Setting
First Batch Group, Last Batch Group	1/2/3/4/5/6 (varies depending on settings)	1	
File header > Characters	50 characters or less	—	
Data file name > Structure	Date/Serial/Batch	Date	
Data file name > Identified strings	16 characters or less	—	

**Data save > Batch text<sup>\*2</sup>**

Setup Item	Selectable Range or Selections	Default Value	Setting
First Batch Group, Last Batch Group	1/2/3/4/5/6 (varies depending on settings)	1	
Text field number	1 to 24	1	
Text field > Title of field	20 characters or less	—	
Text field > Characters	30 characters or less	—	

**End (/AS1 option)<sup>\*3</sup>**

Setup Item	Selectable Range or Selections	Default Value	Setting
End	Yes/No	—	

**Set Calibration Tab<sup>\*3</sup>**

Setup Item	Selectable Range or Selections	Default Value	Setting
Calibration correction	Same as Meas channel > Calibration correction		
Finish Calibration > Next calibration due	Year, month, and date	—	
Finish Calibration > Execute	—	—	

**End (/AS1 option)<sup>\*3</sup>**

Setup Item	Selectable Range or Selections	Default Value	Setting
End	Yes/No	—	

**File tab<sup>\*2</sup>****Load display data**

Setup Item	Selectable Range or Selections	Default Value	Setting
Kind	CF/USB	CF	

## Setup Items and Default Values

### Load event data

Setup Item	Selectable Range or Selections	Default Value	Setting
Kind	CF/USB	CF	

### Load settings

Setup Item	Selectable Range or Selections	Default Value	Setting
Kind	CF/USB	CF	

### Save settings

Setup Item	Selectable Range or Selections	Default Value	Setting
Kind	CF/USB	CF	
File name	32 characters or less	—	

### Custom display load > Select<sup>\*2</sup>

Setup Item	Selectable Range or Selections	Default Value	Setting
Display No.	Internal 1 to Internal 3, External 1 to External 25	Internal 1	
File selection screen	—	—	

### Custom display load > All<sup>\*2</sup>

Setup Item	Selectable Range or Selections	Default Value	Setting
Directory selection screen	—	—	

### Custom display save > Select<sup>\*2</sup>

Setup Item	Selectable Range or Selections	Default Value	Setting
Display No.	Internal 1 to Internal 3, External 1 to External 25	Internal 1	
File name	32 characters or less	—	

### Custom display save > All<sup>\*2</sup>

Setup Item	Selectable Range or Selections	Default Value	Setting
Directory name	20 characters or less	—	

### File list/delete (Delete is not available on DXs with the /AS1 option.)<sup>\*3</sup>

Setup Item	Selectable Range or Selections	Default Value	Setting
Kind	CF/USB	CF	

### Load template<sup>\*3</sup>

Setup Item	Selectable Range or Selections	Default Value	Setting
Report Kind	Hour, Day, Week, Month, Hour+Day, Day+Week, Day+Month	—	

### Save template<sup>\*3</sup>

Setup Item	Selectable Range or Selections	Default Value	Setting
Report Kind	Hour, Day, Week, Month, Hour+Day, Day+Week, Day+Month	—	
Template data save > File name	32 characters or less	—	

### Format (Without /AS1)

Setup Item	Selectable Range or Selections	Default Value	Setting
Kind	CF/USB	CF	
Format > Volume name	11 characters or less	—	

### End (/AS1 option)<sup>\*3</sup>

Setup Item	Selectable Range or Selections	Default Value	Setting
End	Yes/No	—	

## Setup Items in Basic Setting Mode and Their Default Values

This section uses the following notations in tables.

\*1: This indicates functions that are available for release number 2 or later.

\*2: This indicates functions that are available for release number 3 or later.

\*3: This indicates functions that are available for release number 4 or later.

### Environment tab<sup>\*2</sup>

#### Operating environment

Setup Item	Selectable Range or Selections	Default Value	Setting
Tag/Channel	Tag/Channel	Tag	
Language	English/Japanese/German/French/Chinese	English	
Remote Controller ID	Off/0/1/.../30/31	Off	
Temperature	C/F	C	
Decimal Point Type <sup>*2</sup>	Point/Comma	Point	
Basic setting mode Menu display <sup>*2</sup>	On/Off	On	

#### View, Message

Setup Item	Selectable Range or Selections	Default Value	Setting
View > Trend type	T-Y	T-Y	
View > Partial	On/Off	Off	
View > Trend rate switching	On/Off	Off	
Message > Write group	Common/Separate	Common	
Message > Power-fail message	On/Off	Off	
Message > Change message	On/Off	Off	

#### Input, Tag<sup>\*2</sup>

Setup Item	Selectable Range or Selections	Default Value	Setting
Input > Value on over-range	Free/Over	Over	
Tag Basic settings > Tag No. Use/Not <sup>*2</sup>	Use/Not	Not	

#### Alarm > Action<sup>\*2</sup>

Setup Item	Selectable Range or Selections	Default Value	Setting
No logging	On/Off	Off	
Annunciator mode <sup>*2</sup>	On/Off	Off	
Sequence <sup>*2</sup>	ISA-A-4/ISA-A/ISA-M	ISA-A	
Time off color <sup>*2</sup>	White/Green	Green	

#### Alarm > Level/Color<sup>\*2</sup>

Setup Item	Selectable Range or Selections	Default Value	Setting
Level	1-2-3-4/1-4-2-3/1-4-3-2	1-2-3-4	
Color > 1	Red/Yellow/Orange/Pink	Red	
Color > 2	Red/Yellow/Orange/Pink	Red	
Color > 3	Red/Yellow/Orange/Pink	Red	
Color > 4	Red/Yellow/Orange/Pink	Red	

#### Remote<sup>\*2</sup>

Setup Item	Selectable Range or Selections	Default Value	Setting
Level	1-2-3-4/1-4-2-3/1-4-3-2	1-2-3-4	
Remote Input > 1	N.O/N.C	N.O	
Remote Input > 2	N.O/N.C	N.O	
Remote Input > 3	N.O/N.C	N.O	
Remote Input > 4	N.O/N.C	N.O	
Remote Input > 5	N.O/N.C	N.O	
Remote Input > 6	N.O/N.C	N.O	
Remote Input > 7	N.O/N.C	N.O	
Remote Input > 8	N.O/N.C	N.O	

## Setup Items and Default Values

### Security, Media save

Setup Item	Selectable Range or Selections	Default Value	Setting
<b>Without /AS1</b>			
Security > Key	Off/Login/Keylock	Off	
Security > Communication	Off/Login	Off	
Save > Auto save	On/Off	On	
Save > Media FIFO <sup>*1</sup>	On/Off	Off	
<b>With /AS1<sup>*3</sup></b>			
Security > Key	Login	Login	
Security > Communication	Off/Login	Off	
Security > Multi login	On/Off	Off	
Security > Password management	On/Off	Off	
The Save items are the same as on a DX without the /AS1 option.			

### Batch

Setup Item	Selectable Range or Selections	Default Value	Setting
On/Off	On/Off/MultiBatch <sup>*2</sup>	Off (With /AS1, On)	
Lot-No. digit	Off/4/6/8	6	
Auto increment	On/Off	On	
Batch operation qty <sup>*2</sup>	2/3/4/5/6	4	

### Communication > Service port

Setup Item	Selectable Range or Selections	Default Value	Setting
FTP	1 to 65535	21	
HTTP	1 to 65535	80	
SNTP	1 to 65535	123	
Modbus	1 to 65535	502	

### Communication > POP3 Details<sup>\*2</sup>

Setup Item	Selectable Range or Selections	Default Value	Setting
POP Before SMTP > Send delay [second]	0/1/2/3/4/5/6/7/8/9/10	2	
POP3 Login	PLANE/APOP	PLAIN	

### Communication > FTP Server Details<sup>\*2</sup>

Setup Item	Selectable Range or Selections	Default Value	Setting
Output Directory Format	MS-DOS/UNIX	MS-DOS	

### Math

Setup Item	Selectable Range or Selections	Default Value	Setting
Value on Error	+Over/—Over	+Over	
Value on Overflow > SUM, AVE	Error/Skip/Limit	Skip	
Value on Overflow > MAX, MIN, P-P	Over/Skip	Over	



**Report**

Setup Item	Selectable Range or Selections	Default Value	Setting
Report select > 1	Max/Min/Ave/Sum/Inst	Ave	
Report select > 2	Off/Max/Min/Ave/Sum/Inst	Max	
Report select > 3	Off/Max/Min/Ave/Sum/Inst	Min	
Report select > 4	Off/Max/Min/Ave/Sum/Inst	Sum	
File type	Separate/Combine/Separate2 <sup>*3</sup>	Separate	
Use Template <sup>*3</sup>	Use/Not	Not	

**End**

Setup Item	Selectable Range or Selections	Default Value	Setting
Do you want to store and make the new settings take effect?	Yes/No/Cancel	—	

**Menu tab<sup>\*2</sup>****Alarm > Basic settings**

Setup Item	Selectable Range or Selections	Default Value	Setting
Reflash	On/Off/On-1s <sup>*3</sup> /On-2s <sup>*3</sup>	Off	
Rate of change > Decrease	1 to 32	1	
Rate of change > Increase	1 to 32	1	
Indicator	Hold/Nonhold	Nonhold	

**Alarm > Switch, Relay**

Setup Item	Selectable Range or Selections	Default Value	Setting
Internal Switch > AND	None/S01/S01-S02/.../S01-S29/S01-S30	None	
Relay > AND	None/I01/I01-I02/.../I01-I06 (Depends on the option.)	None	
Relay > Action	Energize/De_energ	Energize	
Relay > Hold	Hold/Nonhold	Nonhold	
Relay > Relay Action on ACK <sup>*1</sup>	Normal/Reset	Normal	

**Alarm > Hysteresis**

Setup Item	Selectable Range or Selections	Default Value	Setting
Meas CH > High/Low	0.0 to 5.0	0.5	
Meas CH > Delta High/Low	0.0 to 5.0	0.0	
Math CH > High/Low	0.0 to 5.0	0.0	

**A/D, Memory**

Setup Item	Selectable Range or Selections	Default Value	Setting
<b>Without /AS1</b>			
Scan interval > Scan mode	Normal/Fast	Normal	
Normal > Scan interval	125ms/250ms (DX1002, DX1002N, DX1004, DX1004N) 1s/2s/5s (DX1006, DX1006N, DX1012, DX1012N)	125ms 1s	
Normal > A/D integrate	Auto/50Hz/60Hz/100ms	Auto	
Fast <sup>†</sup> > Scan interval	25ms (DX1002, DX1002N, DX1004, DX1004N) 125ms (DX1006, DX1006N, DX1012, DX1012N)	25ms 125ms	
Fast <sup>†</sup> > A/D integrate	600Hz	600Hz	
Memory > Data kind	Display/E+D/Event	Display	
<b>With /AS1<sup>*3</sup></b>			
The Scan interval items are the same as on a DX without the /AS1 option.			
Memory > Data kind	Display/Event	Display	

†: You cannot select this option on a DX with external input channels (/MC1) or when the multi batch function (/BT2) is in use.

**Signature (/AS1 option)<sup>\*3</sup>**

Setup Item	Selectable Range or Selections	Default Value	Setting
Process type	Batch/Continue	Batch	
Sign from recorder	Off/Sign1/Sign1+2/Sign1+2+3	Off	
Signature at batch stop	On/Off	Off	
FTP transfer at signing	On/Off	Off	

**Burnout, RJC**

Setup Item	Selectable Range or Selections	Default Value	Setting
First-CH, Last-CH	Channel number	001	
Burnout set > Mode	Off/Up/Down	Off	
RJC > Mode	Internal/External	Internal	
RJC > Volt	-20000 to 20000μV	0	

**Keylock > Password, Key action, Media (Without /AS1)**

Setup Item	Selectable Range or Selections	Default Value	Setting
Password	8 characters or less	–	
Key action > START	Free/Lock	Free	
Key action > STOP	Free/Lock	Free	
Key action > MENU	Free/Lock	Free	
Key action > USER	Free/Lock	Free	
Key action > DISP/ENTER	Free/Lock	Free	
Key action > FAVORITE	Free/Lock	Free	
Media/USB > External media	Free/Lock	Free	
Media/USB > Load settings <sup>*2</sup>	Free/Lock	Free	

**Keylock > Action of Function (Without /AS1)**

Setup Item	Selectable Range or Selections	Default Value	Setting
Action of Function > AlarmACK	Free/Lock	Free	
Action of Function > Message/Batch	Free/Lock	Free	
Action of Function > Math	Free/Lock	Free	
Action of Function > Data save	Free/Lock	Free	
Action of Function > E-mail/FTP	Free/Lock	Free	
Action of Function > Time set	Free/Lock	Free	
Action of Function > Display Function	Free/Lock	Free	

**Login > Basic settings**

Setup Item	Selectable Range or Selections	Default Value	Setting
<b>Without /AS1</b>			
Auto logout	Off/1min/2min/5min/10min	Off	
Operation without Login	Off/Display	Off	
<b>With /AS1<sup>*3</sup></b>			
Auto logout	Off/1min/2min/5min/10min	Off	
Operation without Login	Off/Display	Off	
User ID	Use/Not	Use	
Password retry frequency	3/5/Off	3	
Root password > Password	20 characters or less	????????	

**Login > Admin settings**

Setup Item	Selectable Range or Selections	Default Value	Setting
<b>Without /AS1</b>			
Admin number	1 to 5	1	
Mode	Off/Key/Comm/Web/Key+Comm	Off	
User name	20 characters or less	Admin1 etc.	
Password	20 <sup>*3</sup> characters or less	????????	
<b>With /AS1<sup>*3</sup></b>			
Admin number	1 to 5	1	
Mode	Off/Key/Web/Key+Comm	Off	
User name	20 characters or less	Admin1 etc.	
User ID	8 characters or less	–	
Password	20 characters or less	????????	
Password expire	Off/1month/3month/6month	Off	

## Setup Items and Default Values

### Login > User settings

Setup Item	Selectable Range or Selections	Default Value	Setting
<b>Without /AS1</b>			
User number	1 to 30	1	
Mode	Off/Key/Comm/Web/Key+Comm	Off	
User name	20 characters or less	User1 etc.	
Password	20 <sup>*3</sup> characters or less	????????	
Authority of user	Off/1/2/3/4/5/6/7/8/9/10	Off	
<b>With /AS1<sup>*3</sup></b>			
User number	1 to 90	1	
Mode	Off/Key/Comm/Web/Key+Comm	Off	
User name	20 characters or less	User1 etc.	
User ID	8 characters or less	–	
Password	20 characters or less	????????	
Password expire	Off/1month/3month/6month	Off	
Authority of user	Off/1/2/3/4/5/6/7/8/9/10	Off	

### Login > Authority of user > Key action, Media

Setup Item	Selectable Range or Selections	Default Value	Setting
<b>Without /AS1</b>			
Authority of user	1/2/3/4/5/6/7/8/9/10	1	
Key action > START	Free/Lock	Free	
Key action > STOP	Free/Lock	Free	
Key action > MENU	Free/Lock	Free	
Key action > USER	Free/Lock	Free	
Key action > DISP/ENTER	Free/Lock	Free	
Key action > FAVORITE	Free/Lock	Free	
Media/USB > External media	Free/Lock	Free	
Media/USB > Load settings <sup>*2</sup>	Free/Lock	Free	
Authority of user	1/2/3/4/5/6/7/8/9/10	1	
Action of Function > AlarmACK	Free/Lock	Free	
Action of Function > Message/Batch	Free/Lock	Free	
Action of Function > Math	Free/Lock	Free	
Action of Function > Data save	Free/Lock	Free	
Action of Function > E-mail/FTP	Free/Lock	Free	
Action of Function > Time set	Free/Lock	Free	
Action of Function > Display Function	Free/Lock	Free	
<b>With /AS1<sup>*3</sup></b>			
The Authority of user, Key action, and Media/USB items are the same as on a DX without the /AS1 option.			
Actions > AlarmACK	Free/Lock	Free	
Actions > Message/Batch	Free/Lock	Free	
Actions > Math	Free/Lock	Free	
Actions > Data save	Free/Lock	Free	
Actions > E-mail/FTP	Free/Lock	Free	
Actions > Time set	Free/Lock	Free	
Actions > Display Function	Free/Lock	Free	
Action > Calibration	Free/Lock	Free	
Sign record > Signature1	Free/Lock	Free	
Sign record > Signature2	Free/Lock	Free	
Sign record > Signature3	Free/Lock	Free	

**Report > Basic settings**

Setup Item	Selectable Range or Selections	Default Value	Setting
Report kind	Off/Hour/Day/Hour+Day/Day+Week/Day+Month	Off	
Date	1 to 28	1	
Day of the week (Day+week)	SUN/MON/TUE/WED/THU/FRI/SAT	SUN	
Time (hour)	0 to 23	0:00	

**Report > Report settings**

Setup Item	Selectable Range or Selections	Default Value	Setting
Report channel number	R01/R02/R03/.../R23/R24	R01	
On/Off	On/Off	Depends on the model	
Channel	Channel number	001 etc.	
Sum scale	Off, /s, /min, /h, /day	/s	

**Time settings**

Setup Item	Selectable Range or Selections	Default Value	Setting
Time zone (HHMM)	-1300 to 1300	900	
Time deviation limit	Off/10s/20s/30s/1min/2min/3min/4min/5min	30s	
Date format	Y/M/D, M/D/Y, D/M/Y, D.M.Y	Y/M/D	
Calendar display > 1st weekday <sup>**2</sup>	SUN/MON	MON	

## Setup Items and Default Values

### Communication (Ethernet) > IP-address

Setup Item	Selectable Range or Selections	Default Value	Setting
DHCP	Use/Not	Not	
DNS accession	Use/Not	Use	
Host-name register	Use/Not	Use	
Fixed IP-address > IP-address	0.0.0.0 to 255.255.255.255	0.0.0.0	
Fixed IP-address > Subnet mask	0.0.0.0 to 255.255.255.255	0.0.0.0	
Fixed IP-address > Default gateway	0.0.0.0 to 255.255.255.255	0.0.0.0	

### Communication (Ethernet) > Host settings

Setup Item	Selectable Range or Selections	Default Value	Setting
Host name	64 characters or less	–	
Domain name	64 characters or less	–	

### Communication (Ethernet) > DNS settings

Setup Item	Selectable Range or Selections	Default Value	Setting
Server search order > Primary	0.0.0.0 to 255.255.255.255	0.0.0.0	
Server search order > Secondary	0.0.0.0 to 255.255.255.255	0.0.0.0	
Domain suffix search order > Primary	64 characters or less	–	
Domain suffix search order > Secondary	64 characters or less	–	

### Communication (Ethernet) > Keep alive, Timeout

Setup Item	Selectable Range or Selections	Default Value	Setting
Keep alive	On/Off	On	
Application time out > On/Off	On/Off	Off	
Application time out > Time	1 to 120 (min)	1	

### Communication(Ethernet) > Server > Server modes

Setup Item	Selectable Range or Selections	Default Value	Setting
FTP	Use/Not	Use <sup>*2</sup>	
Web	Use/Not	Use <sup>*1</sup>	
SNTP	Use/Not	Not	
Modbus	Use/Not	Not	
EtherNet/IP <sup>*2</sup>	Use/Not	Not	

### Communication(Ethernet) > Server > Allowed Modbus clients<sup>\*2</sup>

Setup Item	Selectable Range or Selections	Default Value	Setting
Use/Not	Use/Not	Not	
Client number	1/2/3/4/5/6/7/8/9/10	1	
On/Off	On/Off	Off	

**Communication (Ethernet) > Web page**

Setup Item	Selectable Range or Selections	Default Value	Setting
<b>Without /AS1</b>			
Page type	Operator/Monitor	Operator	
Page type=Operator			
Web page > On/Off	On/Off	Off	
Web page > Access control	Off/Admin	Off	
Web page > Command	Use/Not	Not	
Page type=Monitor			
Web page > On/Off	On/Off	Off	
Web page > Access control	Off/Admin/User	Off	
<b>With /AS1<sup>*3</sup></b>			
Page type	Operator/Monitor	Operator	
Page type=Operator			
Web page > On/Off	On/Off	Off	
Web page > Access control	Off/Admin	Off	
The items when Page type is set to Monitor are the same as on a DX without the /AS1 option.			

**Communication (Ethernet) > E-Mail > Basic settings**

Setup Item	Selectable Range or Selections	Default Value	Setting
SMTP server name	64 characters or less	—	
Port number	0 to 65535	25	
Security <sup>*2</sup>	Off/PbS <sup>*2</sup> /Auth <sup>*3</sup>	Off	
SMTP authorization > User name (when Auth is selected) <sup>*3</sup>	32 characters or less	—	
SMTP authorization > Password (when Auth is selected) <sup>*3</sup>	32 characters or less	—	

**Communication (Ethernet) > E-Mail > Recipients**

Setup Item	Selectable Range or Selections	Default Value	Setting
Recipient 1	150 characters or less	—	
Recipient 2	150 characters or less	—	
Sender	64 characters or less	—	

**Communication (Ethernet) > E-Mail > POP3 settings<sup>\*2</sup>**

Setup Item	Selectable Range or Selections	Default Value	Setting
POP3 Server name	64 characters or less	—	
Port number	0 to 65535	110	
Login name	32 characters or less	—	
Password	32 characters or less	***** ... ***	

**Communication (Ethernet) > E-Mail > Alarm settings**

Setup Item	Selectable Range or Selections	Default Value	Setting
Recipient 1	On/Off	Off	
Recipient 2	On/Off	Off	
Active Alarms > Alarm 1	On/Off	Off	
Active Alarms > Alarm 2	On/Off	Off	
Active Alarms > Alarm 3	On/Off	Off	
Active Alarms > Alarm 4	On/Off	Off	
Include INST	On/Off	Off	
Include source URL	On/Off	Off	
Subject	32 characters or less	Alarm_summary	
Header 1	64 characters or less	—	
Header 2	64 characters or less	—	
Send alarm action <sup>*2</sup>	On+Off/On	On+Off	
Include tag/ch in Subject <sup>*2</sup>	On/Off	Off	

**Communication (Ethernet) > E-Mail > Scheduled settings**

Setup Item	Selectable Range or Selections	Default Value	Setting
Recipient 1	On/Off	Off	
Interval	1h/2h/3h/4h/6h/8h/12h/24h	24h	
Ref.time	00:00 to 23:59	00:00	
Recipient 2	On/Off	Off	
Interval	1h/2h/3h/4h/6h/8h/12h/24h	24h	
Ref.time	00:00 to 23:59	00:00	
Include INST	On/Off	Off	
Include source URL	On/Off	Off	
Subject	32 characters or less	Periodic_data	
Header 1	64 characters or less	—	
Header 2	64 characters or less	—	

**Communication (Ethernet) > E-Mail > System settings**

Setup Item	Selectable Range or Selections	Default Value	Setting
Recipient 1	On/Off	Off	
Recipient 2	On/Off	Off	
Include source URL	On/Off	Off	
Subject	32 characters or less	System_warning	
Header 1	64 characters or less	—	
Header 2	64 characters or less	—	

**Communication (Ethernet) > E-Mail > Report settings**

Setup Item	Selectable Range or Selections	Default Value	Setting
Recipient 1	On/Off	Off	
Recipient 2	On/Off	Off	
Include source URL	On/Off	Off	
Subject	32 characters or less	Report_data	
Header 1	64 characters or less	—	
Header 2	64 characters or less	—	

**Communication (Ethernet) > FTP client > FTP transfer file**

Setup Item	Selectable Range or Selections	Default Value	Setting
<b>Without /AS1</b>			
FTP transfer file > Disp&Event data	On/Off	Off	
FTP transfer file > Report	On/Off	Off	
FTP transfer file > Snapshot	On/Off	Off	
Transfer wait time > Disp&Event data <sup>*2</sup>	0 to 120 min	0	
Transfer wait time > Report <sup>*2</sup>	0 to 120 min	0	
<b>With /AS1<sup>*3</sup></b>			
FTP transfer file > Disp&Event data	On/Off	Off	
FTP transfer file > Report	On/Off	Off	
FTP transfer file > Snapshot	On/Off	Off	
FTP transfer file > Setting	On/Off	Off	
The Transfer wait time items are the same as on a DX without the /AS1 option.			



**Communication (Ethernet) > FTP client > FTP connection**

Setup Item	Selectable Range or Selections	Default Value	Setting
FTP connection	Primary/Secondary	Primary	
FTP server name	64 characters or less	—	
Port number	0 to 65535	21	
Login name	32 characters or less	—	
Password	32 characters or less	***** ...	
Account	32 characters or less	—	
PASV mode	On/Off	Off	
Initial path	64 characters or less	—	

**Communication (Ethernet) > SFTP client**

Setup Item	Selectable Range or Selections	Default Value	Setting
Use/Not	Use/Not	Not	
Server name	64 characters or less	—	
Port number	0 to 65535	123	
Access interval	Off/1h/8h/12h/24h	8h	
Access reference time	00:00 to 23:59	00:00	
Access timeout	10s/30s/90s	30s	
Time adjust on Start action	On/Off	Off	

**Communication (Ethernet) > Modbus client > Basic settings**

Setup Item	Selectable Range or Selections	Default Value	Setting
Read cycle	125ms/250ms/500ms/1s/2s/5s/10s	1s	
Retry interval	Off/10s/20s/30s/1min/2min/5min/10min/20min/30min/1h	2min	

**Communication (Ethernet) > Modbus client > Modbus server settings**

Setup Item	Selectable Range or Selections	Default Value	Setting
Server number	1-8/9-16	1-8	
Port	0 to 65535	502	
Modbus server name	64 characters or less	—	
Unit	Auto/Fixed	Auto	
No.	0 to 255	1	

**Communication (Ethernet) > Modbus client > Command settings**

Setup Item	Selectable Range or Selections	Default Value	Setting
Client command number	1-8/9-16	1-8	
1 to 16	Off/R/R-M/W/W-M/E-M <sup>*3</sup>	Off	
First	Depends on the command type.	—	
Last	Depends on the command type.	—	
Server	1/2/3/.../15/16	1	
Regi.	Numerical value	30001	
Type	INT16/UINT16/INT32_B/INT32_L/UINT32_B/UINT32_L/FLOAT_B/FLOAT_L	INT16	

**Communication (Ethernet) > Password management > KDC connection (/AS1 option)<sup>\*3</sup>**

Setup Item	Selectable Range or Selections	Default Value	Setting
KDC connection	Primary/Secondary	Primary	
KDC server name	64 characters or less	—	
Port number	0 to 65535	88	

## Setup Items and Default Values

### Communication (Ethernet) > Password management > Certification key (/AS1 option)<sup>\*3</sup>

Setup Item	Selectable Range or Selections	Default Value	Setting
Host principal	20 characters or less	—	
Realm name	64 characters or less	—	
Password	20 characters or less	—	
Encryption	AES128/AES256/ARC4	AES128	

### Communication (Serial) > Basic settings

Setup Item	Selectable Range or Selections	Default Value	Setting
<b>Without /AS1</b>			
Baud rate	1200/2400/4800/9600/19200/38400	9600	
Data length	7/8	8	
Parity	Odd/Even/None	Even	
Handshaking	Off:Off/XON:XON/XON:RS/CS:RS	Off:Off	
Address	1 to 99	1	
Protocol	Normal/Modbus/Modbus-M	Normal	
<b>With /AS1<sup>*3</sup></b>			
The baud rate, data length, parity, handshaking, address items are the same as on a DX without the /AS1 option.			
Protocol	Normal/Modbus/Modbus-M/Barcode	Normal	

### Communication (Serial) > Modbus master > Basic settings

Setup Item	Selectable Range or Selections	Default Value	Setting
Read cycle	125ms/250ms/500ms/1s/2s/5s/10s	1s	
Timeout	125ms/250ms/500ms/1s/2s/5s/10s/1min	1s	
Retrials	Off/1/2/3/4/5/10/20	1	
Inter-block delay	Off/5ms/10ms/15ms/45ms/100ms	Off	
Auto recovery	Off/1min/2min/5min/10min/20min/30min/1h	2min	

### Communication (Serial) > Modbus master > Command settings

Setup Item	Selectable Range or Selections	Default Value	Setting
Master command number	1-8/9-16	1-8	
1 to 16	Off/R/R-M/W/W-M <sup>*3</sup>	Off	
First	Depends on the command type.	—	
Last	Depends on the command type.	—	
Addr.	1 to 247	1	
Regi.	Numerical value	30001	
Type	INT16/UINT16/INT32_B/INT32_L/UINT32_B/ UINT32_L/FLOAT_B/FLOAT_L	INT16	

### Communication (PROFIBUS-DP)<sup>\*2</sup>

Setup Item	Selectable Range or Selections	Default Value	Setting
Node Address	0 to 125	3	

**Status relay**<sup>\*3</sup>

Setup Item	Selectable Range or Selections	Default Value	Setting
<b>Without /AS1</b>			
Fail relay	Fail/Status relay	Fail	
Status relay	Fail/Status relay	Status relay	
<b>With /AS1</b>			
Fail relay	Fail/Status relay/Mem. sample/Invalid user/Login	Fail	
Status relay	Fail/Status relay/Mem. sample/Invalid user/Login	Status relay	

**Status Relay > Status Relay Details**<sup>\*3</sup>

Setup Item	Selectable Range or Selections	Default Value	Setting
Memory/Media status	On/Off	Off	
Measurement error	On/Off	Off	
Communication error	On/Off	Off	
Memory stop	On/Off	Off	
Alarm <sup>*2</sup>	On/Off	Off	

**Set Calibration**<sup>\*3</sup>

Setup Item	Selectable Range or Selections	Default Value	Setting
Use/Not	Use/Not	Not	
Notification	1 to 10	1	
Renotification	10min/30min/1h/8h/24h	1h	

**End**

Setup Item	Selectable Range or Selections	Default Value	Setting
Do you want to store and make the new settings take effect?	Yes/No/Cancel	—	

## File/Initialize tab<sup>\*2</sup>

### Load settings

Setup Item	Selectable Range or Selections	Default Value	Setting
<b>Without /AS1</b>			
Load settings > Kind	CF/USB	CF	
Initialize > Kind	Clear 1/Clear 2/Clear 3	Clear 3	
Media eject	CF/USB	–	
<b>With /AS1<sup>*3</sup></b>			
Load settings > All settings > Kind	CF/USB	CF	
Load settings > Login info only > Kind	CF/USB	CF	
Load settings > Other settings > Kind	CF/USB	CF	
Initialize > Kind	Clear 1/Clear 2/Clear 3/Clear 4	Clear 3	
Media eject	CF/USB	–	

### End

Setup Item	Selectable Range or Selections	Default Value	Setting
Do you want to store and make the new settings take effect?	Yes/No/Cancel	–	