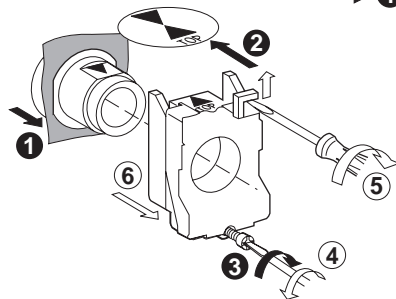


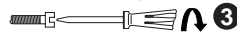


65013-037-26
2/00
Raleigh, NC, USA

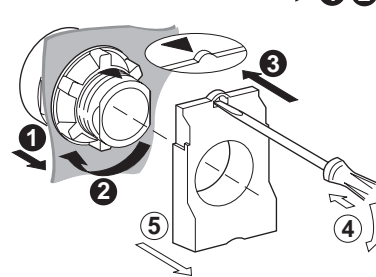
XB4-B**
ZB4-B**



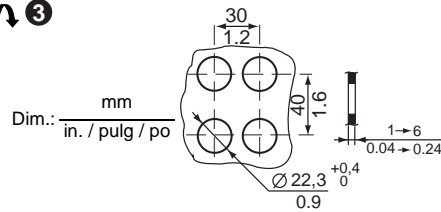
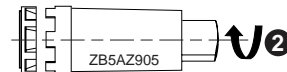
0,8 N•m MAX.
7.0 lb-in / lb-pulg / lb-po MAX.



XB5-A**
ZB5-A**



2,0 N•m MAX.
17.7 lb-in / lb-pulg / lb-po MAX.



For use on a flat surface of enclosure Type 1, 2, 3, 4, 4X, 12, & 13
(Exception: Double Headed Push Button)

Para utilizar sobre una superficie plana de gabinete tipo 1, 2, 3, 4, 4X, 12 & 13
(Excepción: Boton pulsador double)

Pour utilisation sur une surface plate des armoires de type 1, 2, 3, 4, 4X, 12 & 13
(Exception: Bouton-poussoir à double touche)

