

B10 Series Electric Thermostat



The model B10 is a direct acting, single-pole, slow make and break type thermostat.

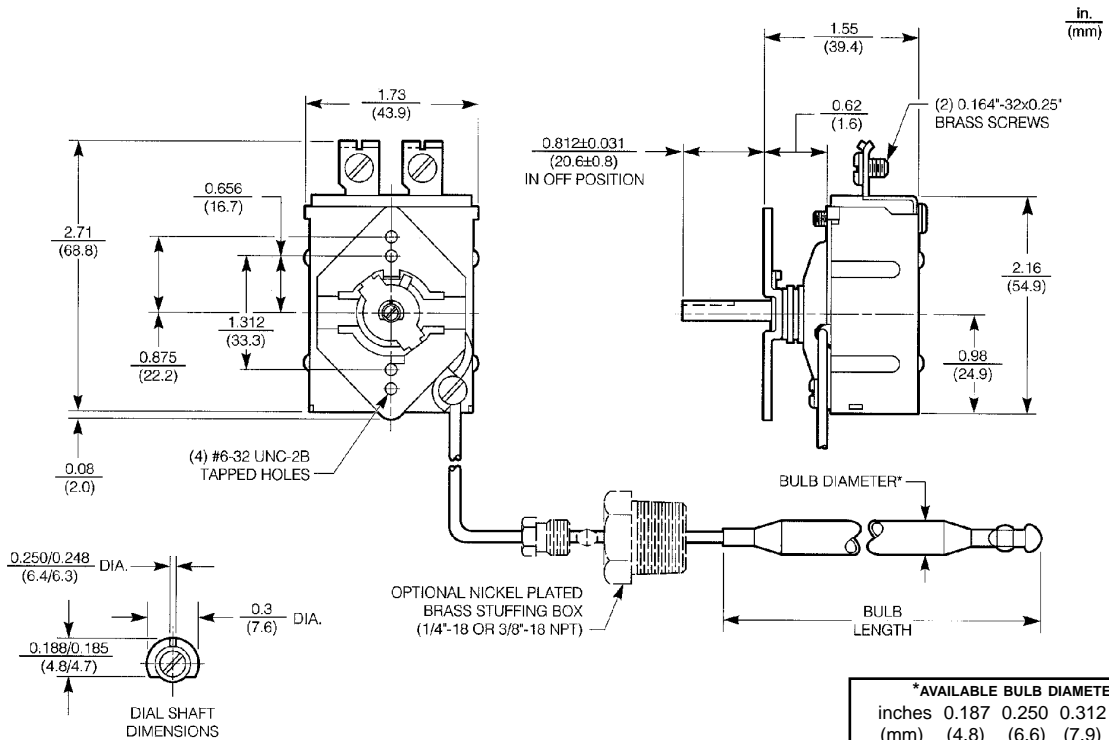
Typical applications are in incubators, laboratory ovens, water baths, sterilizers, dishwashers, steam tables, scalding tanks, and other equipment where a close differential is required.

Design Features

- Temperature ranges to 550°F (288°C)
- Single pole, slow make and break design
- Very sensitive to temperature change
- Small temperature differential between make and break
- Fine silver contacts to assure consistent switch action and long life
- Rugged and compact design for versatility of application
- Bulb and capillary available in copper, nickel plated copper, nickel plated steel, or stainless steel
- Plastic coating available to protect against moisture, dust, etc.

Specifications

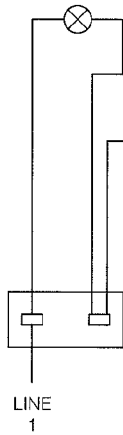
- Ambient temperature:
32°F (0°C) to 150°F (66°C)
- Electrical Rating:
20 Amps @ 125 VAC
15 Amps @ 250 VAC
125 VA PD @ 125 VAC
- Agency Certification Numbers:
UL Guide No. XAPX2
UL File No. E12103
CSA File No. LR36461



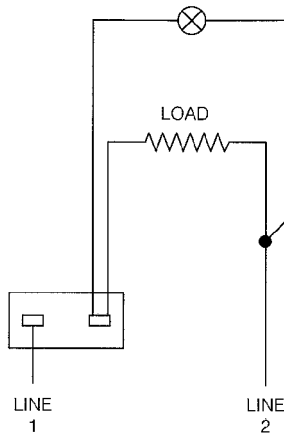
*AVAILABLE BULB DIAMETERS				
inches	0.187	0.250	0.312	0.375
(mm)	(4.8)	(6.6)	(7.9)	(9.5)
AVAILABLE CAPILLARY LENGTHS				
24 to 120 in 12" increments				
(609.6 to 3048 in 304.8mm increments)				

Wiring Diagrams

PILOT LIGHT (OPTIONAL)
IS ON WHEN THERMOSTAT
SWITCH IS OFF



PILOT LIGHT (OPTIONAL)
IS OFF WHEN THERMOSTAT
SWITCH IS OFF



Application Responsibility

Invensys Appliance Controls, as a supplier, will comply with those agreed to drawing requirements and specifications that define this product. Suitability for any application is the responsibility of the purchaser.