



QUICK INSTALLATION GUIDE (For more details reference Installation Instruction Sheet 42052-116-01)

(Cat 1494V-DS30, 1494V-DSX30, 1494V-DS60, 1494V-DSX60, 1494V-DS100, 1494V-DSX100 --Series D)



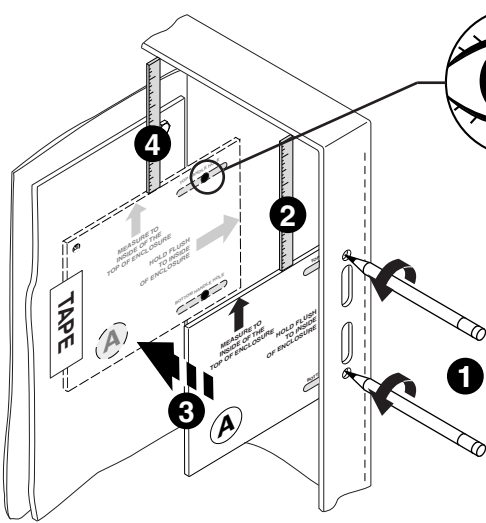
ATTENTION: To prevent electrical shock, disconnect from power source before installing or servicing. Follow NFPA 70E requirements. Install in suitable enclosure. Keep free from contaminants.

1 Disconnect Switch Installation (Right hand installation shown. For left hand installation follow similar procedure.)

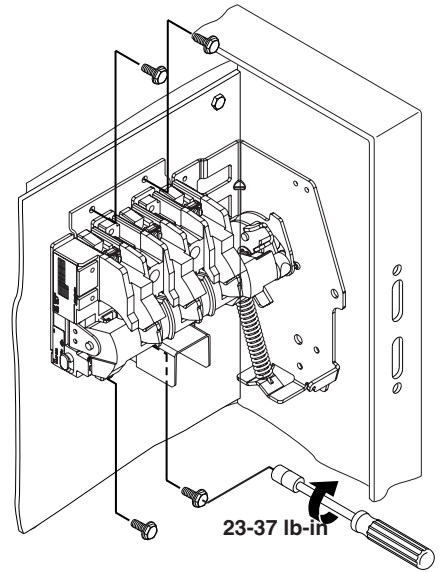
Use template (A) to locate handle holes on mounting plate.

5 Overlay template "B" over "A".

7 Mount disconnect switch.



6 Center punch and drill (4) 11/64" holes for thread forming (TAP-TITE) screws provided with switch.

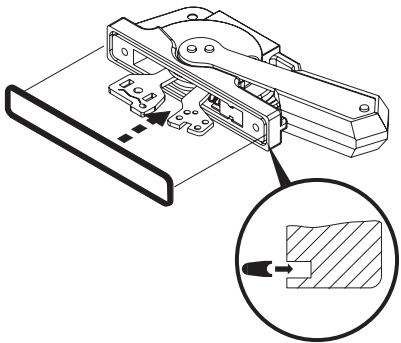


2 Disconnect Handle Installation

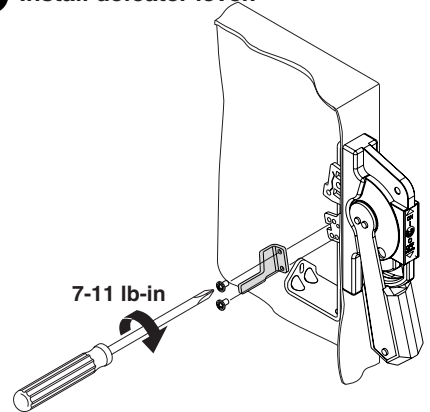
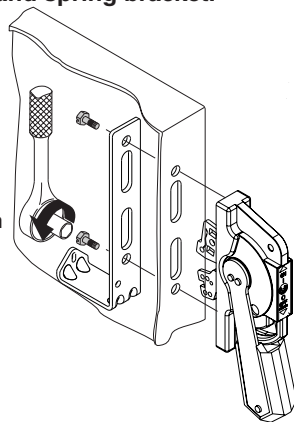
1 Install gasket.

2 Install handle and spring bracket.

3 Install defeater lever.



30-40 lb-in

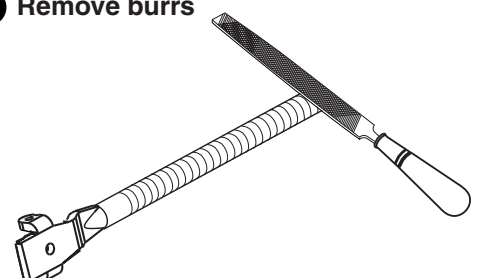
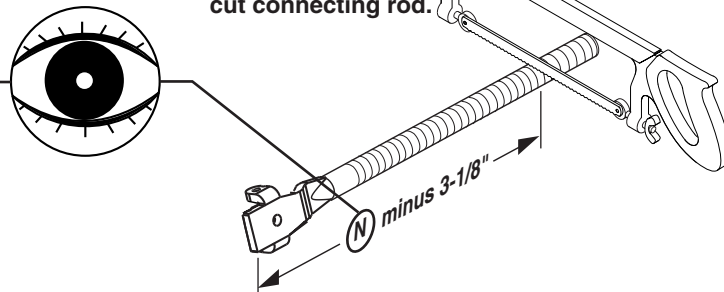
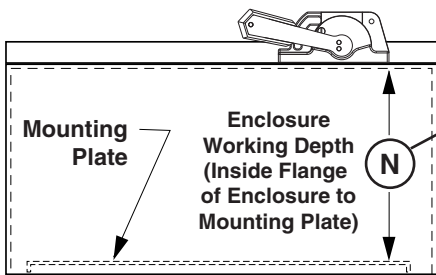


3 Cutting Connecting Rod

1 Measure working depth of enclosure.

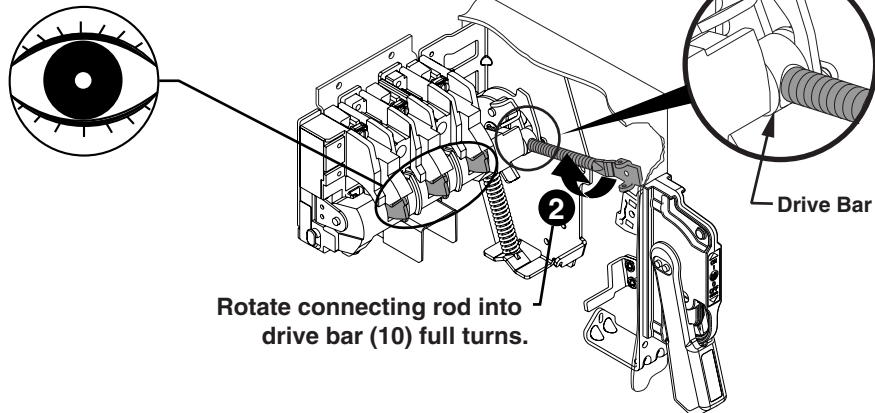
2 Measure, mark and cut connecting rod.

3 Remove burrs

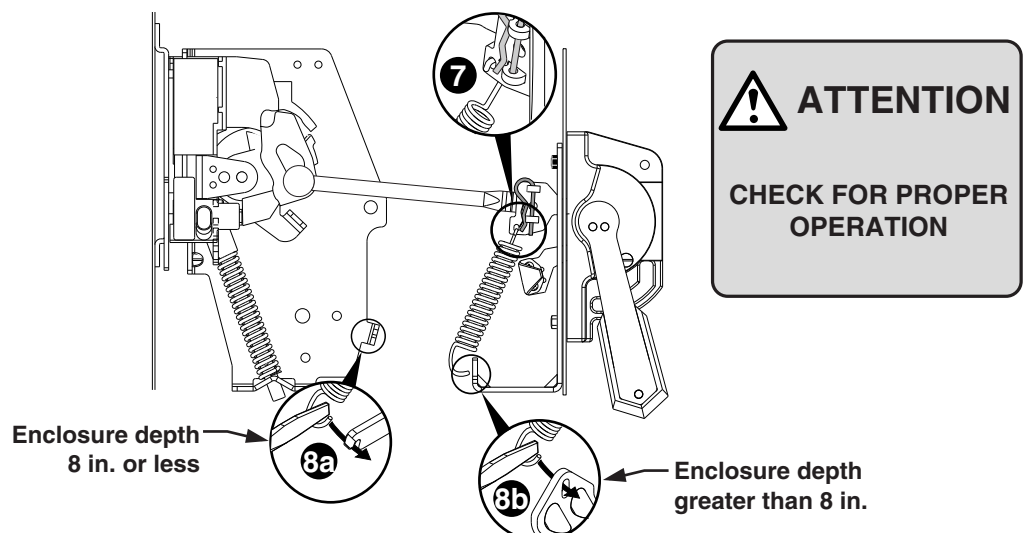
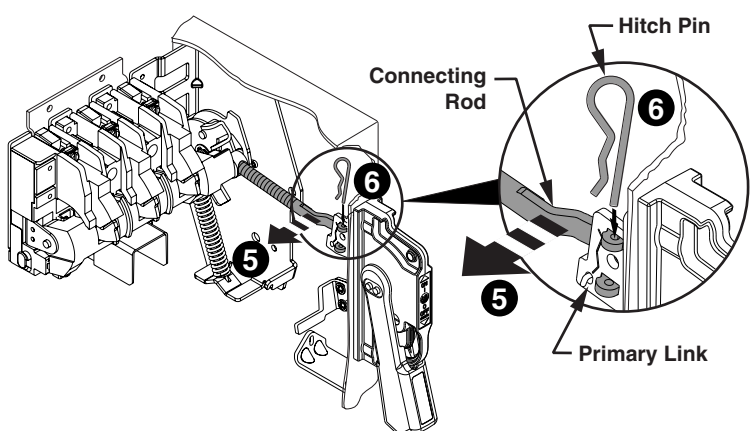
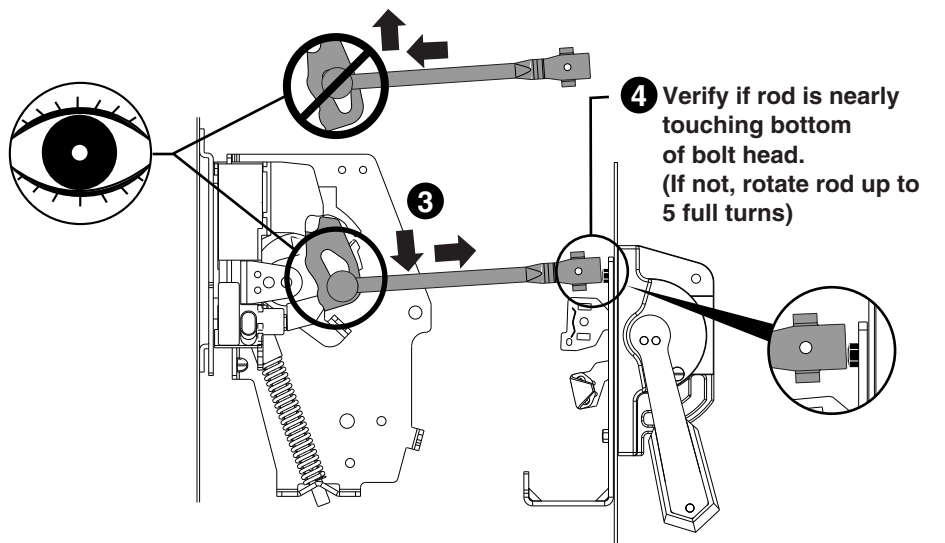


4 Connecting Rod Installation

1 Verify that disconnect switch and handle are in "OFF" position. (Switch blades will be visible)



Rotate connecting rod into drive bar (10) full turns.



ATTENTION

CHECK FOR PROPER OPERATION

5 Trailer Fuse Block Installation

Go to Installation Instruction Sheet 42052-116-01.